

Welcome to the Benefice of Eden Bridge





Contents

3. Welcome to our benefice
5. The person we are looking for
6. What we can offer
7. Our schools
8. Serving our communities
10. Our sister benefice of Cross Fell
11. Our Mission Community
12. Our parishes
13. Our finances
14. The Rectory, Kirkoswald
15. Thank you for reading our profile

Welcome to our benefice

Welcome to the Benefice of Eden Bridge – unashamedly rural, but not stuck in the mud!

Our benefice consists of four parishes: Lazonby, Great Salkeld, Kirkoswald and Renwick with Croglin in the beautiful Eden Valley. We want to work together under the leadership of our new Rector as we seek to follow Jesus and serve our communities.

The PCCs meet together twice a year in addition to individual meetings as needed.

We enjoy variety and our worship ranges from Holy Communion (Common Worship and BCP), Morning Worship and BCP Evening Prayer to informal All Age worship and café church. We hope our new priests will help us explore new ways of worshipping while also continuing to sustain cherished traditions.

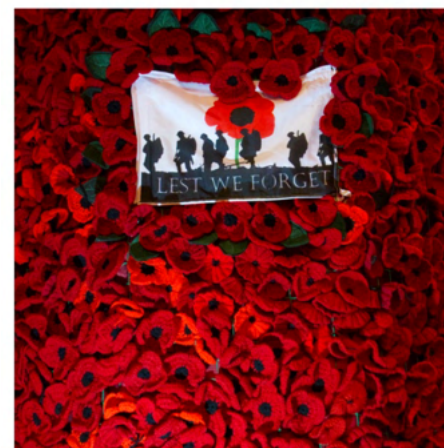


Welcome to our benefice

Beyond the church walls we work closely with our sister benefice of Cross Fell and with Methodist friends to serve the people in our local area. We have good links with our Church of England primary schools: ministers lead collective worship, churches host school services and church members are valued governors and volunteers in the schools. We would like our new priest to build on these foundations and strengthen our ties with young families.

Lay ministry is a vital part of our worship and wider church life and we hope our new incumbent will encourage and enable people to develop their gifts as we all work together.

Eden Bridge benefice offers an exciting opportunity for a prayerful and enthusiastic priest who loves rural ministry, rejoices in the breadth of the Church of England and longs to work collaboratively with God's people to build God's kingdom here in the Eden valley.



The person we are looking for

Rector of the Benefice of Eden Bridge, 0.75 FTE post resident in Kirkoswald Rectory. Your focus will be on Eden Bridge, but you will also work collegially with clergy and laity in Cross Fell.

(For full details, please refer to Role Description)

We hope our new priest will:

- Be a spiritual leader of our benefice.
- Prayerful and theologically grounded
- At ease in Anglican sacramental worship
- Support and grow lay leadership
- Collaborative, resilient and realistic
- Able to lead through change with clarity and care
- Committed to rural ministry and local communities.



What we can offer

A strong collaborative ministry team including:

Revd Becky Richards, Associate Priest and Anglican Mission Community Leader.

Retired priest with PTO, Revd Fiona Jenkins, Ordinand Kevin Turpin, Licensed Lay Readers Julie Barrett and Bryan Gray and a great team of local lay leaders of worship.

Methodist Mission Community colleagues Rev David Newlove, Rev Ros Watson and Pastors Dean Lawson and Celia Ramnath.

Administrative support Our Benefices Administrator supports parish clergy in both Eden Bridge and Cross Fell.

Pastoral Visiting team: The team of Wendy Wilson, Cindy Butterworth, Julie Barrett, Cilla Weir and Kevin Turpin offer regular visits to older people in their own homes or support via telephone chats.

Enthusiastic and engaged laity: Members lead All Age worship and after school clubs; enable services to run smoothly; run prayer groups, social events and fellowship lunches; organize fund raising; volunteer in local schools and clubs and much, much more.

Open the Book team: Our Open the Book team was launched in February 2025. We currently visit Lazonby, Kirkoswald and Langwathby schools once a fortnight.

Our schools

We enjoy excellent relationships with the two Church of England primary schools in the benefice. They are:

- Lazonby 100 pupils
- Kirkoswald 63 pupils

The schools welcome ministers and our Open the Book team to lead collective worship.

The churches enjoy hosting services for schools at occasions such as Leavers, Christmas, Easter & Harvest.



Serving our communities

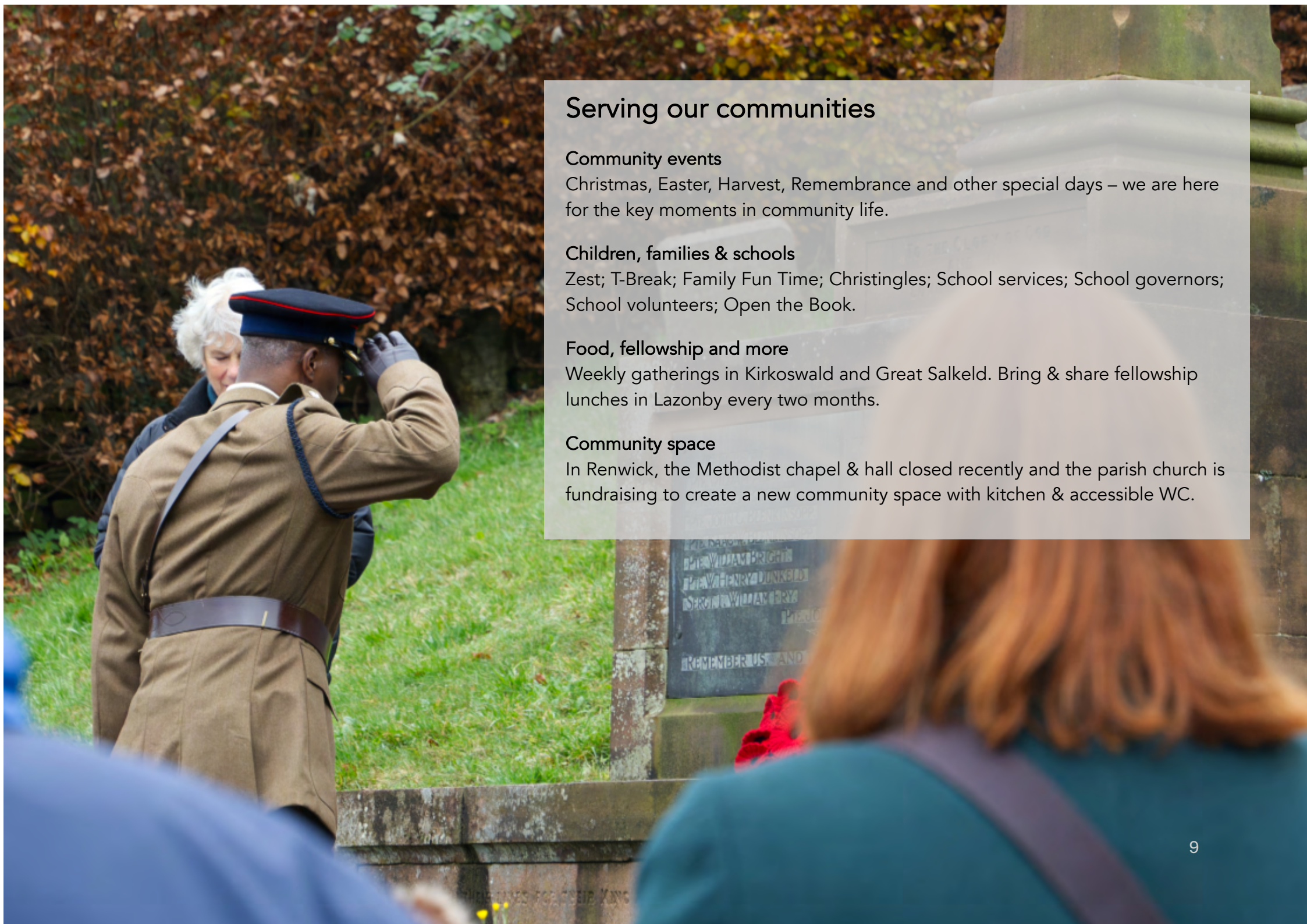
Life events

We are here for people in all the joys and sorrows of life.

Numbers fluctuate from year to year, the 2025 figures for occasional offices are

	Baptisms	Weddings	Funerals
Lazonby	4	2	2
Great Salkeld	1	0	5
Kirkoswald	2	1	2
Renwick	2	1	1





Serving our communities

Community events

Christmas, Easter, Harvest, Remembrance and other special days – we are here for the key moments in community life.

Children, families & schools

Zest; T-Break; Family Fun Time; Christingles; School services; School governors; School volunteers; Open the Book.

Food, fellowship and more

Weekly gatherings in Kirkoswald and Great Salkeld. Bring & share fellowship lunches in Lazonby every two months.

Community space

In Renwick, the Methodist chapel & hall closed recently and the parish church is fundraising to create a new community space with kitchen & accessible WC.

Our sister benefice of Cross Fell

The Benefice of Cross Fell consists of eight parishes: Addingham, Culgaith, Edenhall, Langwathby, Kirkland, Melmerby, Ousby and Skirwith. The parishes serve the villages and hamlets at the foot of Cross Fell in the beautiful Eden Valley.

Eden Bridge and Cross Fell benefices work together with each other and Methodist congregations in the East of Eden Mission Community to serve the people in our local area.

There are good links with Church of England primary schools in Langwathby and Culgaith. The schools welcome ministers and our Open The Book team to collective worship and churches enjoy hosting services for schools at occasions during the year. Some parishes have EcoChurch or similar projects, the image on pg 3 shows volunteers hay-raking in Addingham churchyard.

The Cross Fell PCCs are exploring governance changes to create a more coherent and sustainable structure for ministry and mission. The benefice is currently seeking to appoint a Priest in Charge 0.25 FTE to lead the necessary governance changes. This post could potentially be combined with the 0.75 Rector of Eden Bridge to create a full time post.



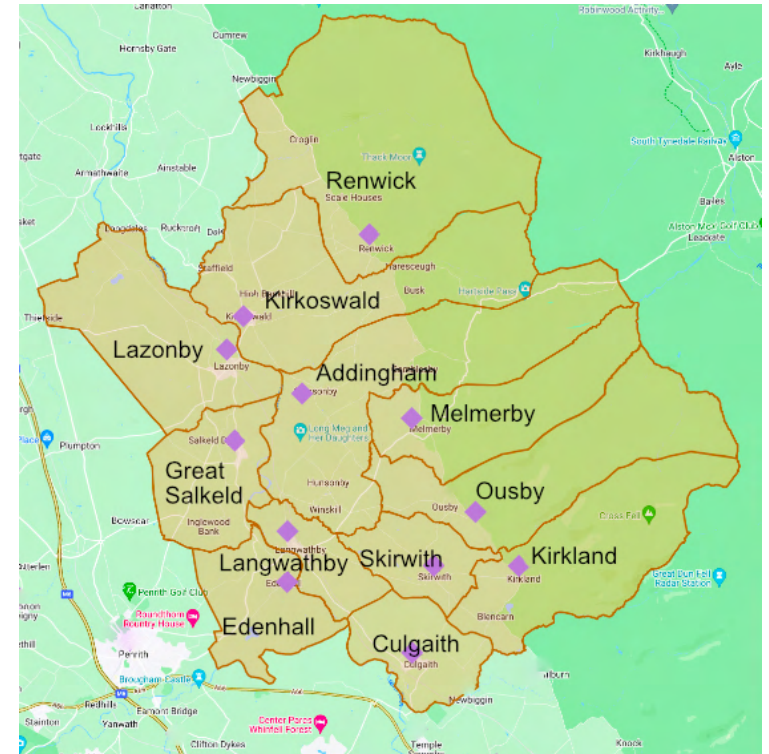
Our Mission Community

Cumbria is England's first ecumenical county, in which four partner denominations (Anglicans, Methodists, United Reformed Church and the Salvation Army) have covenanted to work together.

In 2015, the God for All vision was launched, underpinned by a commitment across denominations in Cumbria to grow God's Kingdom through the development of Mission Communities. The vision has four central themes: Follow Daily, Speak Boldly, Care Deeply and Tread Gently.

The East of Eden Mission Community includes the Eden Bridge benefice and the Cross Fell benefice, together with the Methodist chapels of Kirkoswald, Langwathby, Gamblesby and Alston.

We are committed to sharing ministry and mission together. Kirkoswald and Langwathby have ecumenical congregations which alternate worship between church and chapel. We have an ecumenical group to support and resource Leaders of Worship group. Our Quiet Days and the Open the Book team are also ecumenical ventures.



Our parishes - Benefice of Kirkoswald, Renwick with Croglin, Lazonby and Great Salkeld

St Nicholas, Lazonby	St Cuthbert, Great Salkeld	St Oswald's, Kirkoswald	All Saints, Renwick with Croglin
			
<p>Population 1061. We seek to follow and serve Jesus in our community. Our well-maintained church building has flexible space, a disabled toilet and a servery. These allow us to run family-friendly events such as our innovative, all-age 'Zest' service monthly, and a fortnightly 'T-Break' after school family club. Worshippers experience a variety of Sunday service styles- with 2 per month being lay-led. Also important is a monthly, weekday communion service at nearby housing for the over 50's. We meet regularly in someone's home for bible study, prayer and fellowship. We have excellent links with our local primary school (3 church members are governors) in our thriving, village of Lazonby.</p>	<p>Population 467. Our well maintained 11th century church is set in the heart of the village in beautiful surroundings. We are open 24/7 offering a friendly welcome to all, a toilet, kitchenette and WiFi. Our churchwardens, PCC and enthusiastic congregation are committed to support our ministry and maintain this beautiful historic building. Great Salkeld is a small village of mainly older or retired people but there are a few young families. The village hall is a popular venue for activities ranging from keep fit, yoga, Playgroup and music evenings, and a community run coffee morning every Tuesday. We also have a popular village pub which serves excellent food.</p>	<p>Population 716. Well maintained old building with seating capacity for 250. Strong connection with local C of E Primary School – the deputy head is our organist. Separate bell tower at the top of the hill overlooking the Church. Prior to the Reformation the "College" adjacent to the Church was a seminary training priests. The village has a community shop, a surgery with a dispensary a pub serving excellent food and the primary school. The Church Institute in the village square is now the village hall. The village has a strong sense of community with cricket and football teams both highly placed in their respective leagues.</p>	<p>Population 278. Renwick and Croglin are two small working villages in the foothills of the Pennines AONB. Our church is a small, friendly, welcoming place. We see our work as serving the local community, who, in turn, are supportive of our work. We have strong links to the other parishes in the Benefice despite being the most isolated. The congregation is mostly elderly but occasionally boosted by local children and their parents. All Saints has a long history of ecumenical cooperation with our Methodist friends in Renwick. We have an active PCC with many talented people prepared to put time and effort into the work of the Church.</p>

Our finances – information from 2025 accounts

	Eden Bridge Group			
	Lazonby	Great Salkeld	Kirkoswald	Renwick
Year	2025	2025	2025	2025
Total income	38,911	23,771	19,815	28,019
<i>Ministry contribution</i>	<i>22,770</i>	<i>11,300</i>	<i>12,000</i>	<i>8561</i>
<i>All other outgoings</i>	<i>28,462</i>	<i>21,684</i>	<i>7,673</i>	<i>5,484</i>
Total expenditure	51,232	32,984	19,673	14,045
Balance sheet assets	162,242	80,045	28,605	76,729
	<i>Inc. £130k restricted legacy</i>			<i>Inc. £43,374 in re-ordering fund.</i>

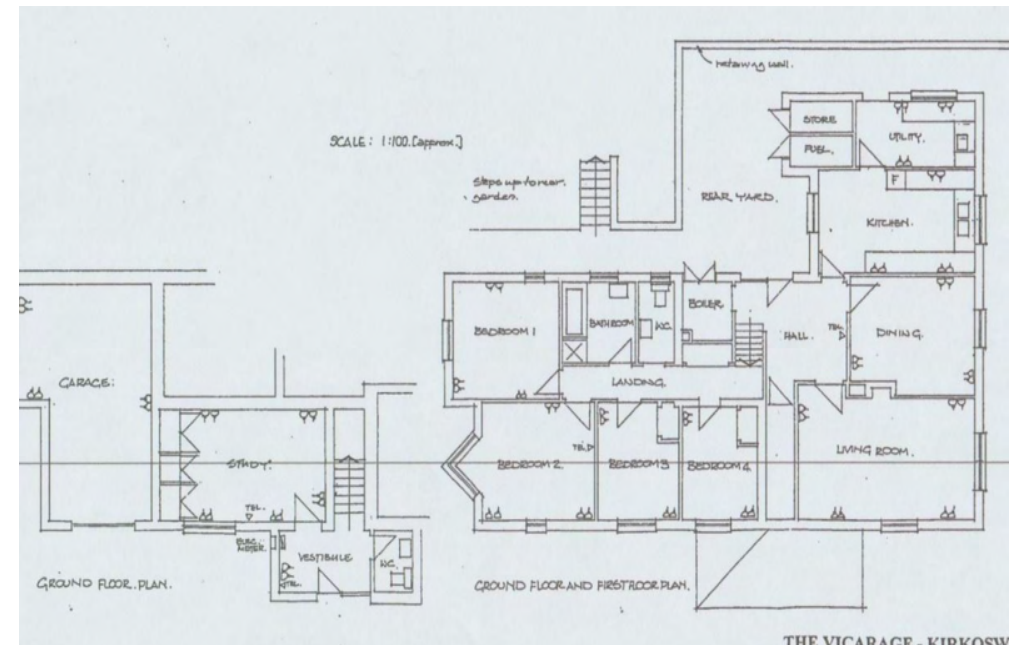
The Vicarage, Kirkoswald

Kirkoswald Vicarage was purpose built in the late 1980s.

It has 4 bedrooms and benefits from a large garden with open views across fields to one side.

A new efficient heating system has been installed with solar panels and batteries to make an economical and eco-friendly home.

It is positioned in a quiet cul de sac off the village square, only a short walk from the shop, pubs and doctor's surgery.





Thank you for reading our profile

For more information please contact:

The Ven Ruth Newton
Archdeacon of Carlisle

Email: archdeacon.north@carlisediocese.org.uk

Telephone: 07919 792051

Next step