

Maryport Team Ministry

Benefice of Maryport, Netherton, Flimby and Broughton Moor



A Message from the Bishop of Carlisle



Thank you for your interest in this exciting role in the Diocese of Carlisle. The Diocese of Carlisle is committed to the God for All vision. Launched in 2015, it is underpinned by a commitment across four denominations in Cumbria (the Church of England, Methodist Church, The Salvation Army and the URC) to see God's Kingdom flourish across the county. The vision is based on four values:

- **Follow Daily** (helping each other to follow Jesus more closely)
- **Care Deeply** (serving our communities and challenging injustice)
- **Speak Boldly** (sharing our faith in Jesus in everyday ways)
- **Tread Gently** (seeking to sustain and renew the life of the earth)

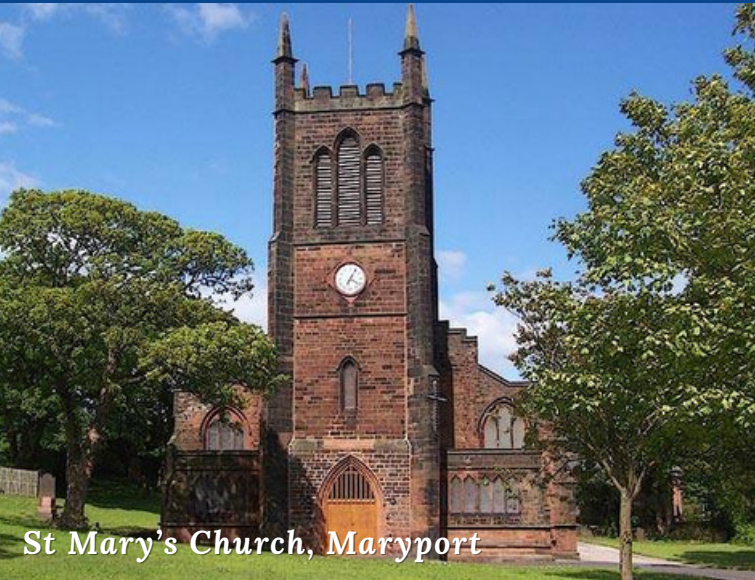
Mission Communities are the way in which the Church in Cumbria seeks to live out the God for All vision. They are deeply collaborative groupings of churches- between denominations, between clergy and laity, and between different communities- working together to proclaim afresh the gospel to each generation, faithful to its tune but improvising together to create new melodies for our place and time.

We are looking for clergy who resonate with this, who love God and love people, who will look outwards into the community in mission, help people grow in faith and who will enable the faith and gifts of all. If this stirs something in you, we'd love to hear from you.

+Rob Carlisle
Bishop of Carlisle



Who are we?



St Mary's Church, Maryport



All Souls Church, Netherton



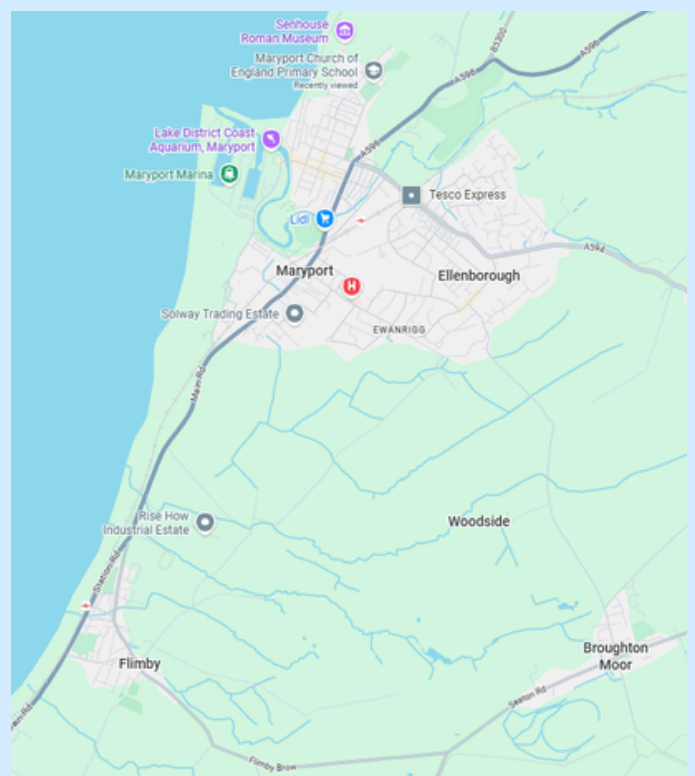
St Nicholas Church, Flimby

We are an established benefice worshipping in the Middle Anglican Tradition on the beautiful West coast of Cumbria.

Our Benefice is made up of 3 Churches covering the following parishes:

- St Mary's Church - Maryport
- All Souls Church – Netherton with Broughton Moor
- St Nicholas Church – Flimby

We are seeking to look outward, to share God's love with the people in our parishes.



Vision and Priorities

We have actively engaged with our congregations, users of our buildings, as well as the wider community to best understand the hopes, needs and priorities for our Benefice. During this discerning process, we have identified the characteristics we are looking for in our new priest. This has formed the following priorities and personal specification.

Priorities:

- A strong focus on reaching out and engaging with the local community
- Reaching the younger generation, growing and developing our work with children and young people
- Having a heart for mission, reaching the lost and growing the church
- Establishing good quality pastoral care for all ages and stages of life
- Deepening unity and working relationships between the 3 Churches in the Benefice



Sunset over Scotland and Solway Firth from Flimby beach

Personal Specification

We are looking for someone who:

- Displays Godly Leadership, rooted in a strong personal faith, is discerning, and makes the most of all opportunities to empower and equip those within church.
- Demonstrates excellent interpersonal skills and is friendly and approachable.
- Has well developed communication skills.
- Has a heart for people and pastoral care who is able to come alongside people of all generations.
- Is keen to get involved with Church and community life.

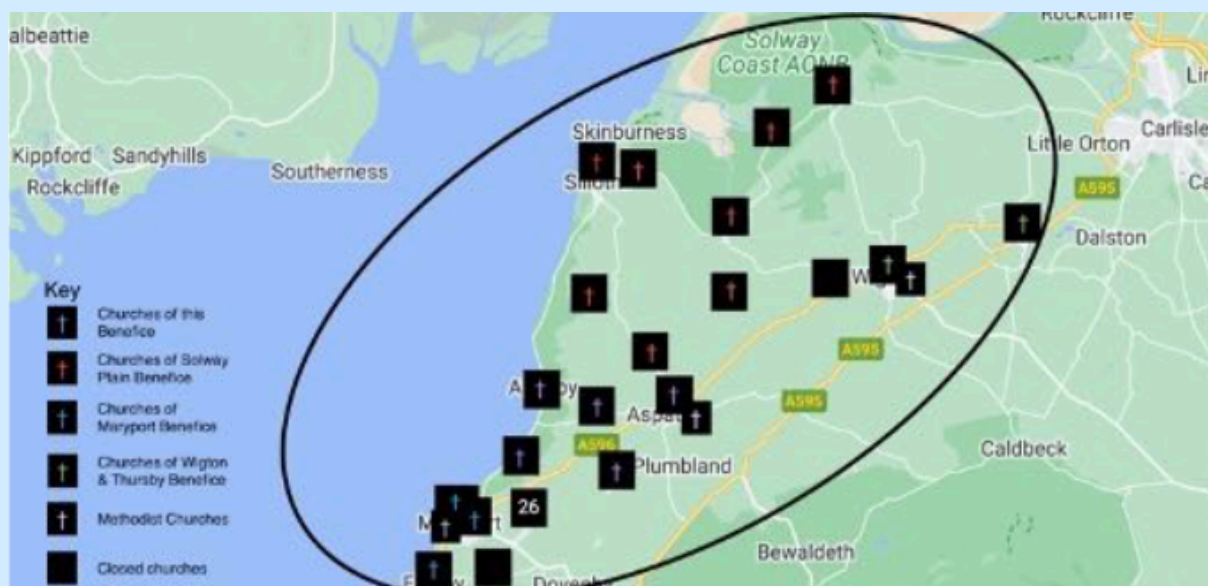
Criffel View Mission Community

Mission Communities are a new way of conducting ministry in a context where multi-parish ministry is now the norm. They help us to navigate away from a model of ministry where a resident stipendiary vicar did everything, to a collaborative form of ministry where the whole church conducts the mission and ministry of a parish. Operating collaboratively across traditional boundaries of parish, benefice and denomination a Mission Community is intended to maximise the gifts God has given to his Church and enable us all to fulfil our vocation better: allowing you to focus on the ordained role of a priest, and releasing our gifts and passions in active service.

They are designed to be ecumenical, recognising that we increasingly need to pull together as a single Christian presence in each community. They are also designed to be collegiate, so that we work more closely together with a common purpose. Our ecumenical Mission Community includes the Methodist and Anglican Churches of Maryport (to the West), Wigton (to the East) and the Solway Plain (to the North). Relationships within the mission community are still developing.

The essential functions of Mission Community are to:

- Pray together
- Encourage discipleship
- Promote vocations for all Christians
- Oversee stewardship of our gifts (including money and buildings) to resource the Church's mission
- Find ways of operating effectively together without creating additional layers of governance
- Enable collaborative mission at local level



Our Commitment to You

We will provide you with a brand-new energy efficient vicarage.

You will be supported in prayer and practically by our wider ministry team and our dedicated congregations.

You will have support from colleagues within the Mission Community and Deanery.

There will be opportunity to work collaboratively with others in the Mission Community.

There is scope to develop new ways of working and outreach.

The opportunity to become part of a friendly and welcoming local community.

Maryport Harbour

Colleagues

We are blessed to have a dedicated Ministry Team in our Benefice

We have recently established a monthly ministry team meeting which we are finding to be a blessing as we seek to work more closely together and support each other. In these meetings we pray, plan services, organise rotas and study God's word together.



Captain Jeff Hill
Church Army Officer and
Children and young
families pioneer enabler

Julie Batsford
Lay Reader



Linda Radcliffe
Lay Reader

David and Esther Herbert
Lay Leaders



Chris Ashcroft
Lay Reader

We also have good ecumenical links with the Methodist Church and often run activities together e.g. Lent Courses.

Mission Initiatives

We are seeking to look outwards to share God's love and reach people from all stages and walks of life in a variety of ways, from traditional to more innovative.

Here is a quick overview of some of the exciting things that we have going on across our benefice (more details later in the profile):

- Baby time
- 3 in 1 lunch
- After school club
- Foodbank
- Reflections café
- Fun Church
- Family Service
- Vestry Coffee Stop
- Craft Club
- Warm Spaces



Why???

Follow

Join us for informal discussions, food and exploring Christianity

When: Tuesday 6th January, 7.30pm

Where: Signpost, Curzon Street, Maryport



For more information:

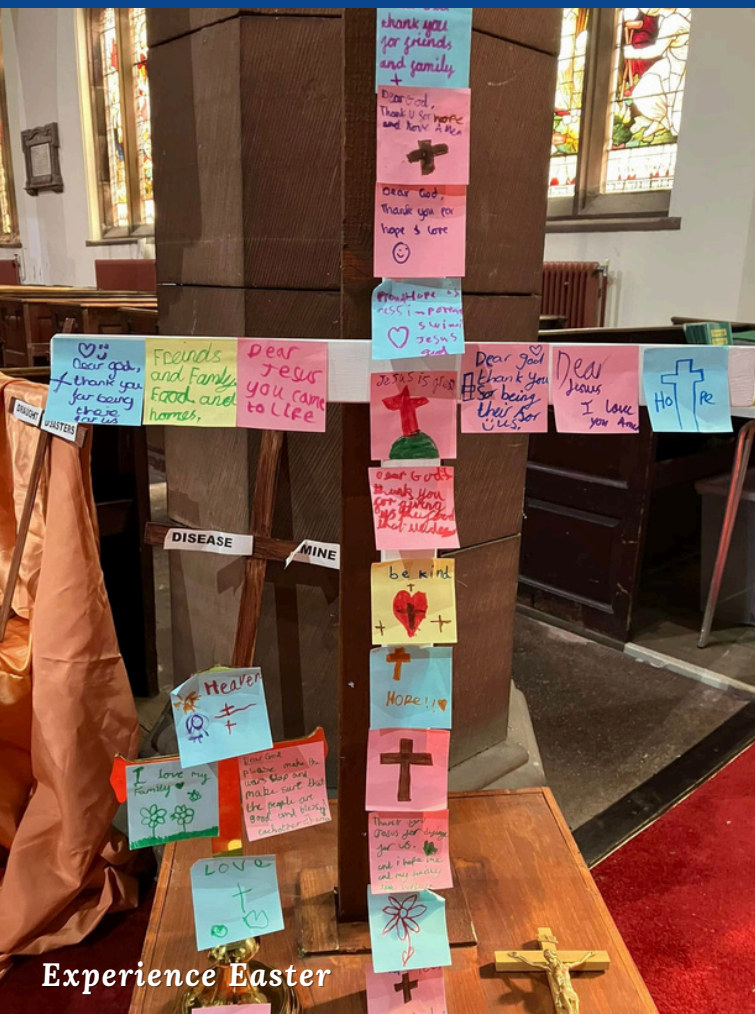
Jeff Hill - 07986731374

Jeffrey.Hill@carlisle-diocese.org.uk

Men's Breakfast – This lay led Mission Community initiative attracts around 15-20 men from a variety of churches and those on the periphery of Church. Meeting monthly on a Saturday in a local hotel, a good full English breakfast is enjoyed, along with a variety of different speakers

Why? – Is an accessible way to explore, discuss and learn more about Christianity. Focusing on a different theme each month attracting regular Church goers and those exploring. Why is organised by Capt. Jeff and lay people from the Mission Community and meets in Signpost (a converted shop run by the Methodist Church in Maryport)

Serving Schools



Experience Easter

Strong links with local schools have been cultivated over the years with clergy and lay members.

Links have been established with several primary schools in Maryport along with the primary school in both Flimby and Broughton Moor together with Netherhall Secondary School.

Church members serve on the governors of various schools in their parishes.

The Churches in our Benefice are used on a regular basis by the schools in the following ways:

- End-of-term services
- End of year leavers services
- School Carol Services
- Annual Christmas tree festival
- Representation at remembrance Service
- RE curriculum work

Experience Easter, Experience Harvest and Experience Christmas

Together with Captain Jeff and Solway Network Youth Church each year we have hosted Experience Easter, Experience Harvest and Experience Christmas within our Benefice.

These events provide opportunities for local schools to come and learn more about the theme in an interactive and engaging way.



Experience Harvest

Maryport Church of England Primary School



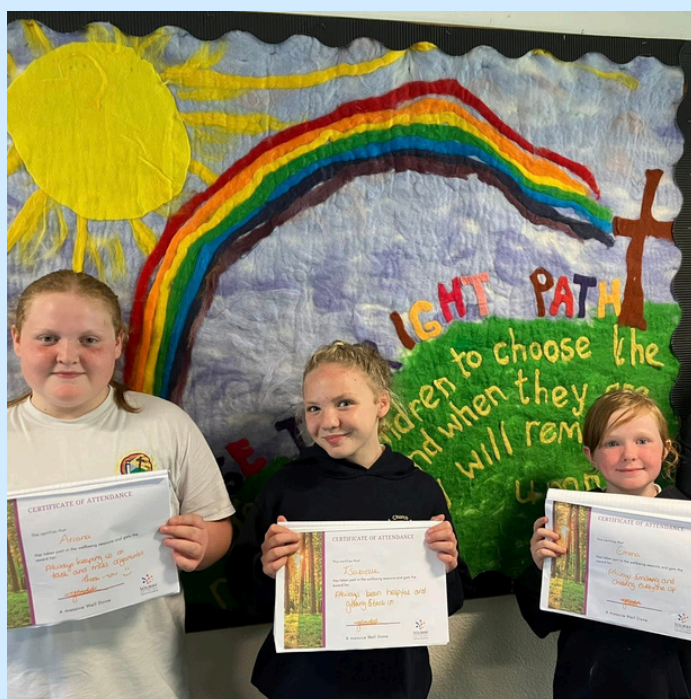
At Maryport Church of England Primary School, our vision is to 'teach children to choose the right path and when they are older they will remain on it' -Proverbs 22:6 .

We live out our vision by 'Teaching children to remain on the right path...'.
We strive to develop character for our children to become good global citizens. We create a happy, safe, successful learning environment which will clearly reflect Christian values enabling our pupils to develop their unique potential and a love of learning which promotes aspirations and prepares them well to live life in all its fullness. As a Church of England School we encourage our children to live a life rooted in faith and love.

'Teach children to choose the right path and when they are older they will remain on it.'
Proverbs 22:6

Our mission for when they leave Maryport Church of England Primary School is for our children to:

- Be independent learners
- Have high levels of self esteem
- Live by Christian values
- Celebrate difference and respect everyone's ideas, culture, background and faith or beliefs
- Be happy and confident in what they can achieve
- Be the best they can be



Solway Network Youth Church

Network Youth Church is a new way of doing and being church with young people across Cumbria. Here in Solway we do this following the Cell, Congregation, and celebration model of church.

To support the growth of rounded Young People who accept themselves and one another for who they are, enjoy exploring faith and journeying together.

To achieve this Solway Network Youth Church:

- **Builds** on existing groups meeting around a Deanery (eg. Confirmation Groups, small youth groups, Christian school based clubs)
- **Offers** support and training to develop youth groups and grow local leadership.
- **Encourages** churches and Mission Communities to grow their work with young people.
- **Provides** a means of linking existing local groups of young people so they can come together to experience Christian worship and fellowship.
- **Runs** residentials and events for youth leaders and their youth groups to attend together.
- **Provides** new opportunities for young people with no current church connection to explore the Christian faith.
- **Encourages** Churches to support and pray for the young people in the deanery and the work of Solway NYC.



Residential Weekend at Knock

‘We will tell the next generation the praiseworthy deeds of the Lord, his power and the wonders he has done.’

Psalms 78v2



Maryport After School Club

Churches in focus

St Mary's Church, Maryport

St Mary's is the oldest place of worship in Maryport, it was originally constructed in 1760 and underwent significant renovations in the late 19th century. The town has a population of approximately 12,000, with St Mary's parish encompassing around 2,000–3,000 residents.

St Mary's has a Holy Communion service with a congregation about 25–30 people on a fortnightly basis, this alternates with All Souls at Netherton.

St Mary's serves as the civic church for the town, hosting key community events such as the annual Remembrance Sunday Civic Service. This service is organised by the Town Council, with St Mary's providing facilitation and venue support, and is typically attended by around 300 people including representative of our armed forces, emergency services and community groups together with members of the public.

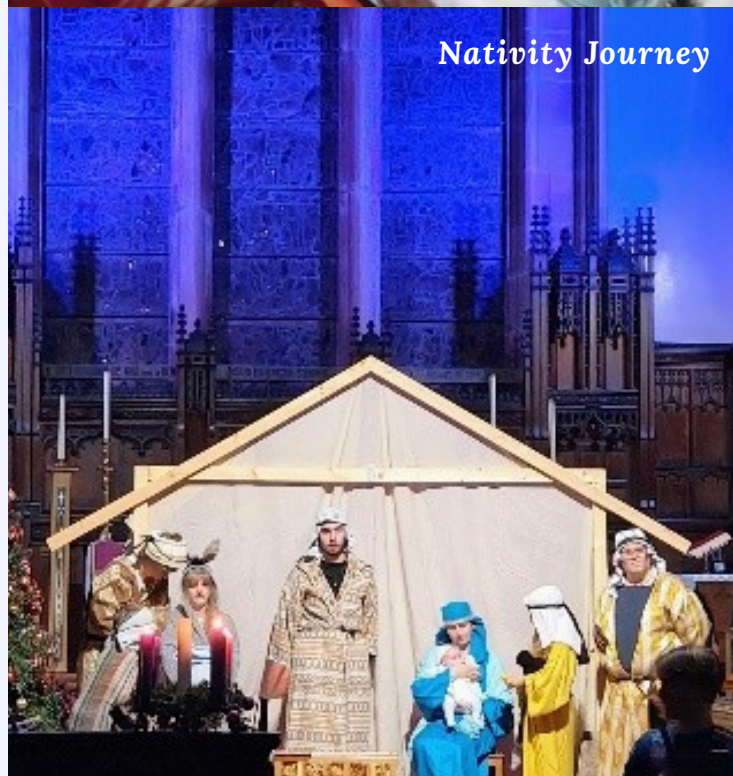
Alternative services include:

This year, St Mary's hosted its inaugural **Nativity Journey**, generously supported by Captain Jeff Hill and his family. The event proved highly successful, drawing approximately 80 participants who were not regular church attendees.

Annual Remembrance service, brings families of the departed together in a quiet service of prayer.



Strawberry Afternoon Tea



Nativity Journey



Craft Fayre Weekend

The **Reflections Group**, which meets fortnightly. It primarily focuses on crafts, including knitting and crocheting. Recently, members knitted and crocheted hundreds of poppies, which were displayed as a striking cascade at the church entrance for Remembrance. All funds raised go to support the work of the Church.

The local **Foodbank** operates from the church three times a week, distributing food parcels to families in need. This service is highly valued by the community. On Fridays, the Citizens Advice Bureau (CAB) holds sessions at the church to offer support and guidance on a variety of personal issues.

Running alongside the Foodbank during the winter months is the **Warm Spaces** initiative, providing a warm, safe environment where individuals can enjoy hot soup, toast, tea, and friendly conversation.

The local **Rotary Club** organise an annual Schools Carol Service bringing together school choirs from all our local primary and secondary schools. This popular event unites the community and typically attracts over 200 attendees.

Our clergy over the years have developed good relationships with **Maryport Church of England Primary School** through regular visits, delivery of assemblies and being the church representative on the Governing Body. The school utilise our church throughout the year for many events. This includes the annual Christmas Christingle service attended by all the pupils (300+) and is generously supported by local businesses.



School Carol Service

An extension of the work with schools is The **After-School Club** that welcomes pupils in Years 4 to 7 from schools in Maryport. It runs every Thursday during term time at St Mary's Church.

There are a variety of community events and activities such as afternoon teas, bingo nights, bring-and-share suppers, and a summer fair. All events attract residents who do not typically attend Sunday worship.

St Mary's demonstrates a strong commitment to **community engagement and outreach**.



Prize Bingo Night

Churches in focus

All Souls Church, Netherton with Broughton Moor

There are approximately 9000 people in the parish.

On a Sunday morning worship our congregation is between 30 and 40. All Souls Church has a small choir.

There are lots of exciting things going on in our Church and Hall:

Baby time, weekly attracting young adults and their babies that do not normally come to church.

3 in 1 lunch, monthly, attracting older people, a good percentage of whom do not come to church, a good number that come are widows or widowers that use it as a safe place to meet their friends.

Fun Church attracting families that do not come to church offering them Christian teaching in a fun way.



Baby Time



VE Day Afternoon Tea

Social and fund raising events about six or seven in the year these range from afternoon teas, Christmas sales, Musical bingo and social evenings with a meal and games these attract a wide range of people and about half have no connection to the church.



Fun Church

We are proposing to start a gardening club to reach the isolated in our local community.

All Souls has a spacious hall with well equipped kitchen which provides a valuable community asset. Used by the community for Scouts, Weight Watchers, Quilters, Zumba, Keep Fit, Birthday Parties, meetings, other celebrations as well as church events.

Mother's Union @ All Souls

MU is a group that has been active in All Souls Church for 110 years and we have thirty members that meet monthly October to May, with special events in between the last two years we have been focusing on "Rise Up" a hot topic in the MU, raising awareness of domestic abuse with boards in the hall and a "Souls of my Shoe" display in the church.

We have received bronze and silver awards which involved praying for people in these situations, having notices up informing people where they can get help and providing items to organisations that help people, we have had a bible study to link this in with the bible, speakers at our branch meetings from organisation that help and equality type sermons to highlight the need for us to do this work .

We support all the work that goes on in the church staffing the fun church and 3 in 1 lunch and the fund raising and social events. We have links with the local schools providing bags at the start of term for new parents leaving their children at school for the first time, providing cakes for one of the schools to help them fund raise. We have links with the foodbank collecting food at harvest time and with Maryport Rescue supporting them during their fund raising fun day providing a baby and toddler tent.

Providing food for the MU caravan at St bees that offers free holidays to people who really need one and cannot afford one and toiletries for hospitals to give out if someone has no family to provide them for them and women's refuges.



MU at Maryport Rescue Fun Day

Mothers' UNION
Christian care for families
Diocese of Carlisle



Supporting Ellenborough Academy's Summer Fayre

Churches in focus

St Nicholas Church, Flimby

The village has a population of just over 1700 people. St Nicholas has a small but active congregation of around 10-15 people for Sunday worship, rising to 20-45 for Family Services. St Nicholas has a joint Church of England and Methodist congregation.

Worship at St Nicholas is varied with different styles of worship each week from Family Services, Methodist led services to more traditional services of Holy Communion.

Our **Family Service** is led by lay members of the Ministry Team. It is “Church, but not as you know it”. We start with a fellowship time prior to the service with breakfast snacks and drinks. We have interactive fun-filled services which are supported by the whole congregation and attract local families who do not usually attend regular Sunday services. Our annual Family Carol Service with Pop-Up Nativity is always popular with people coming dressed as a character from the nativity.

St Nicholas hosts the **Civic Remembrance Service** for the village, and this is well supported by local people, civic groups and dignitaries.

Our **Crib and Christingle Service** last year attracted about 100 members of the local community and raises money for the Children’s Society.

The PCC although small in number work very well together and the Church is active in the community. It is very much a village Church and is well supported by the village financially, and at events.

A **quarterly newsletter** is delivered by the congregation to the whole village with news from the Church, details of events and updates.



Family Carol Service and Pop Up Nativity

There are various community outreach activities which take place during the week at St Nicholas Church along with seasonal special events:

Vestry Coffee Stop – This is run like a little coffee shop with fresh cake and good quality hot drinks for a bargain price of £1 every Tuesday morning. This has proved a valuable way of reaching out to the village, meeting people and helping ease loneliness. St Nicholas Church is situated on the West Coast Cycle path so we often welcome dog walkers and cyclists as they pass. A lot of non-Church goers come and are then invited to other Church events.



Catering to all at Vestry Coffee Stop!



Teddy Bears Picnic Family Service



Carol Singing with Flimby Band



Garden Party

Craft Club - 2 Tuesdays a month we have a 'knit and natter' type group. This was set up for anyone who wanted to come especially for people who lived alone or just wanted some company for a couple of hours. Members have made lots of items for charities and care facilities, along with poppies for our annual Remembrance display.

Coffee Mornings and Cake Sales take place 4 times a year in the Bandroom raising funds for the work of the Church.

Our annual **Garden Party** is always a popular community event for the village and is held in marquees in the Church Grounds with lots of stalls, food, games and music from Flimby Band.

We also have an annual Christmas Raffle followed by **Carol Singing** around the village with Flimby Band.

The PCC of St Nicholas are forward thinking, hardworking and always open to new ideas and ways of raising both the profile and the financial stability of the Church.

Flimby Girls Brigade

1st Flimby Girls Brigade is affiliated to St Nicholas Church. They meet each Wednesday in term time in Flimby Bandroom.

They parade at the Remembrance service and are invited along to other services during the year.

Our Church Warden helps monthly with the younger group and supports for activities and outings.



Housing

Tired of draughty cold vicarages?
We have great news for you!

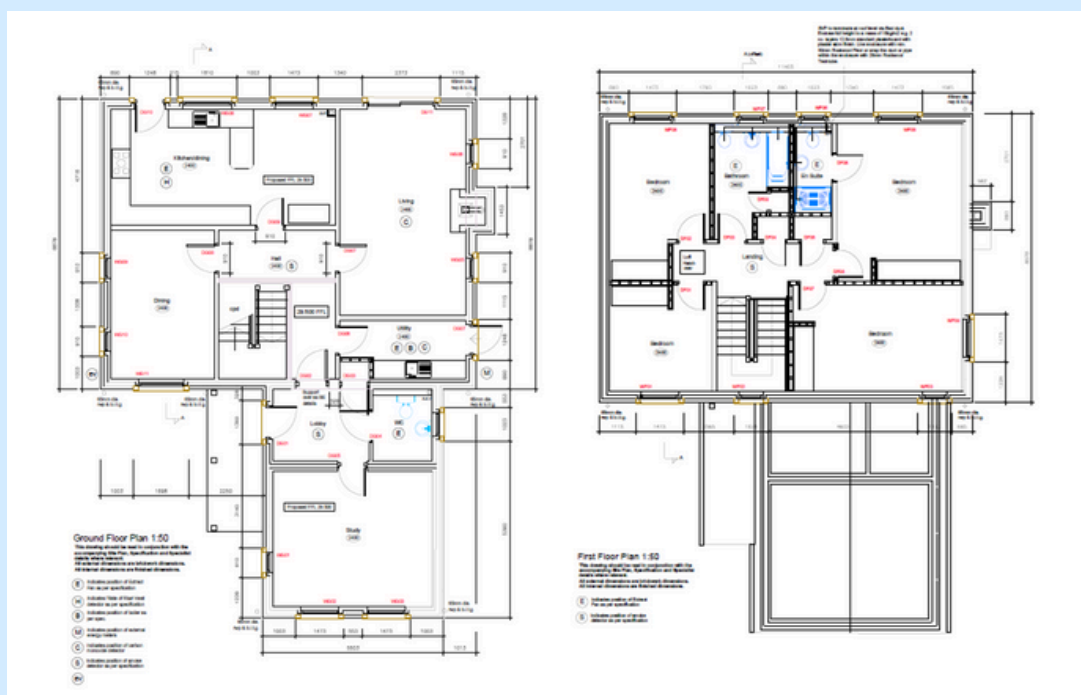
The vicarage at Netherton is a new build building which is being built to the latest energy efficient specifications.

This new house follows the green guide and has:

- Downstairs study and toilet separate from the main living space
- Living room with wood burner
- Dining room
- Kitchen with breakfast bar
- Utility Room
- Four bedrooms (one with ensuite shower room)
- Family bathroom
- Detached garage
- Enclosed gardens



This house is built to the latest building regulations to be a warm house and therefore economical to run. In line with our net carbon ambitions we have gone further than required and this house will have an air source heat pump running the central heating with solar panels, battery storage and heat recovery installed. It will be EPC A.



Living Here

Maryport, Broughton Moor and Flimby are lovely areas to live. Home to some of the most stunning sunsets. Visitors often comment on the friendliness of the people in the community.

There are a wide variety of amenities in Maryport and Flimby with good places to eat, shops, pubs, local history, museums, tourist attractions, sport groups and activities for children and young people. Maryport has shops both large (Lidl, B&M) and smaller independent shops which provide a good range of shopping experiences. Other large shops, supermarkets and cinemas can be found 10 mins away in Workington.

There are many beautiful miles of the coast to explore, countryside walks, cycle paths and the Lake District is right next door if you fancy something more adventurous.

Maryport and Flimby boast good transport links by both rail and road with the A596 and Cumbrian Coast rail line running through the benefice. We even get some steam train specials passing down the coast too!

There are a variety of good schools in the area, both primary and secondary.

There are several care and residential homes within the Benefice.

There is a lot of history in the local area, from Roman forts to ship building and coal mining.



Royal Scot at Flimby



Local Shops of Maryport

It is an exciting time to come to this area. The transformation of Maryport is underway to make it an even better place to live, work and visit through regeneration projects. There are £12 million of schemes taking place, which are funded by the Government, Historic England and Cumberland Council. All the projects are due to be complete in 2026. More information can be found here: <https://www.cumberland.gov.uk/planning-and-building-control/regeneration-project/maryport-regeneration-projects>

In addition to this, a long-term investment of £20 million – £2 million per year over ten years – for Flimby, Maryport and Broughton Moor has recently been secured through Labour's Pride in Place programme

Appendix

Typical current Sunday Rota:

	St Mary's @ 09:30 am	All Souls @ 09:30 am	St Nicholas @ 11 am	Christenings (as required)
1st Sunday	Holy Communion		Family Service – led by David, Esther & Jeff	St Mary's
2nd Sunday		Holy Communion	Holy Communion	All Souls
3rd Sunday	Holy Communion		Holy Communion	St Nicholas
4th Sunday		Holy Communion	Methodist Service	
5th Sunday	Team Service rotating between all 3 Churches			

Figures of average weddings, Christenings and funerals

	Weddings	Christenings	Funerals
St Mary's Church	1	12	17
All Souls Church	2	21	32
St Nicholas Church	2	5	11

Finances of each parish

As with many Churches in the country, St Mary's Church is facing financial challenges. All Souls Church and St Nicholas Church are in a stronger position financially.

There are active groups of fundraisers across all 3 Parishes.



Various fundraising activities across the Benefice

Appendix



Aurora borealis over Maryport



Bluebells in Rannerdale Valley, Lake District

Useful Links:

St Mary's Church

<https://www.facebook.com/profile.php?id=100080293508890>

All Souls Church

<https://www.facebook.com/profile.php?id=100068806710286>

St Nicholas Church

<https://www.facebook.com/stnicholasflimby>

Maryport Team Ministry YouTube Page

<https://www.youtube.com/@maryportteamministry8621>

Maryport Church of England Primary School

<https://maryport.cumbria.sch.uk/>

Diocese of Carlisle

<https://www.carlisediocese.org.uk/>

God for All

<https://godforall.org.uk/>

Solway Network Youth Church

<https://www.facebook.com/SolwayNYC>

Local area

<https://www.visitlakedistrict.com/explore/maryport>

<https://www.visitcumbria.com/wc/maryport/>

<https://www.facebook.com/p/Visit-Maryport-61557904506479/>