

Welcome to the East of Eden Benefices





Contents

3. Welcome to our benefices
5. The people we are looking for
6. What we can offer
7. Our schools
8. Serving our communities
10. Our Mission Community
11. Our parishes
14. Our finances
15. The Rectory, Kirkoswald
16. The Vicarage, Langwathby
17. Thank you for reading our profile

Welcome to our benefices

Welcome to the East of Eden – unashamedly rural, but not stuck in the mud!

Our two benefices consist of twelve parishes serving villages and hamlets from Croglin to Culgaith in the beautiful Eden Valley. We want to work together under the leadership of our new priests as we seek to follow Jesus and serve our communities. We hope our new incumbent will chair a joint meeting of all the PCCs in each benefice twice a year. Routine meetings of individual PCCs will continue to be facilitated by the lay vice-chairs .

We enjoy variety and our worship ranges from Holy Communion (Common Worship and BCP), Morning Worship and BCP Evening Prayer to informal All Age worship and café church. We hope our new priests will help us explore new ways of worshipping while also continuing to sustain cherished traditions.



Welcome to our benefices

Beyond the church walls we work with each other and our Methodist friends in the East of Eden Mission Community to serve the people in our local area. We have good links with our four Church of England primary schools: ministers lead collective worship, churches host school services and church members are valued governors and volunteers in the schools. We would like our new priests to build on these foundations and strengthen our ties with young families.

Lay ministry is a vital part of our worship and wider church life and we hope our new incumbent will encourage and enable people to develop their gifts as we all work together.

The East of Eden offers an exciting opportunity for a prayerful and enthusiastic priest who loves rural ministry, rejoices in the breadth of the Church of England and longs to work collaboratively with God's people to build God's kingdom here in the East of Eden.



The people we are looking for

Rector of the Kirkoswald Benefice, Priest in charge of Crossfell Benefice and co-leader of the East of Eden Mission Community.

Associate Minister (3 days including Sunday) of the Kirkoswald and Cross Fell Benefices.

(For full details, please refer to Role Descriptions for each post)

We hope our new priests will:

- Be spiritual leaders of our benefices and mission community.
- Encourage and enable fruitful, appropriate change.
- Be prayerful and able to encourage the prayer lives of others.
- Be committed to rural ministry and able to explore new ways of ministering in this context.
- Lead liturgical worship creatively and with dignity, value the Eucharist, and encourage a contemporary approach to worship appropriate to each church.
- Work collaboratively with colleagues, laity and ecumenical partners
- Engage with, and provide pastoral support for, people of all ages.
- Encourage and enable laity, building on our strong foundations which include a team of worship leaders.
- Build on community links, especially those with local schools.
- Have a flexible attitude and an inclusive and welcoming approach to Ministry and Mission.



What we can offer

A strong ministry team: We are fortunate to have a priest with PTO, Revd Fiona Jenkins, Licensed Lay Readers Julie Barrett and Bryan Gray and a great team of local lay leaders of worship. As part of the East of Eden Mission Community, you will also work alongside Methodist ministers Rev Dave Milner and Circuit Pastor Dean Lawson.

In addition to the current ministry team, we are recruiting

- a full time Anglican incumbent,
- a part-time Anglican associate priest
- full time lay pioneer minister jointly funded by the Anglican and Methodist churches.

The person appointed as incumbent will also become a co-leader of the East of Eden Mission Community.

Administrative support from Mission Community administrator.

Anna Chaplaincy team: The Anna Chaplaincy team of Wendy Wilson, Cindy Butterworth and Julie Barrett offers regular visits to older people in their own homes or support via telephone chats.

Enthusiastic and engaged laity: Members lead All Age worship and after school clubs; enable services to run smoothly; run prayer groups, social events and fellowship lunches; organize fund raising; volunteer in local schools and clubs; lead environmental projects such as Eco-Church or God's Little Acre and much, much more.

Open the Book team: This is a new venture to support our church schools. The ecumenical team is in training and hopes to start telling Bible stories in schools in early 2025.

An amazing place to live and work!

Our schools

We enjoy excellent relationships with the four Church of England primary schools in the East of Eden. They are:

- Langwathby 150 pupils
- Lazonby 100 pupils
- Kirkoswald 63 pupils
- Culgaith 40 pupils

The schools welcome ministers and our local NISCU worker, Ruth Evans, to lead collective worship. We have responded to the interregnum by developing an Open the Book team to maintain a regular presence in the schools. The churches enjoy hosting services for schools at occasions such as Leavers, Christmas, Easter & Harvest.



Serving our communities

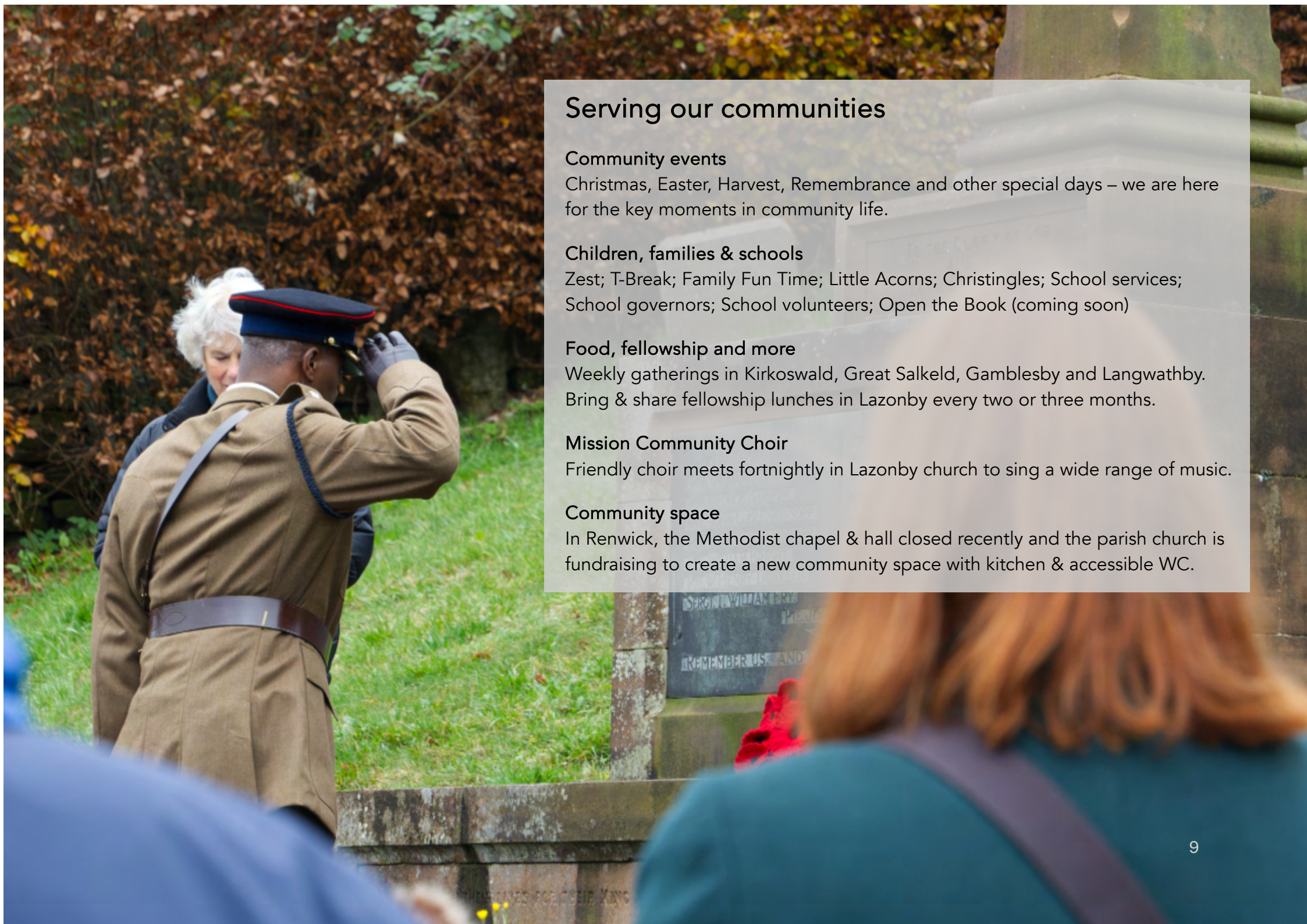
Life events

We are here for people in all the joys and sorrows of life.

Numbers fluctuate from year to year, but typical figures for occasional offices are

	Baptisms	Weddings	Funerals
Kirkoswald	4	2	1
Lazonby	2	1	2
Great Salkeld	1	2	3
Renwick	1	1	1
Langwathby	3	1	2
Addingham	0	1	4
Culgaith	2	0	1
Edenhall	1	2	1
Melmerby	0	1	2
Ousby	1	0	3
Kirkland	0	0	1
Skirwith	0	0	0





Serving our communities

Community events

Christmas, Easter, Harvest, Remembrance and other special days – we are here for the key moments in community life.

Children, families & schools

Zest; T-Break; Family Fun Time; Little Acorns; Christingles; School services; School governors; School volunteers; Open the Book (coming soon)

Food, fellowship and more

Weekly gatherings in Kirkoswald, Great Salkeld, Gamblesby and Langwathby. Bring & share fellowship lunches in Lazonby every two or three months.

Mission Community Choir

Friendly choir meets fortnightly in Lazonby church to sing a wide range of music.

Community space

In Renwick, the Methodist chapel & hall closed recently and the parish church is fundraising to create a new community space with kitchen & accessible WC.

Our Mission Community

Cumbria is England's first ecumenical county, in which four partner denominations (Anglicans, Methodists, United Reformed Church and the Salvation Army) have covenanted to work together.





In 2015, the God for All vision was launched, underpinned by a commitment across denominations in Cumbria to grow God's Kingdom through the development of Mission Communities. The vision has four central themes: Follow Daily, Speak Boldly, Care Deeply and Tread Gently.

The East of Eden Mission Community includes the Kirkoswald Benefice and the Cross Fell benefice, together with the Methodist chapels of Kirkoswald, Langwathby, Gamblesby and Alston.





We are committed to sharing ministry and mission together. As part of this commitment, we are recruiting a full time lay pioneer minister, jointly funded by the Anglican and Methodist churches, to work throughout the Mission Community.



Our parishes - Benefice of Kirkoswald, Renwick with Croglin, Lazonby and Great Salkeld

St Oswald's, Kirkoswald	All Saints, Renwick with Croglin	St Nicholas, Lazonby	St Cuthbert, Great Salkeld
			
<p>Population 716. Well maintained old building with seating capacity for 250. Strong connection with local C of E Primary School – the deputy head is our organist. Separate bell tower at the top of the hill overlooking the Church. Prior to the Reformation the "College" adjacent to the Church was a seminary training priests. The village has a community shop, a surgery with a dispensary and two pubs serving excellent food as well as the primary school. The Church Institute in the village square doubles up as the village hall. The village has a strong sense of community with cricket and football teams both highly placed in their respective leagues.</p>	<p>Population 278. Renwick and Croglin are two small working villages in the foothills of the Pennines AONB. Our church is a small, friendly, welcoming place. We see our work as serving the local community, who, in turn, are supportive of our work. We have strong links to the other parishes in the Benefice despite being the most isolated. The congregation is mostly elderly but occasionally boosted by local children and their parents. All Saints has a long history of ecumenical cooperation with our Methodist friends in Renwick. We have an active PCC with many talented people prepared to put time and effort into the work of the Church.</p>	<p>Population 1061. We seek to follow and serve Jesus in our community. Our well-maintained church building has flexible space, a disabled toilet and a servery. These allow us to run family-friendly events such as our innovative, all-age 'Zest' service monthly, and a fortnightly 'T-Break' after school family club, plus hosting an EEMC community choir. Worshippers experience a variety of Sunday service styles- with 2 per month being lay-led. Also important is a monthly, weekday communion service at nearby housing for the over 50's. We meet regularly in someone's home for bible study, prayer and fellowship. We have excellent links with our local primary school (3 church members are governors) in our thriving, village of Lazonby.</p>	<p>Population 467. Our well maintained 11th century church is set in the heart of the village in beautiful surroundings. We are open 24/7 offering a friendly welcome to all, a toilet, kitchenette and WiFi. Our churchwardens, PCC and enthusiastic congregation are committed to support our ministry and maintain this beautiful historic building. Great Salkeld is a small desirable village of mainly older or retired people but there are a few young families. The village hall is a popular venue for activities ranging from keep fit, yoga, Playgroup and music evenings, and a community run coffee morning every Tuesday. We also have a popular village pub which serves excellent food.</p>

Our parishes - Cross Fell Benefice

St Michael & All Angels, Addingham	All Saints, Culgaith	St Cuthbert, Edenhall	St Peter, Langwathby
			
<p>Population 800 The Parish of Addingham embraces the villages of Hunsonby, Winskill, Gamblesby, Glassonby, Little Salkeld and the hamlet of Unthank. The church is always open, and we receive many visitors because of the footpath to the stone circle at Long Meg which runs through the churchyard. We have a wonderful setting for musical events, with good acoustics and a fine organ. We have, too, a large, well-used, and beautiful churchyard, which is now being managed very much with wildlife and biodiversity in mind. We are working towards the A Rocha national Eco-Church Silver award. We enjoy a range of regular Sunday Services and encourage support for our special services such as Mothering Sunday, Harvest and our family Nativity.</p>	<p>Population 430 All Saints Church Culgaith, is set in the heart of the village surrounded by beautiful scenery wherever you look! Apart from our normal Ecumenical/ Anglican services we have an Ecumenical Housegroup which is open to all fortnightly and for a more relaxed style of Worship we hold Cafe Church in the village hall quarterly. There is a community spirit in the village from which we receive support across all ages at events and festival holiday services, the school regularly comes into church for its festival assemblies to which their parents and the community are invited which fills the church not only with people but joy!</p>	<p>Population 190 Set in beautiful parkland with sweeping views across to the fells, St Cuthbert's is one of the oldest churches in the Eden valley, tracing its origins to the 9th century and preserving in its stonework late Saxon and early Norman elements, together with some remarkable early stained glass and brasses. The patronage of the Musgraves, owners of the Edenhall estate for over five centuries, is everywhere apparent in the richness of the interior, including memorials and a crypt, and this, together with the peaceful setting, attracts many visitors. The church is always open for private prayer and reflection, and the churchyard is an important focal point for local families</p>	<p>Population 610 Langwathby is the largest of the villages in the Cross Fell Benefice, and St Peter's Church is in the very centre. There are two places of worship in the village, St Peter's and the Methodist Chapel, and these days our services alternate between the two. In addition to Sunday mornings, we hold a monthly reflective service in the style of Taizé in the Methodist chapel. Strong links have been forged with the primary school in the village. A member of the clergy has been a foundation governor, and regularly lead assemblies in school. Members of the congregation and clergy work with the school's Worship Council to produce regular services in church to celebrate the major festivals and the end of the schoolyear.</p>

Our parishes - Cross Fell Benefice (Fellside churches)

St Lawrence, Kirkland	St John the Baptist, Melmerby	St Luke, Ousby	St John the Evangelist, Skirwith
			
<p>Population 180 Our church stands at the foot of the pathway to the summit of Cross Fell. It is in a very quiet and peaceful setting, often visited by walkers before climbing up the fell to join the Pennine Way. The building is part late thirteenth century, or early fourteenth, but there was a rebuilding and restoration in 1768 and another in 1880. Sheep safely graze in our country churchyard. Our parish includes the small settlement of Kirkland immediately around the church, and the village of Blencarn. We share our services with Melmerby, Ousby and Skirwith churches on a monthly rota, and very much value the fellowship that this brings.</p>	<p>Population 260 We have had a church in Melmerby since C13th and the remains of an old cross in the churchyard would indicate an even earlier Christian presence.</p> <p>We want the village to see the church as a welcoming place even if the majority do not see it as a worshipping place. Our village is very supportive of the church as a building.</p> <p>Our challenge is to continue to review how we share the Christian message in our community.</p>	<p>Population 240 St Luke's is a 12/13th C fellside church set in an idyllic isolated spot outside the village. We proudly display a 13C wooden effigy of a knight, only one of two in Cumbria. We enjoy traditional services each month and special services throughout the year. We fundraise with church fetes and music evenings.</p> <p>Ousby is a scattered village nestling under Crossfell. Its inhabitants have always worked the land whether quarrying or farming. Recently the village has grown with a housing development and we have an active Community Centre, PO and pub.</p> <p>Ousby is a doubly thankful village and this is celebrated in St Luke's. There is strong support for the church from the farming community.</p>	<p>Population 250 The Parish Church of St John the Evangelist (St John's) was built in 1856 in the decorated Gothic style. The building has been well cared for over the years and is generally well maintained.</p> <p>Skirwith hosts "Fellside Connect", one of the Mission Community small groups that meet on a weekday evening. Recently we have followed a course entitled "Alive in Christ" with up to 9 people attending.</p> <p>St John's has Anglo-Catholic heritage and is linked with the College of the Resurrection in Mirfield. The Church hosts two services a year organised and led by visiting groups: a Corpus Christi service and a Memorial Service for John Bradburne, the missionary son of a former Vicar of St John's.</p>

Our finances – information from 2023 accounts

Benefice of Kirkoswald, Renwick w Croglin, Lazonby & Great Salkeld				
	Kirkoswald	Lazonby	Great Salkeld	Renwick
Total income	23,715	34,479	17,614	26,918
<i>Ministry contribution</i>	15,650	21,319	11,742	7,993
<i>All other outgoings</i>	7,953	15,034	11,076	8,332
Total expenditure	23,603	36,353	22,818	16,325
Reserves	25,051	172,373	88,532	44,013
		<i>£130k restricted legacy</i>		<i>Inc re-ordering project.</i>

Cross Fell Benefice								
	Addingham	Culgaith	Edenhall	Langwathby	Melmerby	Kirkland	Ousby	Skirwith
Total income	16,000	6,532	7,213	19,785	5,957	1,090	7,000	10,670
<i>Ministry contribution</i>	3,780	2,310	1,800	10,412	2,000	1,105	2,100	3,450
<i>All other outgoings</i>	16,000	3,534	3,089	7,692	3,886	1,616	3,000	5,996
Total expenditure	19,780	5,844	4,889	18,104	5,886	2,721	5,100	9,446
Reserves	62,000	12,278	36,238	19,834	4,621	Repair fund	23,000	19,479
							<i>Inc funds for quinquennial</i>	

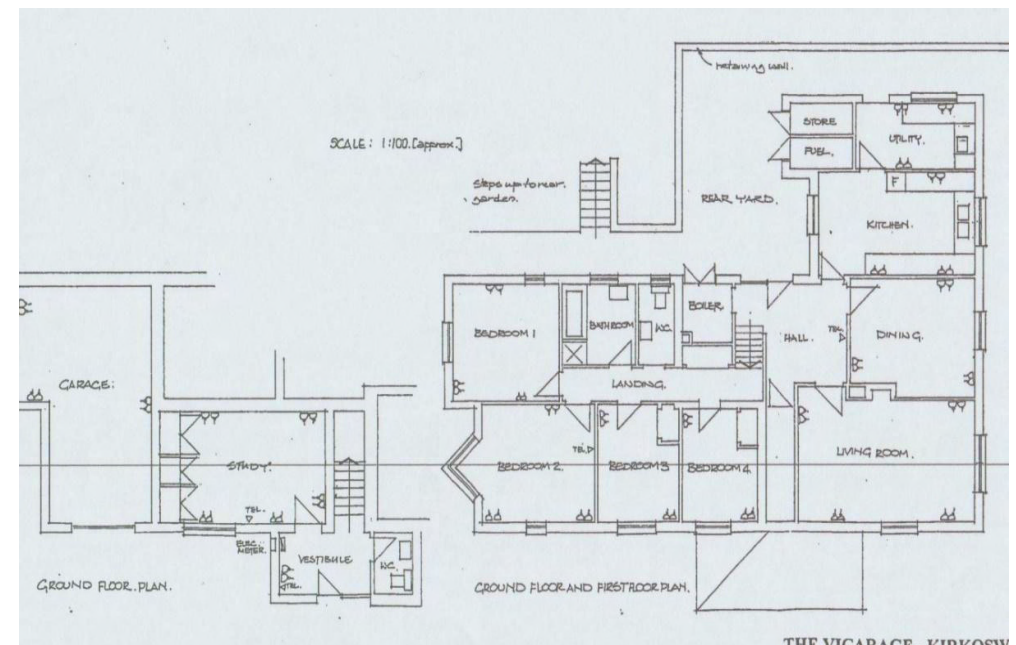
The Vicarage, Kirkoswald

Kirkoswald Vicarage was purpose built in the late 1980s.

It has 4 bedrooms and benefits from a large garden with open views across fields to one side.

It is positioned in a quiet cul de sac off the village square, only a short walk from the shop, pubs and doctor's surgery.

All in all a very pleasant place to live.



THE VICARAGE - KIRKOSW

The Vicarage, Langwathby

The Vicarage in Langwathby is a modern house, built in 2002, with 4 bedrooms (2 with en-suite bathrooms), sitting room, dining room, kitchen, study and conservatory. There is a family bathroom and a cloakroom downstairs.

It has oil-fired central heating and a double garage.

The garden is quite private, and easily managed.

It is situated near the centre of the village, close to the church, shop, pub, and school and only a short walk to the station on the Settle to Carlisle railway line.





Thank you for reading our
East of Eden benefices profile

For more information please contact:

The Ven Ruth Newton
Archdeacon of Carlisle

Email: archdeacon.north@carlisediocese.org.uk

Telephone: 07919 792051

Next step