

A New  
**PRIEST-IN-CHARGE**  
for the Benefice of the  
Barony of Burgh



# The Benefice of the BARONY OF BURGH

Our six parishes lie just to the west of Carlisle, stretching for fourteen miles along the lovely southern shore of the Solway and for up to seven miles inland.

Despite our proud medieval title, we have a very modern shopping-list of things that we would like to achieve:

- ❖ An increased profile for the Church as a welcoming asset within the wider community.
- ❖ Unified, growing, active and confident congregations that embrace a diversity of practice and traditions.
- ❖ Pastoral and cultural support for our schools.
- ❖ The retention of the individual identity of each parish within the benefice and the Mission Community, yet benefitting from the ideas, confidence and innovations that may be generated through these partnerships.
- ❖ A wider, and younger, corps of volunteers.
- ❖ Stronger fundraising and regular giving to restore the levels of the Ministry Offers, to cover mission costs, sustain the buildings, and to support charitable initiatives.
- ❖ Minimising the liabilities and maximising the benefits of the buildings in our care.

We are praying for a new priest who:

- ❖ Takes a central theological position.
- ❖ Understands rural ministry.
- ❖ Is willing to be visible and active in all aspects of our community life.
- ❖ Has welcoming policies on open baptism, and on marriage, and who is inclusive in relation to diversity.
- ❖ Is keen to work with families, children, and schools.
- ❖ Will lead pastoral care, and its oversight.
- ❖ Can be a leader and guide in lay ministry, supporting the aims in our Benefice Mission Action Plan to have a lay team for every parish, and a service in all six churches each week.
- ❖ Will work with interdenominational partners and be a gentle unifying force in communities and congregations.



From the  
**Rt Reverend Rob Saner-Haigh**  
Bishop of Penrith and  
Acting Bishop of Carlisle

*Dear Applicant,*

*This profile will give you a good picture of life and ministry in this wonderful part of Cumbria, which is deeply rural but also close to Carlisle, our wonderful Border city.*

*The Diocese of Carlisle is committed to the God for All vision. Launched in 2015, it is underpinned by a commitment across four denominations in Cumbria (the Church of England, the Methodist Church, The Salvation Army, and the URC) to see God's Kingdom flourish across the county.*

*The vision is based on four values: Follow Daily (helping each other to follow Jesus more closely); Care Deeply (listening to our communities to serve them and to challenge injustice); Speak Boldly (sharing our faith in Jesus in everyday ways); and Tread Gently (seeking to sustain and renew the life of the earth).*

*Mission Communities are the way in which the Church in Cumbria seeks to live out the God for All vision. They are deeply collaborative groupings of churches – between denominations, between clergy and laity, and between different communities – working together to proclaim afresh the gospel to each generation, faithful to its tune but improvising together to create new melodies for our place and time.*

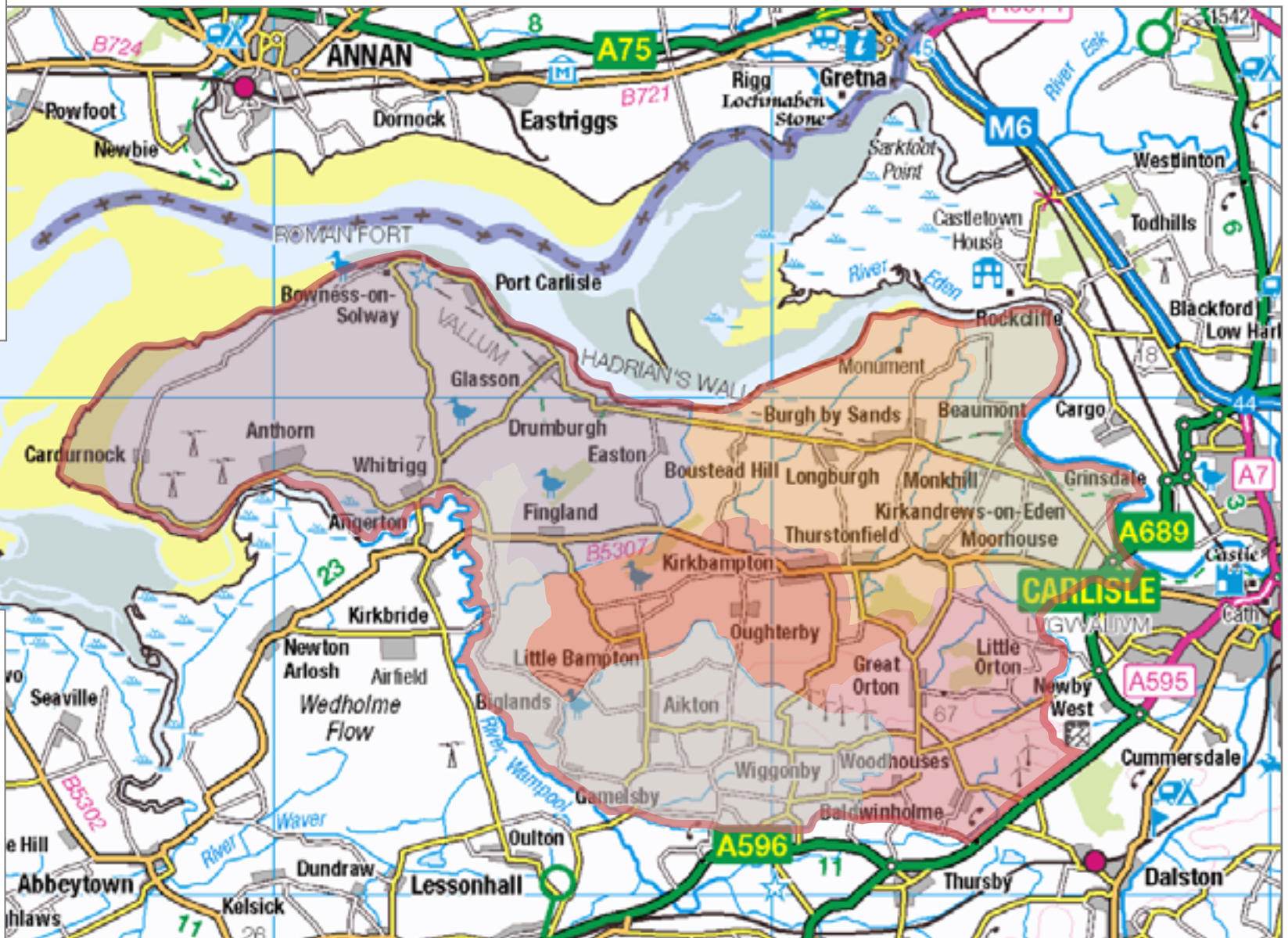
*Initially, this is an interim post for two years. When other surrounding benefices become vacant due to retirement, at this point the Diocese will look at re-shaping the Benefice which could have additional parishes added to it, and additional clergy depending on the resources available. The successful applicant will play a full part in the shaping of this pastoral reorganisation.*

*We are looking for clergy who resonate with this, who love God and love people, who will look outwards into the community in mission, help people grow in faith and who will enable the faith and gifts of all.*

*If this stirs something in you, we'd love to hear from you.*

*With every blessing,*

A handwritten signature in black ink, appearing to read "Rob Saner-Haigh".



PARISH KEY

- Aikton
- Beaumont
- Bowness on Solway
- Burgh by Sands
- Great Orton
- Kirkbampton

# Our BENEFICE

In this profile we have tried to summarise the character of our communities: we believe that there is much unrealised social potential here.

It is an exciting challenge, in which a revitalised church has a central part to play.

It is a lovely place to live. Much of the benefice falls within the Solway Coast National Landscape (Area of Outstanding Natural Beauty), a countryside of saltmarsh, big skies, pasture, and woodland, in which there are seven designated Nature Reserves and part of a World Heritage Site (Hadrian's Wall).

In the southern half of the benefice, it is hedgerows, grazing and small woods that predominate, for we are in stock-farming country, where the focus is on dairy, beef, and sheep.

The villages and many scattered hamlets, about 20 in all, house the population of about 4100, many of whom commute to work in Carlisle.

The older houses are built of limewashed clay, cobbles, or brick, but small clusters of new houses have been built in some of the

settlements closer to the city, bringing in younger families. Another major economic activity is tourism, and here this certainly extends to church tourism which is a quiet force in mission.

The Hadrian's Wall National Trail, which connects three of our churches, begins (or ends) in Bowness; it brings in substantial numbers of domestic and international visitors, and supports many businesses. The new King Charles III England Coast Path will attract even more.

There are six Norman churches (all Grade I or II\*), three chapels, five primary schools (two C of E), seven pubs, seven village halls, and dozens of active groups and clubs that compete for our diaries.

Each parish has a separate PCC (with a lay chair available if required) which looks after

their own budget, the church building, and all immediate practicalities.

At present the determination of mission priorities, the pattern of worship, and training initiatives are all delegated to the Benefice Standing Committee, chaired by the priest, which is composed of officers from all the PCCs.

On fifth Sundays we have a benefice-wide service, rotating the venue. We aspire to have a Benefice Vision, expressing our conviction that we have strong potential to reshape and strengthen our church life; to that end, we have been gradually drafting Mission Action Plans.

In implementing these, the priest will have the support of an active retired clergyman who lives in Anthorn; in addition, a Lay Reader (from Carlisle) assists in Kirkbampton, a lay preacher from Thurstonfield leads a monthly ecumenical

service in Great Orton, and Burgh has a Local Lay Minister and a lay ministry team, some of whom help out at other churches. The lay team at Bowness is restarting. The Rectory is at Burgh (see below).

The Carlisle Rural Mission Community - a group of 17 churches and 5 chapels between Wigton and Carlisle, stretching as far south as the boundary of the Lake District National Park - has yet to become truly established; arrangements in the Carlisle Deanery are under review.

There are two 'parish mags': one for Bowness (which only joined the benefice in 2021), and one for the other five parishes which is distributed free to all households on a bi-monthly basis. As well as detailing church services the magazines play a crucial What's On role.



Thrift at Bowness

Photo: Richard Speirs



Church attendance has been restored after the pandemic – evidence of a resilient core. The figures for 2023 were:

Parish and number on the electoral roll	Average SUNDAY		EASTER		CAROL SERVICE		CHRISTMAS		BAPTISMS		WEDDINGS		FUNERALS	
	2019	2023	2019	2023	2019	2023	2019	2023	2019	2023	2019	2023	2019	2023
<b>AIKTON</b> 24	18	15	18	13	80	60	-	-	1	0	1	0	0	1
<b>BEAUMONT</b> 15	10	13	26	20	-	30	16	12	0	1	0	0	1	2
<b>BOWNESS ON SOLWAY</b> 72	17	19	28	25	45	68	14	17	2	0	0	1	4	4
<b>BURGH BY SANDS</b> 51	22	18	25	34	43	43	72	65	0	4	3	2	5	3
<b>GREAT ORTON</b> 14	11	9	26	18	44	32	18	14	1	0	2	0	0	2
<b>KIRKBAMPTON</b> 18	12	14	26	22	23	30	-	19	1	0	-	-	1	1

Burgh also has a BCP Communion service every Wednesday morning: average attendance 11 in 2019 and 12 in 2023.

Occasional Offices can have high attendance figures. Thus, at Bowness, the 2 baptisms attracted an average of 48, the wedding 132, and the 8 funerals an average of 101.

We have recently taken steps to ease the paths to baptism and to weddings, both of which had become very restricted.





Towards Criffel  
Photo: Richard Speirs

# Our PARISHES

Each parish has a distinctive character and has provided its own description

## AIKTON (pop. 428)

St Andrew's Church is the oldest building in the parish, dating from the 11th or 12th century. Our Sunday Service is held on the 1st Sunday of the month.

We receive help from some younger families in our parish, but we would love to see this grow, along with the number of baptisms in our church, which sadly have fallen away.

We have a strong link with the local C of E Primary School within the parish at Wiggonby.

Many members of our congregation were pupils there, and now their grandchildren, and even their great-grandchildren, attend this friendly and well-performing school. We would very much like to continue and strengthen this link.

Our Village Hall is situated outside the village of Aikton and is locally known as the Parish Rooms. The majority of our fund-raising events are held here, enabling all age-groups to join in. Our Big Breakfast, a very successful fundraising event for the church, was also the chance of a chat with friends and neighbours, especially after Covid lockdowns. We are already receiving bookings for the next one.

We have also held a Hymns and Pimms evening in the church which was widely supported by the benefice. Our congregation is a mixture of local farming families, who have lived in the Parish for generations, and families who have moved to the countryside for a peaceful way of life. Everyone knows who their neighbour is.

Our Parish Council, generously, give us grants to pay for the grass cutting of the Churchyard

and also towards the printing costs of the Parish Magazine. The magazine is delivered by local volunteers to everyone living in the parish.

There is a strong tradition that our churchyard, now so well-cared-for, was frequented by the ‘resurrection men.’ Now our visitors are passing cyclists and walkers who often, on a sunny day, stop for a break and sit on the bench outside the church entrance to enjoy the wonderful view of the countryside. Others come to enjoy the exceptional range of activities at the Watchtree nature reserve.

## **BEAUMONT** (Kirkandrews-on-Eden with Beaumont and Grinsdale) (pop. 424)

The parish consists of the small villages of Beaumont, Grinsdale, Kirkandrews-on-Eden and Monkhill, together with several small hamlets. There are nearly 200 households.

**AMENITIES:** There are no shops or schools - children attend the school in Burgh by Sands and then the secondary school in Dalston – but there is a pub and two Village Halls. The hall in Grinsdale is being used to house a family of Ukrainian refugees. Beaumont Parish Hall, in Kirkandrews, has a children’s playground and a sports field. It is the venue for the Youth Club, WI, Solway Flower Club and yoga classes, regular coffee mornings and frequent talks. Planning permission has been granted for

a new hall and it is hoped that work will start soon.

St Kentigern’s church in Grinsdale was closed and sold by the Diocese and is now being renovated as a dwelling but the graveyard is still open. There is a closed graveyard in Kirkandrews which is maintained by Cumberland Council.

**ST MARY’S:** The parish is served by St Mary’s church in Beaumont which is a Grade II\* listed building and has an open churchyard. A service of Holy Communion is held in St Mary’s on the 4th Sunday of the month. There are also joint services with Monkhill Methodist Chapel, at Harvest, Remembrance, and other occasions. The Carol Service is organised by church and chapel alternately and takes place in the church or the Parish Hall.

Members of the church read the Epistle and Gospel. Volunteers open and close the church every day of the year and there is a rota for flowers to be placed in the church between Easter and October. Coffee is served after a service, providing a chance to socialise.

Although the number of church attenders is low there is a strong sense of community and a willingness to help. A parishioner has recently started “The St Mary’s 100 Club” which has proved very popular; the money raised is used to maintain the churchyard and/or the fabric of the church. Church cleaning is organised by the PCC. Grass cutting is by village residents; the Parish Council gives a grant towards the costs.

**FUTURE VISION AND PLANS:** There are major historical and natural assets in the area which can be used to encourage interest in the church. The Three Solway Churches project

(Bowness, Burgh and Beaumont) has proved very popular with walkers on the Hadrian’s Wall Trail and consequently we have many visitors. The church provides a place of rest, historical significance, and an air of tranquillity in a beautiful setting with panoramic views.

There are opportunities to encourage further collaboration with Burgh by Sands and with the Methodist Chapel in Monkhill: last year the joint Harvest Supper with Burgh and the Methodists was re-started after the pandemic.

**OUR NEEDS AND TRADITIONS:** We attract worshippers from across the Benefice to our 9.30 Holy Communion service. Many less regular worshippers attend the very popular Easter Egg Rolling following the service on Easter Sunday. We are always welcoming to everyone who attends.

## **BOWNESS ON SOLWAY**

(pop. 1044)

Our large parish, at the extreme western end of Hadrian’s Wall, is centred on the compact coastal village of Bowness, built on the site of a big Roman fort. The area includes the RSPB Campfield Marsh Reserve, and Bowness Common, an SSSI and the largest raised mire in England, a haven for a rich diversity of wildlife. The village has long been a centre for Haaf Net fishing, unique to the Solway; an example of the net used can be found in the church.

The parish has five main villages and several smaller hamlets, totalling 575 households. At Anthorn, where there is a sizeable estate of ex-MOD housing, the Village Hall and the Community Association play important roles in social cohesion, while in Port Carlisle the Bowling Club doubles as a social centre.

A close and supportive community, Bowness parish has attracted many artists, including painters, sculptors, potters, and wood-turners who organise an art trail each year. The Lindow Hall, close to the church, provides space for regular community and arts events (including yoga and cinema), a 'warm place' in winter, and bunk-bed accommodation.

Visitors from all over the world come to the village when tackling the Hadrian's Wall National Trail, often leaving their reflections in the church's visitors' book. The late Norman church building was established in the 12th century with additions and adaptations through the medieval period to the 19th century. There is a very good set of 20th century memorial windows. One of the biggest attractions are 75 extraordinary kneelers recently worked by a church sewing group; the examples in the choir and chancel

feature the wildlife of the area and many of the local villages.

We have two Communion services a month and additional lay-led services – for which a team has recently been put together. Thinking outward, the PCC is committed to promoting stronger ties with the small but active Methodist chapel in Port Carlisle as part of our Mission Action Plan. We also wish to re-establish links with the successful and outgoing primary school in Bowness itself. Our greatest challenges are financial ones, so we need to rebuild levels of support in the parish as a whole.

## BURGH-BY-SANDS

(pop. 1253)

The main village grew up along the southern side of Hadrian's Wall; the wider parish encompasses several hamlets, including Moorhouse, Thurstonfield, Longburgh, and Boustead Hill. New-builds have ensured that the population is growing and younger families arriving. Saint Michael's church stands on the site of a Roman fort on the Wall and is much visited; it has some national profile as having been (in the 3rd century) the location of the first African community in Britain, and because – extraordinarily - the body of King Edward I lay in state within the church in 1307 after his death on Burgh Marsh.

Our Sunday service pattern changed in 2021 from two Common Worship Holy Communion services and two Service of the Word (one lay-

led) each month to a single Communion and three gatherings for informal family worship, aimed at those with little experience of church. This move was not consulted on in the congregation or the PCC and proved contentious, attracting some and alienating others. A BCP Communion every Wednesday morning has a consistent following. The lay team is well established and active, making a crucial contribution. The facilities in the church include level access, a kitchen, a loo with baby-changing space, and a new projector, screen, and sound system. A drop-off point in the church supports the Carlisle Foodbank. There is a mission-focused Pilgrim Trail around the church, interpretation panels in the tower, and guides are on duty on Fridays and Saturdays during the main visitor season. Heritage Open Days are always successful, but a trial of contactless donations failed; we will have to revisit the provision of

efficient wi-fi.

There is a weekly prayer group, and another which meets for Bible study. The Mothers' Union for the benefice is based here. Burgh school, which draws many young families to the village, holds its annual Harvest services in the church, and we hope that we can collaborate more in future. A poetry coffee morning in the church welcomes those with dementia. The Methodist chapel at Thurstonfield is within the parish but is much nearer to the church in Kirkbampton, with which it has active links.

The church has been successful in fundraising. In 2019, an appeal to the entire village community for essential work to the church tower yielded over £17,000, and in 2023 we received grants amounting to nearly 60% of the cost of the new AV system. Much earlier, in 2012, The Three Solway

Churches project (Burgh, Bowness and Beaumont) was awarded a total of £93,000 from the Heritage Lottery Fund and the Rural Development Programme for England for church tourism and material for school visits. In Burgh, visitor-friendly improvements to the church building were also funded. Local volunteering was formally valued at £30,000. The annual Christmas Fair, in the Village Hall, is a more modest but important fundraiser for our work, and the 100 Club is restarting.

The village has a pub, a rather infrequent bus service to Carlisle, and a Post Office two days a week. Volunteers ensure that the Village Hall is extremely busy, holding weekly coffee mornings, the parents and toddlers group, the WI, craft sessions, film club, and badminton. There is a well-equipped children's playground, and other outdoor activities regularly take place on the Village Green.

## GREAT ORTON

(pop. 461)

Orton is an ancient rural parish with a central wooded area designated as a Site of Special Scientific Interest. There are twelve farms and agricultural roots remain strong but recent building development has attracted a mix of people of all ages from a variety of backgrounds. We have just over 200 dwellings, half in Great Orton village, and half in the various hamlets. Many residents commute, mainly to Carlisle, Dalston or Wigton. We are fortunate to have retained our village ethos.

### OUR AMENITIES INCLUDE:

- ❖ County Primary School with a rising roll of 40 pupils from the parish and the outskirts of Carlisle. Historically, clergy visited weekly and, following a lapse, we are hoping to rebuild connections. There is a nursery attached to the school.

- ❖ A butcher's shop which also sells groceries
- ❖ A pub, The Wellington Inn, serving pub grub and has adjoining popular Caravan Park
- ❖ The Village Hall with main hall and supper room that provide facilities for meetings and social events e.g. bowling, Pickleball, sewing groups, parties.
- ❖ Children's playground with excellent newly installed play equipment and grassed, ball-game area.

Privately-run amenities within the parish, but outside the main village, include a farm diversification complex with café, shops, swimming pool, conference centre, and a hairdresser; a fish-and-chip restaurant; garden nurseries; kennels; petrol station with Spar shop. Sadly, public transport is sparse, with only one bus per week to Carlisle.

St Giles' Church, founded in 1098, is built of stone from Hadrian's Wall, and is now a Grade II\* Listed building; it is reputed to be the first church built in Cumberland following the Norman Conquest. It is a special place of peace and simplicity to which we encourage people to come for worship, quiet prayer or just to visit. We have an open church policy and welcome all, of faith or none. In common with other ancient churches, we are faced with the challenge of repairs, as identified in the recent Quinquennial inspection.

Our small but faithful congregation, currently averages six to ten people at fortnightly services, alternating between a Holy Communion service and an Ecumenical service led by an Accredited Local Methodist preacher. The older age group predominates and are eager to attract families and younger people. We are a rural parish where the tradition is one of central C of E worship, coupled with

ecumenical worship to cover varying theological needs. We use Common Worship and the Lectionary.

We have one Churchwarden/Treasurer, six PCC members, and an acting secretary. Volunteers play a huge part in everyday church life. We have a regular unpaid organist, volunteer church cleaners, and a churchyard immaculately kept by a parishioner. We are grateful for the financial support of the Parish Council who award a grant towards churchyard maintenance and pay Orton's share of the Parish magazine costs. Our Ministry Offer is paid up to date. Sunday collections are generously given, but now, post-Covid, we need to reinstate our fundraising and outreach activities.

## KIRKBAMPTON

(pop. 494)

Kirkbampton parish is formed of Kirkbampton village itself and the hamlets of Little Bampton, Oughterby and Studholme. Kirkbampton is a village of contrasts: old buildings, a conservation area, and families who have lived here for years, all now interspersed with three new-build estates still under construction, with the new families that they continue to bring. The current population is between 400 and 500. There are three working farms in the village and the quiet roads are sometimes full of a mixture of farm machinery, commuter traffic and large lorries heading for the port of Silloth. Then all is quiet again. We have no shop, no post office and a poor bus service. There are mobile shops that come through and a Post Office van once a week. We do have a good C of E primary school, a busy village hall and of course our

12th-century Grade 1 listed church which has an early William Morris stained-glass window behind the altar which has recently undergone conservation. The church has a good sized, still open churchyard.

When full, the church can accommodate 100 people. We have a good relationship with the Methodist Chapel in Thurstonfield. The church and grounds are kept in good order by volunteers from the village. Our congregation, though faithful, is ageing. Current worship pattern is a lay-led morning worship once a month and a service with Holy Communion once a month. Our service attendance is about 10 to 20. This Christmas brought higher attendance than we expected, and we have had our first baptism in three years this January. We have a volunteer organist and a loop system for the hearing-impaired. We offer coffee and biscuits after each service.



The church is opened daily by a rota of parishioners. We were the first parish in the United Kingdom to host the reconciliation movement LOUDfence. We have struggled financially and have been unable to contribute to the Ministry Offer this year. However, we have had financial advice and help and are hoping to rectify our finances.



What can we say that might bring you, reading this, to consider us?  
Well, we need you.

The parish needs someone to help us reconnect all these disparate parts of our lovely Barony of Burgh.

We are trying hard to reach out to the new and accommodate the old.

Please come and help us.

# Our SCHOOLS

We have two Church of England primary schools, at Kirkbampton and Wiggonby, and three other popular primary schools in Bowness, Burgh and Great Orton. All five of our schools are rated as Good by Ofsted.

## Kirkbampton

Kirkbampton C of E (VC) Primary School is a thriving village school which has around 100 pupils. We draw from a wide community, both within our locality and from further afield such as the outskirts of Carlisle.

We are looking for someone who will be able to support our school to develop its Christian vision of 'Through hope, friendship and compassion we learn together', actively supporting our governing body and delivering engaging and invitational collective worship to pupils from 4 to 11 years of age.

A keen interest in children's ministry in the context of a church school and a willingness to engage with our pupil worship leaders would be very much welcomed as well as making positive relationships with our wider school community of parents and carers.

Whilst we acknowledge some of the traditions of the past, we are very much a forward-looking school and embrace all forms of Christian worship, including the use of prayer spaces.

We can offer enthusiastic pupils who are curious about the world around them and their place within it, a friendly smile, and a welcoming community.

HEADTEACHER:  
Andrea Armstrong

## Wiggonby

A lovely rural school with excellent views of Skiddaw, Wiggonby C of E school is a warm and welcoming school where pupils are supported in striving to do their best and to live life in all its fullness.

We have an excellent reputation within the area and indeed outside of our catchment, with 35% of our children coming from out of catchment area.

Our pupils receive a good education and are provided with a range of quality experiences, which complements our whole-school curriculum.

We have always been well-supported by the vicar and have a strong link with our local church, which we obviously hope will continue.

HEADTEACHER: Andrew Brooks



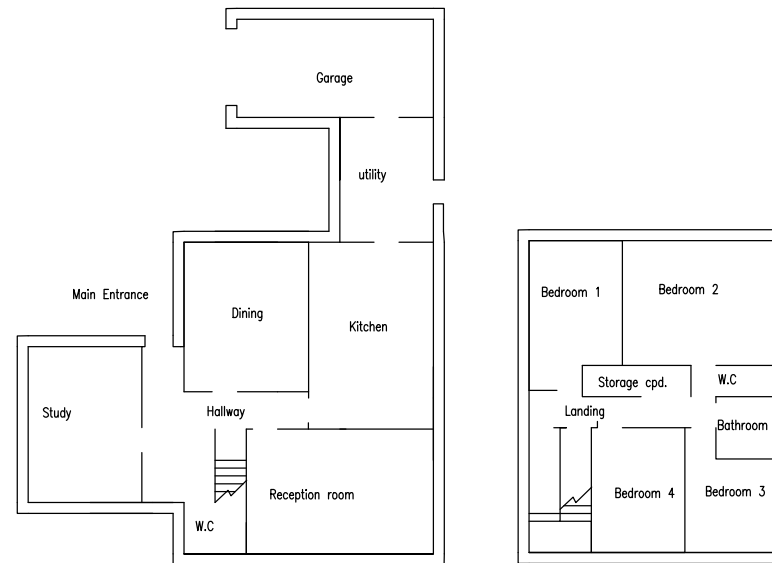
# The RECTORY

Purpose-built in 1984, the Rectory is close to the church in Burgh.

On the ground floor are a hall, two reception rooms, a study, a new kitchen (installed in February 2024), utility room, and a toilet.

On the first floor are four bedrooms, a bathroom, toilet, and a large linen cupboard.

The garden covers 750 sq m, and there is a single garage.



# FINANCE

Ministry Offers have suffered a severe downturn in recent years; in Burgh, for instance, the figure in 2018 was more than double what it is in 2024.

The total contributed by the benefice this year is well below costs:

Aikton	£3,000
Beaumont	£2,400
Bowness on Solway	£6,000
Burgh by Sands	£11,346
Great Orton	£2,370
Kirkbampton	nil.

Most of the buildings are in fairly good order and it is now imperative that the PCCs, guided by the priest, focus on revenue for ministry, inspiring our congregations and communities to return to regular giving and support.

BENEFICE OF THE BARONY OF BURGH CONSOLIDATED ACCOUNTS YEAR ENDING DECEMBER 2022												
RECEIPTS and PAYMENTS ACCOUNTS	Aikton	Restricted	Beaumont	Restricted	Bowness on Solway	Restricted	Burgh by Sands	Designated/Restricted	Great Orton	Restricted	Kirkbampton	Restricted
<b>VOLUNTARY INCOME</b>												
Planned Giving	1960		2460		3994		7146		580		1140	
Open offerings	5108		521		4279		3077		1379		1037	
All other giving/donations	3770	850	1186		852		2787	3888	816	5300	41	
Tax recovered (Gift Aid)	905		849				2852		187	75	230	
Recurring Grants (Churchyard)			1003							500		
One-off grants									4	298		
<b>Total Voluntary income</b>	<b>11743</b>	<b>850</b>	<b>6019</b>	<b>0</b>	<b>9125</b>	<b>0</b>	<b>15862</b>	<b>3888</b>	<b>2966</b>	<b>6173</b>	<b>2448</b>	<b>0</b>
<b>OTHER INCOME</b>												
Fundraising Activities	3406		350				2926				1333	
Income from investments			78		2494			5	0	46		20
Church Activities (Fees)	2787		519		1234		2520	997	1517		1194	
Magazine*					2039							
Holding account					4678							
<b>Total Income for year</b>	<b>17936</b>	<b>850</b>	<b>6966</b>	<b>0</b>	<b>19570</b>	<b>0</b>	<b>21308</b>	<b>4890</b>	<b>4484</b>	<b>6219</b>	<b>4975</b>	<b>20</b>
<b>PAYMENTS</b>												
Parish Offer	1500		2400		8000		10000		2370		2225	
Benefice Expenses			409		900		1826		284		259	
Church running expenses	4092		2128		7152		10140	9759	1768		2695	
Magazine*		850			1273						150	
Mission giving and donations	120						250	1398	488		284	
Cost of generating funds					628				201		115	
Church repairs/maintenance			297					1153	325		2798	
Churchyard			1154							350	616	
Holding account					1246							
<b>TOTAL PAYMENTS</b>	<b>5712</b>	<b>850</b>	<b>6388</b>	<b>0</b>	<b>19200</b>	<b>0</b>	<b>22216</b>	<b>12310</b>	<b>5436</b>	<b>350</b>	<b>9140</b>	
Excess / deficit for year (+/-)	12224	0	578	0	370	0	-908	-7420	-952	5869	-4166	20
Balance as at 1. 1. 22	9584		6647	0	5656	0	26750	32599	5845	8965	6890	
<b>Balance as at 31. 12. 22</b>	<b>21808</b>	<b>0</b>	<b>7225</b>	<b>0</b>	<b>6026</b>	<b>0</b>	<b>25842</b>	<b>25179</b>	<b>4893</b>	<b>14933</b>	<b>2724</b>	<b>20</b>
<b>Investment Funds</b>				<b>13955</b>		<b>32016</b>				<b>6630</b>		<b>1547</b>

\*Bowness has its own magazine

Some of these reserves have been used in 2023 for repairs/maintenance

These are reserves for impending repairs/maintenance

# Pictures from around the parishes

## AIKTON



*Aikton Church*



*Christmas Eve carols*



*Wigganby School in Aikton church*

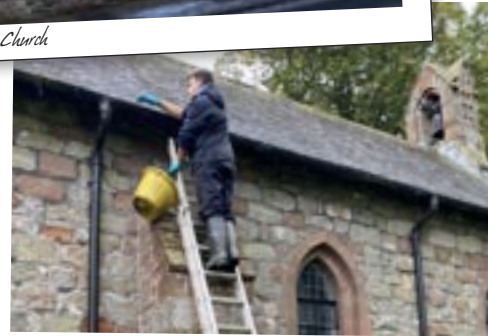
## BEAUMONT



*Egg rolling at Beaumont*



*Beaumont Church*



*Maintenance at Beaumont Church*

## BOWNESS ON SOLWAY



*Bowness Church at sunset*



*Aerial view of Bowness and the church*



*Bowness Church interior*

BURGH BY SANDS

GREAT ORTON

KIRKBAMPTON



*Wedding couple at Burgh by Sands*



*Great Orton Church interior*



*Kirkbampton Church*



*Bishopat Burgh by Sands*



*Great Orton coffee after the service*



*Kirkbampton Church christening*



*Burgh visit of cathedral choir*



*Great Orton Church*



*Kirkbampton Church interior*

#### ACKNOWLEDGEMENTS:

Benefice map based on OS Open Data  
Rectory floor plans by James Associates

#### PHOTOGRAPHS:

Covers: Richard Speirs  
Wedding group at Burgh: Steve Gauld  
AIKTON: Eleanor Graham, Mark Paisley  
BEAUMONT: Wendy Betts  
BOWNESS ON SOLWAY: Simon Ledingham  
Paul Duesterhoft  
BURGH BY SANDS: Keith Clark, Richard Speirs  
GREAT ORTON: Elizabeth Reed  
KIRKBAMPTON: Stuart Kay

