



EAST OF EDEN MISSION COMMUNITY

Parish Profiles for the four parishes in the Benefice of Kirkoswald, Renwick with Croglin, Lazonby and Great Salkeld

- St Oswald's, Kirkoswald
- All Saints Renwick
- St Nicholas, Lazonby
- St Cuthbert's, Great Salkeld



Dear Applicant,

This profile will give you a good picture of life and ministry in this wonderful part of Cumbria, in the heart of the Eden valley.

The Diocese of Carlisle is committed to the God for All vision. Launched in 2015, it is underpinned by a commitment across four denominations in Cumbria (the Church of England, the Methodist Church, The Salvation Army, and the URC) to see God's Kingdom flourish across the county. The vision is based on four values: Follow Daily (helping each other to follow Jesus more closely); Care Deeply (listening to our communities to serve them and to challenge injustice); Speak Boldly (sharing our faith in Jesus in everyday ways); and Tread Gently (seeking to sustain and renew the life of the earth).

Mission Communities are the way in which the Church in Cumbria seeks to live out the God for All vision. They are deeply collaborative groupings of churches - between denominations, between clergy and laity, and between different communities - working together to proclaim afresh the gospel to each generation.

This East of Eden Mission Community is in the beautiful Eden valley offering excellent mission opportunities, real community, with the diversity of worship found in rural villages. It has an ecumenical ordained staff team to be part of. In addition, it is blessed with a large supportive and collaborative wider ministry team and a paid administrator to support the ministry.

We are looking for clergy who resonate with this, who love God and love people, who will look outwards into the community in mission, help people grow in faith and who will enable the faith and gifts of all. If this stirs something in you, we would love to hear from you.

With every blessing

Bishop Rob



ST OSWALD'S, KIRKOSWALD

This is an ancient and beautiful parish, an exceptional place in an exceptional county.



The building itself, with its Romanesque arches and lambent East window, immediately strikes any visitor as dignified and historical, conveying centuries of Christian community. It is surprisingly large and comfortably seats 200 plus.

It has a vibrant and active congregation [electoral roll: c.52], buzzing with interesting and intelligent people of all classes and all ages, albeit with

the usual lean towards the retired and “getting-on-a-bit”, with support from all round the village, and the assistance of a group of ladies full of ideas for raising money to supplement the well-established rota of regular giving. And a very capable organist, who teaches at the local school. Not surprisingly the church is very popular for weddings, funerals, and christenings. As a result the parish is financially sound, well insured, and looking outward, its accounts supervised by a qualified accountant.

The village has a Church of England school, which makes use of the church for lessons, visits and displays, and there was regular contact from our last vicar in weekly visits to the school, which needs to be maintained. The village also has a village hall / Church Institute, which can be, and frequently is, used for social activities.

Outside and surrounding the church is a particularly beautiful churchyard, with some magnificent headstones going back to the eighteenth century, and with more modern ones, which are carefully and frequently tended by members of long-standing village families. It is a recreational area, which is also serving a therapeutic purpose for the bereaved.

Kirkoswald Population 716

The village is a convenient and satisfying place in which to live, with its church, excellent surgery, two thriving pubs in the centre of the village serving fine food, and Kirkoswald Community Shop; the local shop is staffed by volunteers with Outreach Post Office - a

friendly meeting place to enjoy coffee and cakes. There is regular contact with the outside world through the twice-weekly Fellrunner bus service, and connections to the capital via the Settle-Carlisle train service to Leeds.



And it is possible to live in this village and look out at the rolling hills of the Eden valley, watch the geese slowly flying over the River Eden, gaze at the handsome oak trees, which have been growing here for two hundred years and more, and still get out to concerts

and plays at the Rheged centre in Penrith or more urban venues in Carlisle.

Our Commitment is to a historical Christianity, which seeks to get on with and share with all other sects and varieties of religious experience, and still has a place for a good and well-used collection of Books of Common Prayer, which also seeks to modernise and work out an answer to a secular and increasingly God-less society, which has concerns for the old and not-so-well-off, for in-comers, and, from a well-rooted base, for all the many problems of a rootless society.

SUPPLEMENTARY INFORMATION

ATTENDANCE:

Sunday Mornings – 15/25; Easter Sunday – 40; Christmas Day – 90

FINANCE – YEAR TO 31.12.2023

Income £23,715 (including Collections and Donations £10,959)

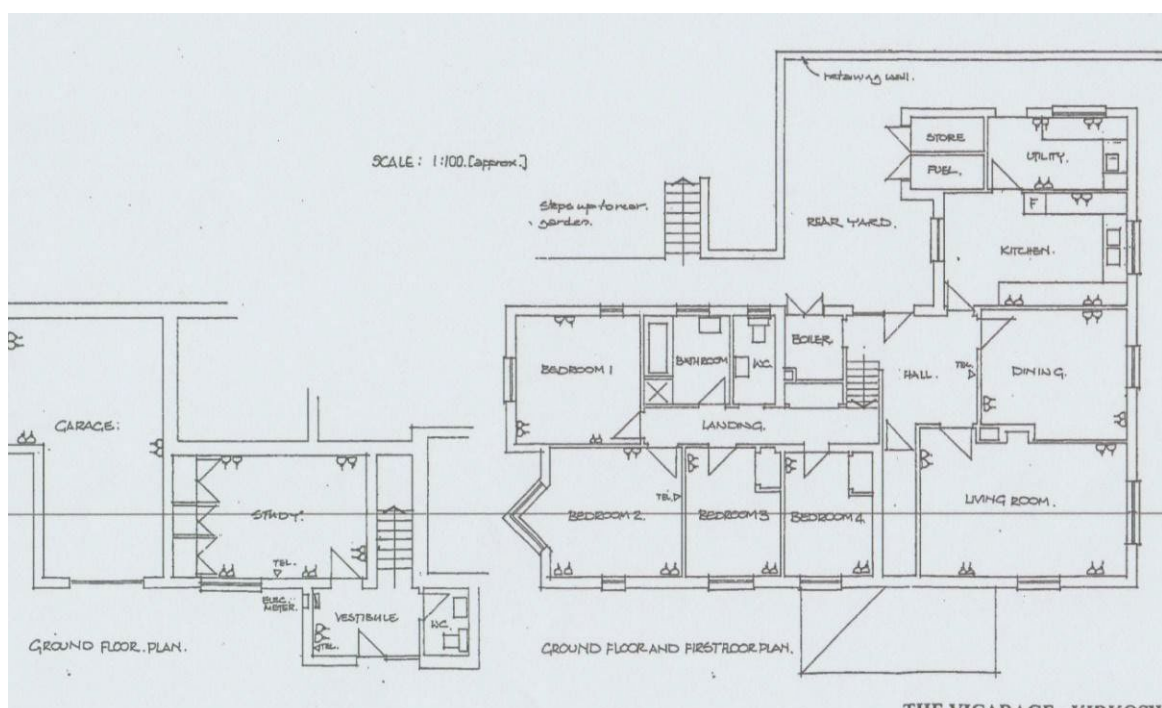
Expenditure: £23,603 (including Parish Share of £15,650)

THE VICARAGE

The Vicarage was purpose built in the late 1980s and benefits from a large garden with open views across fields to one side. It is positioned in a quiet cul de sac off the village square and only a short distance from the Staffield Cricket Club field.

It will be suitably upgraded for the new incumbent.

All in all a very pleasant place to live.



THE VICARAGE - KIRKOSW

KIRKOSWALD C OF E PRIMARY SCHOOL

Kirkoswald CE Primary School is a small school in the Eden Valley with 63 children on roll. We operate three mixed age classes and have a warm, family atmosphere. We serve the villages of Kirkoswald and Renwick and the outlying farming community and we also have several children who join us from out of catchment.

We approach the curriculum from a whole school, topic based approach and want to engender a love of learning for all. With this in mind we do a lot of our learning outside in our special classroom, a parachute canopy, up the common in KO. We have recently been awarded the Green Flag, Eco Schools Award and we are proud of the fact that we are an accredited Adventure Learning School.

Our children are placed in 'Crews' on entry to school and these are, the Curlews, the Oystercatchers and the Lapwings and our behaviour management system is one of positive reinforcement and reward, using the crews.

Our music concerts have become notorious in the local area and we are often singing with our singing teacher Gill, who doubles up as our School Business Manager.

Our school motto is, Explore, Dream, Discover and you can find out more about us from our school website, <http://kirkoswald.cumbria.sch.uk/> where there are lots of photos of the things we do.

All Saints Renwick with Croglin

Summary

- Our church is a small, friendly, welcoming place in beautiful surroundings.
- We see our work very much as serving the local community, who, in turn, are supportive of our work.
- We have strong links to the other parishes in the Benefice despite being the most isolated.
- All Saints has a long history of ecumenical co-operation with our Methodist friends in Renwick – so the development of an Ecumenical Mission Community has been seen as a natural development for us.
- We have an active PCC with many talented people prepared to put time and effort into the work of the Church.

Renwick and Croglin are two small working villages nestling in the foothills of the Pennines in an Area of Outstanding Natural Beauty; the combined population at the last estimate was 278.

There is a strong farming community based in the villages; residents also travel to work in Penrith, Brampton or Carlisle.



All Saints Church in Renwick stands within its own churchyard, well back from the road to Croglin at the northern edge of the village. It is probably the fourth on the site, being rebuilt in 1845 of local red sandstone with a slate roof. It is impressive in its simplicity, well maintained with the help of local craftsmen and our own congregation. The building is not listed.

The church in Croglin was closed in 2012 when the parish was amalgamated with Renwick. The graveyard in Croglin is still open and therefore remains the responsibility of the PCC.

Services have been mainly traditional with 9am Holy Communion and 5pm Evening Prayer with shortened Communion. Now that the Methodist Chapel has closed, a methodist service is held once a month in All Saints. For most services we have keyboard accompaniment for the hymns. If an ordained minister cannot be present then the two churchwardens are prepared to lead a service of either Morning Worship or Evening Prayer, when other members of the congregation will contribute with Intercessions or a Reflection. The 9am service is taken by a worship leader. One member of the congregation is an Anna Friend.

The average attendance at services for the last five years has been 10 or 11. The congregation is mostly elderly but occasionally boosted by local children and their parents. Income is partly from congregational giving and partly from our very active fund-raising activities, some of which we consider as an outreach to the two villages. Our Electoral Roll

stands at 36. We have been able to maintain our parish offer or increase it in line with Diocesan clergy costs; our Offer for 2022 is £7612 and this will be by far our largest expense item.

Baptism has historically been “Open” to all who have come forward; preparation for marriage has been the task of the Clergy; divorced people have been married in Renwick and are made welcome. The PCC supports the appointment of women clergy. We are now part of the East of Eden Mission Community.

Within Renwick there are many clubs and organisations with Church members taking an active role.

Hospitality is an important part of our church life with refreshments being served after special services, concerts and other special events; during the summer, we provide afternoon teas for passing tourists as well as for friends in the village.

As there is no village hall in Renwick, we are hoping to re-order our church as both a place of worship and for community use in general. We plan to replace the roof and install solar panels, upgrade the kitchen and install a toilet. The pews will be removed and replaced with chairs; the pulpit area and the chancel will remain unchanged.

Supplementary Data

Weekly attendance on Sunday is **10** or **11**, whether at 9am or 5pm

Easter attendance – **33**

Christmas attendance – including Christingle on Christmas Eve – **59**

Note: The total population of the parish at the last estimate was 278

Baptisms – sometimes none in a year, **2** at most; there was 1 in 2022 and 1 in 2023

Weddings – sometimes none in a year, sometimes **1**

Funerals – at most **2** in a year

The Accounts Summary will be submitted after our AGM at the end of March

ST. NICHOLAS', LAZONBY

The Village

- Lazonby is a popular village in the Eden Valley within the former Eden District now part of Westmorland and Furness Unitary Authority.
- It is situated on the west bank of the river Eden connected to Kirkoswald on the other side of the river via a fine stone road bridge, built in the 1700's.
- It is 7 miles from the market town of Penrith and 15 miles from the city of Carlisle.
- There are good road connections in all directions with the M6 just 5 miles away and the A66 within 10 miles providing easy road access to other parts of England and Scotland.
- Lazonby has its own station on the Settle to Carlisle railway providing a gateway to the West Coast mainline from Carlisle and a scenic journey to Leeds for connections further south.
- The village has a very well stocked Co-Operative store providing a good range of food, a post office and a cash point for all the surrounding villages.
- The latest census gave a population of 1061 but this is set to increase with the construction of 59 family homes on a new estate.
- The population of the village is a good mix of retired people and young families.
- The local village hall with its refurbished kitchen and bar area is a popular venue for activities ranging from snooker and photography clubs, aerobics, quiz nights, a community run café and amateur dramatics.
- There is a good bowling club, an open-air swimming pool and a large play park.
- The community has been very active in helping those in need. An example was raising the funds and recruiting volunteers to completely refurbish the flat above the village hall to house a Ukrainian refugee family.
- There is further information about the village on the Parish Council website: <http://www.lazonbyparishcouncil.org>.



The Church

- The church, along with the school and the village hall, dates from the mid-19th century built by the then owners of Lazonby Hall and Estate. It is designed by Anthony Salvin and replaces a mediaeval building of which little is known.
- It can seat up to 150 and has benefited from recent alterations to provide a disabled toilet, servery and flexible use areas.
- The building is well maintained and is in a good state of repair.
- The open churchyard is cared for with hopes of creating a wildlife friendly area.
- The church has a well maintained two manual organ. However, organists are hard to come by so an electronic piano, CDs and mp3 files mainly provide the musical accompaniment for the singing.
- The installed sound system and audio loop are effective.
- There are two churchwardens and a small but proactive PCC with secretary, treasurer and safeguarding officer.

- The PCC has put in place policies and procedures for safeguarding, health and safety and fire risk.
- The electoral roll for St Nicholas Church currently stands at 51.
- The church is open during the day for private prayer and is used once a fortnight by the East of Eden Mission Community Choir for rehearsals. This popular choir regularly attracts 35 or more members and holds concerts throughout the area raising funds for the local churches and chosen charities.
- The four bells are rung regularly by a band of ringers with several children learning the skills of bellringing.
- We maintain an active 'A Church Near You' website at: <https://www.achurchnearyou.com/church/12318/>.

Services

- Average Sunday Attendance is usually more than 20.
- We aim for at least one communion service a month in Lazonby and share another communion service with neighbouring parishes in the benefice.
- Where there are five Sundays in the month one Sunday, usually the last, is a united service for the whole mission community.
- At least two services each month are led by one or more of the authorised lay team of worship leaders.
- Once a month there is a less formal "Zest" service, aimed at young families, but suitable for all ages.
- In addition, there is an after school "T-Break" for the younger children once a fortnight during term time involving games, a short drama based on a biblical story and prayers finishing with a small snack. 15-30 children and their parents/guardians attend. This meets in the local playpark during the summer half term.
- A morning communion service is held on the first Thursday of each month at the nearby 'Eden Court' retirement scheme for the over 55's. It is attended by both the residents and others in the village.
- Pastoral visiting of the elderly is provided by the Anna Chaplaincy team supported by the PCC.
- The popular Christingle Service each Christmas always fills the church.

The School

- Lazonby C of E School is a popular primary school and was rated "good" in its most recent Ofsted report.
- It is a member school of the Diocesan Good Shepherd Multi Academy Trust and there are currently just under 100 children at the school.
- The headmaster is a committed Christian and keen to maintain the strong links between the church and school.
- School services are held in the church at the end of each term invariably filling the church with children and parents.
- Two members of the current PCC are foundation governors, and several church members regularly help at the school hearing the children read.
- Collective worship is held every day led by the headmaster or a local minister. The older children are also encouraged to design and lead a service once a fortnight.
- A Christian worker from 'NISCU' regularly visits Lazonby and other local schools to take lessons or collective worship.

Fellowship and Faith Building

- Refreshments are served before or after each service depending on the time of service. Though simple they have strengthened people's links with one another.

- A bring and share lunch is held every two months after the Sunday service.
- Weekly Friday blessings for the local communities are held in someone's home/garden.
- A Food for Thought group meets fortnightly for bible study and prayer.
- Lent and Advent courses are held jointly in conjunction with the mission community.

Hopes and Aspirations

- Increasing the church membership, particularly younger families, via T-Break and Zest or similar activities.
- Maintaining and developing strong links with the local school and our local community.
- Extending home groups.
- Strengthening the welcome and fellowship of the church.
- More lay training and encouraging lay leadership.

Supplementary Information

Service summary (From 2023 Statistics for Mission Return)

Usual Sunday attendance 21 adults and 2 children.

Easter attendance 64 (communicants 49).

Christmas services 180.

There were: 1 baptism, 1 marriage, 1 funeral in church, and 1 funeral at a crematorium.

Accounts summary

Gross income:	£34,500
Regular giving:	£20,300 + gift aid
Total expenditure:	£36,400
Ministry contribution:	£21,300
Total reserves:	£172,000

ST CUTHBERT'S, GREAT SALKELD



Introduction

- Our 11th century church is set in the heart of the village in beautiful surroundings.
- We serve the local community, with strong links to other parishes in the Benefice including our Methodist friends in Great Salkeld and surrounding villages.
- We have a small but active PCC who put time and effort into the work of our Church and maintaining this beautiful historic building.

The Village

Great Salkeld is a small popular village in the Eden Valley situated on the west bank of the river Eden on the B6412 south of Lazonby. It is 6 miles from Penrith and 24 miles from the city centre of Carlisle. There are good road connections in all directions with the M6 giving good North and South connections just 5 miles away and the A66 for East, West connections just 8 miles away.

The population of the village is mainly older or retired people but there are a few young families. The most recent population estimate (2022) was 467 inhabitants

The local village hall is a popular venue for activities ranging from keep fit, yoga, Playgroup and music evenings, also has a community run coffee morning every Tuesday - café Craic. We also have a popular village pub - The Highland Drove - which is valued by the community.

Our Church:

Our old but well cared for 11th Century village Church is right in the centre of our community – a church for the whole community. We have a reputation for offering a very friendly welcome to all.

St Cuthbert's, is Grade II* listed and as one of Cumbria's oldest churches, has a huge history. The first building was probably built about AD 880, one of forty marking the resting-places of the body of St. Cuthbert as it was carried away from Holy Island by monks fleeing from the invading Danes. The current building was erected around 1060. The broad and massive fortified tower, with heavily studded iron door was erected in 1380 as a place of refuge from marauding raiders. We have a peal of six bells (1882) in the tower and the clock

was added in 1892; we also have a fine church organ made and installed by Harrison & Harrison of Durham in 1889, played for us by a very talented organist.

There are services in our church virtually every Sunday, ranging from Holy Communion to Parish led services. As we have WiFi in church we also have the ability to 'live stream' services around the villages.

We have a home Bible Study Group (*Food for Thought*) which is held in the village during certain times of the year and other 'special day' services such as Mother's Day service often held in the village hall or even outside services when the weather is right. Friday morning prayers of blessing for our community take place weekly at 9am, held in the church vestry or in the churchyard in good weather.

Most importantly, we are an 'open church'. Our door is never locked. We have a toilet and a small kitchenette where you will find tea/coffee/milk/sugar. As we have no steps or steep slopes into church we are very accessible.

Being on a 'route' through the Eden Valley, the Church often has visitors during the day, and it plays a significant part in the life of this lively village, standing as an active witness of Christian faith within this close knit, caring community of Great Salkeld.

Standing in a very tidy churchyard, which is still an open burial ground, this well maintained church is in use most Sundays by an average but elderly congregation of 12-16 (from our worshipping community of around 20), attending either Holy Communion, Parish or Methodist led services, mainly at either 9.15am 10.00 which is usually followed by refreshments and fellowship. We also hold a Sunday cafe style service monthly at 6pm.

The PCC has always worked very hard to pay its Parish Share in full; it has managed, in most years, to keep its finances in balance by securing grants where possible and through fundraising events. This has enabled the church to complete a number of programmes of major repairs to our Norman Church and upgrades to the bells, the clock as well as improvements to re-order the rear of the church and install the toilet and kitchenette.

Church Community

Our Electoral Roll stands at 35. We have two Churchwardens, and 7 on the PCC. Two of our PCC are trained and regularly take Parish led services. We also have a few in the congregation who will contribute as Readers or with Intercessions, plus volunteers who provide flower decorations.

We share a bell captain with Lazonby church so we are usually able to have a full team of ringers for our 6 bells, for special services, weddings and funerals.

We do not have a school in the village; the primary children attend Lazonby CofE School. A member of our PCC is a Foundation Governor at Lazonby school.

Our income is derived from regular giving, Service collections and from fund raising activities where we aim to provide fun/enjoyable events that we see as good value for money as well as church outreach. We contribute a high parish offer of £11,000, given the small size of the congregation and the village.

Baptism has always been "Open" to all who have come forward with the ceremony usually taking place during our normal Sunday service. Preparation for marriage has been the task of the Clergy; divorced people have been married in Church and are made welcome.

We were one of the first churches in Cumbria to have a woman Vicar, which supports the PCC stance on the appointment of women clergy. We have also committed ourselves to the principle of a Cumbria wide ecumenical Covenanted Partnership in an Extended Area.

Challenges and Opportunities:

We are an ageing/elderly congregation, with very little new development in the village. We struggle to attract young families to church, nevertheless, given that our main aim is mission, we do try different venues and types of service, as well as being encouraging and welcoming to all who join us.

Our church building is very well maintained, but given its age, this is an on-going and costly task, placing a heavy burden on the PCC and small congregation. Fortunately there is a 'Friends of St Cuthbert's' who are very generous when it comes helping to fund repairs to the church fabric.

Whilst we are a small PCC, who like the congregation are getting elderly, we continue to work hard to maintain our church and raise the funds needed, but each year our congregation/congregation giving drops and the organisation of fundraising falls on fewer people. This makes the task more challenging, nevertheless we continue to do so, as we are very aware of the need to fund both the church and clergy costs.

Some key 'aims':

- Build on successful forms of worship including Lay Led services and Café Church
- Continue to support those with physical, emotional and spiritual needs.
- Develop more opportunities for engaging non-churchgoers, families and children
- Increase opportunities for the spiritual growth of the congregation.
- Work with other denominations and clergy in the wider Mission Community.
- Explore ways of providing spiritual experiences for visitors to the area.
- Build on a church community that is willing to be flexible, progressive and inclusive while recognising past traditions
- Explore the opportunity for all churches (Anglican and Methodist) in the Benefice And Mission Community to cooperate and work together through a 'single PCC, to develop a greater spiritual presence in the area.

Supplementary Information

Accounts summary 2023 (Figures taken from annual return to diocese)

Receipts

Giving including gift aid recovered:	£7708
Fundraising	£4033
Donations	£1762
Other Receipts	£4111
Total	£17614

Expenditure 2022:

Parish share/Payments to Diocese	£11742
Church expenses	£5171
Repairs & Renewals	£3002
Other expenses and donations	£2902
Total	£22817

Balance and investments (31/12/2022)

Legacies & Bequests	£2500 (held as investments)
Investments (CBF)	£51779
Bank Accounts	£34253
Total Net Assets/Reserves	£88532

Service/Occasional Office Summary 2022 (From Statistics for Mission Return)

Usual Sunday attendance: 13

Easter attendance: 32 (communicants 32)

Christmas services: 115 (communicants 35)

Occasional Offices: baptism - 0; funerals in church -2; funeral at a crematorium -1;
marriages -0.