



BARROW
MISSION
COMMUNITY 

DIOCESE OF CARLISLE

MISSIONAL PRIEST- IN- CHARGE, SOUTH BARROW TEAM MINISTRY PARISH PROFILE

2024

 **God
for All**

CONTENTS

SECTION 1: PROFILE SUMMARY

- 3 - Welcome to Barrow
- 4 - The Person We're Praying For

SECTION 2: THE ROLE

- 5 - Person Specification

SECTION 3: GETTING TO KNOW US

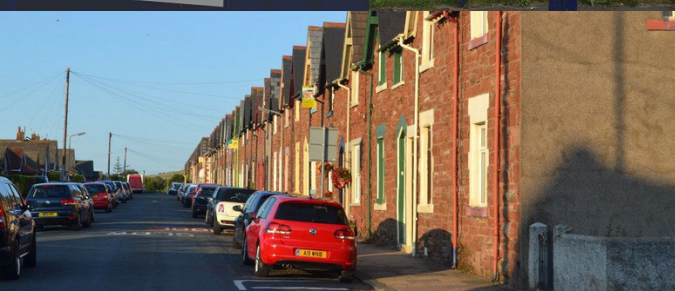
- 6 - About St George's Parish
- 7 - Faith & Mission Through St George's
Moving Forward
- 8 - The St George's Building
- 10 - St George's School
- 11 - Policies & Practice

SECTION 4: GETTING TO KNOW BARROW

- 12 - Getting to Know Barrow
- 13 - Barrow Deanery & Barrow Mission Community
- 14 - Carlisle Diocese

SECTION 5: MISCELLANEOUS

- 15 - Housing
- 20 - Finances





"IT'S NOT JUST THE ABUNDANT NATURAL BEAUTY OF THE AREA, OR THE LOVELY BUILDINGS, OR THE EXTRAORDINARY COASTAL LIGHT, OR THE NATURE RESERVES...

...IT'S BARROW ITSELF, THE FRIENDLIEST, MOST UNASSUMING PLACE I'VE EVER VISITED, LET ALONE LIVED IN.

I NEVER GO ANYWHERE WITHOUT SOMEONE WANTING A BRIEF CHINWAG."

- I SABEL HARDMAN,
ASSISTANT EDITOR, '
THE SPECTATOR'

THE PERSON WE'RE PRAYING FOR...

Do you want to minister amongst 'salt of the earth' people, as together the Church in Barrow seeks to be 'salt and light' in our communities?

Can you build upon good foundations and continue to help us provide welcoming community, meaningful worship, and accessible Bible teaching that grows disciples?

Do you have a deep desire to serve those living in challenging circumstances, displaying a Christian faith that is prepared to get its hands dirty?

Are you ready for the opportunity of planting new Christian communities in a place where roots go deep and tradition is precious?

Can you hold out Christ as grace amongst the grit,
as hope for the hurting, and as true satisfaction
for those unsure as to whom they are seeking?

This role presents **a unique opportunity for a visionary leader to serve as the Missional Priest-in-Charge in South Barrow Team Ministry**. The role will focus exclusively on St George's Barrow in Furness so as **to enable the successful candidate to play a pivotal role in shaping the future of both the parish and surrounding area by spearheading the establishment of new worshipping communities, fostering spiritual growth, and creating a lasting impact in this urban setting**, in turn setting a pattern with potential to be deployed across the town.

'When Jesus saw the crowds, he had compassion on them, because they were harassed and helpless, like sheep without a shepherd.

Then he said to his disciples, "The harvest is plentiful but the workers are few.

Ask the Lord of the harvest, therefore, to send out workers into his harvest field."

(Gospel of Matthew, chapter 9, verses 36-38)





PERSON SPECIFICATION: MISSIONAL PRIEST- IN- CHARGE

Key Skills and Abilities:

1. **Missional Vision:** A clear and compelling vision for mission and outreach, with the ability to initiate and lead the establishment of new worshipping communities, alongside pastoring an existing congregation.
2. **Leadership:** Proven leadership skills with the ability to inspire and mobilize others in pursuit of the church's mission, not least by leading in sharing the Christian faith with others.
3. **Pastoral Care:** Strong pastoral skills and a compassionate heart for nurturing individuals and families, providing spiritual support in diverse and potentially challenging circumstances.
4. **Communication:** Excellent communication skills, both in preaching the Bible and interpersonal interactions, to effectively convey the gospel, connect with the community, and lead people on a journey of change.
5. **Community Engagement:** Demonstrated experience in engaging with diverse urban communities, understanding their needs, and building positive relationships.
6. **Collaboration:** Ability to work collaboratively with existing church members, local stakeholders, and community partners to achieve common goals.
7. **Adaptability:** Flexibility and adaptability in responding to the dynamic needs of an urban parish, with the willingness to explore innovative approaches to ministry.

Personal Qualities:

1. **Spiritual Maturity:** Deep personal faith in Christ and a commitment to living out Christian values in daily life.
2. **Creativity:** A creative and innovative mindset, with the ability to think outside the box in addressing challenges and pursuing mission opportunities, all the while seeking to be faithful to God.
3. **Resilience:** Resilience and perseverance in the face of challenges, maintaining a positive attitude and outlook and seeking the leading and resourcing of the Holy Spirit.

Experience:

1. Demonstrated experience in **initiating, leading and growing worshipping communities.**
2. Prior experience in **urban ministry** or a similar context is desirable.

ABOUT THE ST GEORGE'S PARISH



The parish of St George's is largely residential and is the most populated parish in the Deanery of Barrow. Unsurprisingly it is also one of the highest populated parishes in Carlisle Diocese.

The narrow parish shape stretches from the urban heart of Barrow-in-Furness to the town's greener outskirts.

For example, the western end of the parish is marked by town-centre terraces and covers the top end of Barrow's high street, Dalton Road. According to the Index of Multiple Deprivation, many of these residents would be considered amongst the most deprived in the UK. In contrast, the eastern end of the parish consists of the owner-occupied suburbs of Holbeck and Roosecote, among some of Barrow's more expensive dwellings.

The parish's southern boundary runs alongside the Buccleuch and Cavendish Docks, now owned by Associated British Ports, with the former used by BAE Systems and the latter serving as a reservoir. The northern boundary takes the parish up to Barrow Park, a Grade II Historic England park and the site of the popular Barrow Park Run and home to a boating lake, mini railway, skate park and Leisure Centre.

The church of St George itself is located at the western end of the parish, located in the historic centre of the town and adjacent to the old dock railway. Barely a minute's walk from the doors of the church is St George's School, which will be covered elsewhere in this profile.

Within the parish, there are a number of other churches: Sacred Heart RC; Ramsden St. URC; Spring Mount Christian Fellowship; Emmanuel Community Church.

St George's Parish (church located with diamond):

2011 Population: 14,934; Area: 1.4 sq. miles;
Deprivation rank: 475

*All data accessed from arcgis.com
Deprivation rank: 1=most deprived, 12,307 = least deprived*

FAITH AND MISSION THROUGH ST GEORGE'S - MOVING FORWARD

This new role represents a pivotal shift from a traditional 'vicar' maintaining existing services to a visionary missional approach that sees the potential beyond the current walls of the church.

We see at least three particular opportunities to explore starting new worshipping communities:

- building on our existing partnership with St George's School, engaging local families with the gospel, a focus that is covered elsewhere in this profile.
- the Marina Village development, a 26-hectare site which is just metres from St George's church, upon which 550 new homes are being planned.
- serving local needs in the town centre, as we partner with others across the Barrow Mission Community.

Alongside these, there is a need to revive, nurture and pastor the existing St George's congregation. That said, the PCC also recognise the need to ensure a dynamic and inclusive future for St George's that embraces the spiritual needs of the developing wider community.

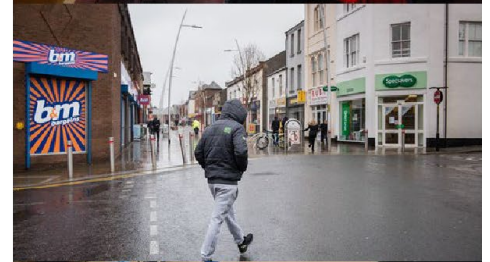
St George's is formally connected with a neighbouring parish, St Aidan's, together forming the South Barrow Team Ministry. In order to give focus and time for mission amidst the opportunities above, this new role will not oversee St Aidan's, and instead ministry and mission there will be overseen by others.

Recently, Christian worship, discipleship and outreach has included:

- a weekly pattern of 10.30am Sunday worship, including joining with St Aidan's once a month for a joint service (in the most recent vacancy this increased to two alternating monthly joint eucharists).
- the style tends to be warm, traditional, but open.
- at all services a sermon/talk expounding a Bible passage in an accessible way, with the aim of helping people grow in understanding, faith and spiritual maturity.

Previous ministries have included:

- a popular monthly Messy Church (c. 2013-2018).
- midweek groups for Bible-study, prayer and sharing lives.
- a monthly 'Real Lives' breakfast in the church hall with an interview.





THE ST GEORGE'S BUILDING

St George's (St George the Martyr) is a historic building that is much appreciated for its place in the lives of many in our town, past and present. Built in 1859-61 at the suggestion of one of Barrow's 'founding fathers', Sir James Ramsden, it is the oldest church in Barrow and was designed as the parish church for the developing town. Over the next few decades, as the town rapidly expanded, the town's geographical centre also shifted, leaving St George's to the periphery.

However, St George's is still regarded as the civic church for Barrow-in-Furness and is a Grade II listed building. A number of annual services provide a focal point for the wider community: the St George's Day Parade with the Duke of Lancaster regiment; a Civic Service with uniformed organisations; and our popular Family Christmas Eve Christingle.

The church has been re-modelled with a Church Hall now in place of the North Aisle. This Hall is used extensively by community groups, including three dance groups and Narcotics Anonymous, and rented for parties.

The main building comprises of Nave, Sanctuary, the Ramsden Chapel (added in 1883), Vestry, Foyers, Porch and Hall. Ancillary rooms include a modern Kitchen (connected to the Hall and renewed in 2017), toilets, a meeting room and storage area. The building is constructed in local slate with red sandstone quoins, window surrounds, plint course and parapets. The pitched roof is covered with local slates and the Tower is finished in stone flags.

Situated in an elevated position, the church is accessed to the main door via steps with a large ramp to assist disabled access. In 2013 the lighting in the church was renewed and a new sound & audio/visual system installed. In 2018 significant work was carried out to replace & enhance the heating system. Internally the church is therefore in good order, though externally there is a requirement for renovation and restoration of the sandstone and slate.





ST GEORGE'S C OF E PRIMARY SCHOOL

As we imagine the possibilities of new worshipping communities within the parish, St George's School is right at the centre of those prayers and hopes, being one of seven primary schools in the parish.

St George's C of E School provides friendly, wholesome Christian education for 254 primary school-aged children in the heart of Barrow-in-Furness. Families in the local community may face a number of social challenges, and so our vision, rooted in Jesus' promise of 'life in all its fullness', is all the more precious. As such we seek the growth and flourishing of all, building a culture of equity in learning and opportunity.

An extensive 2011 school refurbishment has produced a fantastic teaching & learning environment. Ofsted acknowledged that St George's continues to be a 'good' school (2019, 2014), whilst SIAMS also graded the school as 'good' (2023). Above all, we aim to make St George's School a happy place, where children will want to be, where personal strengths are celebrated and an education is tailored to individual needs.

There has been a good partnership between school and church in recent years. The school now regularly holds special services and events at church, including weekly 'Praise Assemblies'. Previous clergy have been well received in the school. One child commented, "I like it when the vicar comes in. They tell us stories and it is fun." The church has a foundation governor and it is expected the successful applicant will also be a member of the governing body.

As we prayerfully dream of the potential through this Missional Priest-in-Charge role, we intend for the person God calls to have the time to invest and develop important relationships in and through the school community. Previous iterations of this have looked like a Messy Church and the beginnings of a Toddler Group, but we are excited for the prospects of engaging with local families in a Christ-centred, transformative and inclusive manner.





PCC POLICIES & PRACTICE

Safeguarding:

The PCC of St George's Church formally adopts the House of Bishops policy, 'Promoting a Safer Church'. The PCC and the incumbent have a duty of care to ensure the protection of the vulnerable in their church community.

Baptism:

Baptism enquirers are currently invited to attend a Sunday service, before formally applying for baptism. Preparation is arranged and conducted by the clergy. Baptisms are popular across Barrow, particularly at St George's due to the historic nature of the church building. It has become our practice to have a monthly baptism service at 12.30pm at St George's most months during term time.

Marriage:

On average St George's has two to four weddings per year, as well as marriage renewals. Marriage Preparation sessions are conducted by the clergy, although in recent years we have run a Deanery-wide Marriage Preparation Morning, which has been well received by couples.

Confirmation:

We typically have one Confirmation service each year across the Deanery.

Children & Holy Communion:

Whether or not they are confirmed, children can receive Holy Communion in both churches at the discretion of their parents/carers, having received appropriate instruction.

Priests (Ordination of Women) Measure 1993:

The PCC has not passed any resolutions under the above measure and in our recent history have had a number of female clergy connected with the parish.



GETTING TO KNOW BARROW

'Where the Lakes meet the sea...'

We love our unique town. It's small enough to care, but big enough to count. Being set apart on the Furness peninsula, we're a town that's learnt to be independent. We are the second-largest centre of population in Cumbria, yet there's still a strong community spirit and sense of local pride.

Barrow only developed as a town in the nineteenth-century, as the centre of a rapidly-expanding mining industry, and yet there is a rich history to the Furness region. Barrow has two English Heritage sites: Furness Abbey (c. 1125), with stunning well-preserved ruins, and Piel Island, with an enchanting castle just a short ferry trip from the mainland.

Barrow's focus later shifted from mining to ship-building, and for the last 100 years this has been chiefly centred around the designing & construction of Royal Navy submarines, now undertaken through BAE Systems, the town's main and growing employer. Barrow is a town in development, with all sorts of spin-off industries & technologies.

Barrow is also home to Furness General Hospital; Furness College (FE & Sixth-form); 27 primary schools; and 4 secondary schools. Work has recently begun on a Barrow Learning Quarter, providing a university campus adjacent to the BAE Systems Submarine Academy on Barrow Island. Sport is a big player in the town, with countless amateur clubs and groups, as well as Barrow AFC (EFL League 2) and Barrow Raiders (RFL Championship).

Barrow is surrounded by stunning beaches and coastal vistas, and the neighbouring Lake District is easily accessible (Windermere and Coniston are less than half an hour away). The neighbouring historic market towns of Dalton-in-Furness and Ulverston can be reached with a short drive.

BARROW DEANERY & BARROW MISSION COMMUNITY



Barrow Deanery is one of eleven deaneries in the Diocese of Carlisle. It is the smallest *geographically* (being comprised of the whole town), but the second largest *numerically*, with a population of 67,400 in the 2021 census. It consists of eight parishes: St Mark's; St Mary's (Walney Island); St John's (Barrow Island); St Paul's; St James'; St Francis'; St Aidan's; and St George's. Alongside these traditional parishes, we also have Barrow Network Youth Church (NYC), which meets in various locations, part of the Diocese's NYC strategy.

At present the Deanery chapter includes the five stipendiary clergy posts (including this vacancy), one self-supporting Associate Minister; two Curates (one self-supporting and one stipendiary), a Network Youth Minister, and a Pioneer Enabler. The role of Rural Dean is currently held by the Team Rector of the North Barrow Team (St James and St Francis).

Along with churches from other partner denominations, together we also form the Barrow Mission Community (BMC), a network of churches seeking to work together and think more strategically about how we use our resources for mission, as apart of the Cumbria-wide *God for All* initiative (see previous page).

Representatives from these churches first began meeting in 2014, and we were formally commissioned as a Mission Community in April 2019. The BMC is led by two joint leaders, Rev. Robin Ham (an ordained Anglican) and Rev. Martin Cooper, the pastor of Abbey Road Baptist Church.

A strong history of churches working in mission & evangelism has included two 'Believe in Barrow' missions (2015, 2017); the development of a Food Bank (2012); and a night-time industry initiative, Street Angels (2017).

The South Barrow Missional Priest-in-Charge will play an active role in the Barrow Mission Community and, as indicated elsewhere, will help shape the landscape of ministry and mission town-wide. A number of parishes may need to explore pastoral reorganisation.



CARLISLE DIOCESE

Our vision as a Diocese is encapsulated in the phrase, 'God for All', and is a shared ecumenical vision for our county of Cumbria, held by four partner denominations and companion churches. Central to our vision are four key themes: follow daily, care deeply, speak boldly, tread gently.

Carlisle Diocese includes 240 parishes across Cumbria, from St George's in the heart of urban Barrow, to the west coast of Cumbria, to the border with Yorkshire, and tourist hotspots such as Ambleside, alongside the city of Carlisle and market towns like Kendal and Ulverston. These parishes are grouped into 35 mission communities, which also include ecumenical churches and fresh expressions.

Carlisle Diocese includes 351 church buildings and 105 church schools, and is usually led by the Bishop of Carlisle. As there is currently a Vacancy in the See of Carlisle, the Rt Rev. Rob Saner-Haigh, suffragan Bishop of Penrith, currently leads the Diocese.

The Diocese also includes the Northern Mission Centre, a collaboration between God for All and Church Mission Society to support creative and innovative mission. We are pioneering at heart, and seek to support both time-honoured and fresh expressions of church.



God for All



Follow Daily **Care Deeply**
Speak Boldly **Tread Gently**



HOUSING

It is expected the Incumbent will live at 98a Roose Road, one of two neighbouring properties owned by Carlisle Diocese. These are relatively new properties, built in 1989 on the site of the old Victorian Rectory and located adjacent to the site of a previous church, St Luke', now demolished.

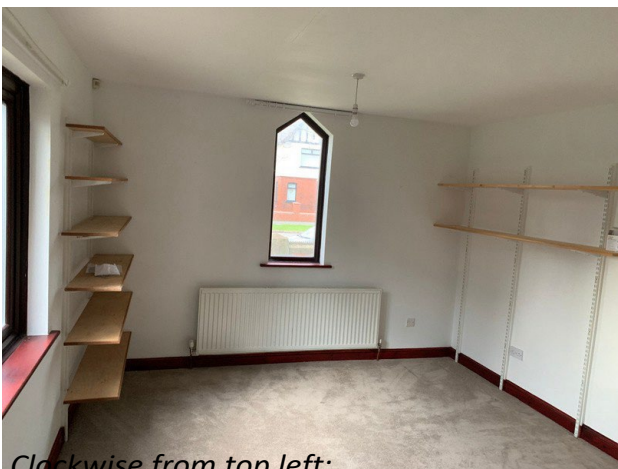
Their position is central in St George's parish. Each large property has a living room, dining room, and kitchen, with a door that separates the living area from the hallway, to which is connected the cloakroom and spacious study. Upstairs there are four bedrooms, a bathroom, a shower room and a toilet room. There is also an adjoining garage, utility room, and gardens surrounding the house.



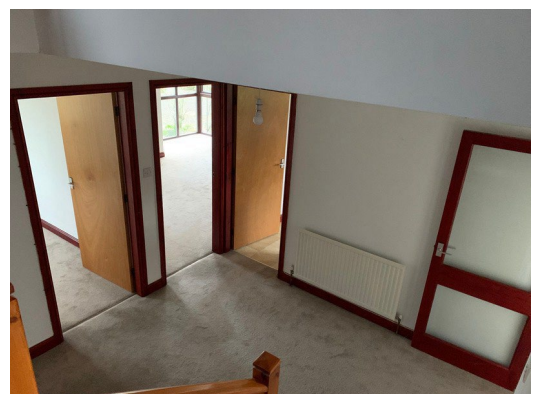
*Top: 98 Roose Road from the road;
Middle: Garage at the rear, accessed by side road to driveway;
Bottom: Back garden & driveway*



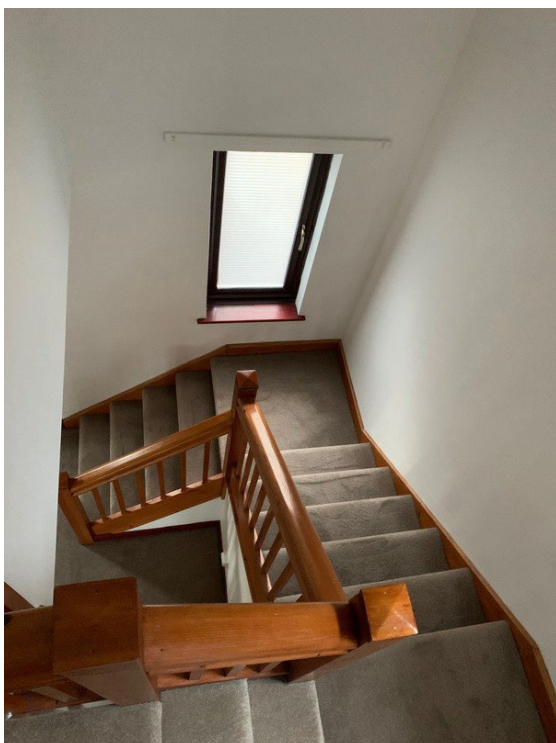
*Clockwise from top left:
Utility corridor with access to
garage & kitchen;
Garage;
Kitchen from utility corridor;
Kitchen from hall.*



*Clockwise from top left:
Living room from window;
Living room from hallway;
Dining Room;
Study;
Study from doorway
Downstairs toilet, adjacent
to study;
Hallway from stairs*







*Clockwise from top left:
Bedroom 2;
Bedroom 3;
Bedroom (master
bedroom);
Bathroom toilet 2;
Stairway*



FINANCE

Almost ten years ago Carlisle Diocese moved from a Parish Share to a Parish Offer System, in which each parish and therefore each Deanery/Mission Community pledges an amount to the diocese for the coming year. In 2022 St George's pledged and gave £30,000.

Planned giving at St George's in 2022 came to £18,380 and open plate collections came to £3,560.

In recent years St George's have run a 'Fit for Purpose' giving programme in order to undertake building development. In 2018 St George's raised £32,000 through specific giving from the congregation for an internal heating project, along with external grants.

St George's also gave £60,000 towards the development of a neighbouring church in the Deanery, St Aidan's. This came from the sale of St Luke's and St Perran's, two former churches that were amalgamated into the St George's parish in recent years.

St George's receives a substantial part of its income through hall lettings, which was £12,000 for 2022.

St George's PCC has recently sold a small terraced property for £65,000, with some of the funds allocated to underwriting the parish offer made for 2022 and 2023.

The financial statements of the PCCs have been prepared on a receipts and payments basis in accordance with the Church Accounting Regulations 2006 and the Charities Act 2011.