

Three Rivers Mission Community

Mission Community PROFILE April 2024



Diocese of Carlisle
www.carlisedioocese.org.uk

PROFILE CONTENTS

Mission Community Overview

Rationale	3
Location	5
History of the Team	5
Ministry Team	6
What the Mission Community has to offer	7
Our Hopes for our new Colleague	8
Life in the Mission Community	9
The Vicarage	9
Church Life	9
Media	10
Finance/Statistics	10

Overview of the Parishes and Churches

Brampton St Martin and Methodist Church	11
Castle Carrock	12
Crosby on Eden	12
Cumrew	13
Cumwhitton	13
Farlam	14
Gilsland and Methodist Church	14
Hayton	15
Irthington	15
Lanercost with Kirkambeck &	16
Walton	16
Nether Denton	17
Scaleby	17
Talkin	17

MISSION COMMUNITIES – The Way Forward (Our Rationale)

The Diocesan Vision centres on four key values: The Mission Action Plans (MAPping) that we are developing in each of our Churches have these priorities at their heart

GOD FOR ALL



Follow Daily **Care Deeply**
Speak Boldly **Tread Gently**

Follow Daily: We will help each other to follow Jesus more closely, seeking to grow as his disciples in all aspects of life.

Care Deeply: We will listen to our communities and respond in loving service, seeking to challenge injustice and oppression : to pursue peace and reconciliation

Speak Boldly: We will share our faith in Jesus Christ seeking to connect with everyone.

Tread Gently: We will seek to sustain and renew the life of the earth

One of the things that makes our Vision and Strategy of 'God for All' different and exciting is that we are completely committed to working together ecumenically, believing that alongside our Mission Community strategy this is the best way to grow new disciples and deepen the faith of those already in our Churches.

In 2011 Cumbria was named as England's first Ecumenical County with a formal partnership between The Anglicans, Methodist Church, the United Reformed Church and the Salvation Army. This is not to exclude other denominations, indeed here in this Deanery of Brampton we walk closely with our Roman Catholic brothers and sisters and those in the Independent Free Churches.

The formation of Mission Communities is a new way of looking at growing the Kingdom of God, so that people all across Cumbria will know the transformative love of God in their lives. Not simply because there are fewer ordained trained ministers, but genuinely looking at what Church should be and the Mission we are called to carry out. Not simply to work together but actively collaborate and share the gifts we have with one another, to build up the body of Christ and to reach out to our communities. We recognise that we are often short of enough resources in our small rural churches to undertake all that we believe God is calling us to do, but that together we can achieve some amazing things that we would not be able to do on our own.

Here in Brampton Deanery we have four loose groupings of Benefices, some of which have already launched as Mission Communities. However, we have an even more exciting vision of coming together as one Deanery Area Mission Community. We are still discerning what this will look like and how we will work together. There was an agreement made in 2023 that we would consult and explore how this could look and function. The current Mission Community (MC) Leader of the Three Rivers MC has been tasked in the role of Mission Community Enabler to develop a possible strategy for the Deanery alongside developing their own Mission Community

This new team member, who will be of incumbent-level status, will be expected to help in this task, but more particularly, initially to work within the Three Rivers Mission Community to release the MC Leader from several parish responsibilities. Her post is an interim one (2 years) to help deepen and grow relationships and mission in the Three Rivers MC. Also, to take forward the work already started in the Deanery to find a common vision, to enable a new way of working that will forge new relationships and enable Churches to grow. Time needs to be released for this. It is hoped that this post will develop so that the designated person will be able to be appointed as the Mission Community Leader, (with an appropriate interview process) when the current post holder retires.

The person appointed will be licensed as Associate Priest in most of the Benefices of the Deanery; this is in order to underline the collaborative and Deanery-wide nature of the appointment and you would be expected to offer your particular gifts across the Deanery area for a proportion of your time. Licensing would be to the following Benefices: Arthuret with Kirkandrews on Esk and Nicholforest; Eden Gelt and Irthing; Home Eden and Wetheral with Warwick; Lanercost, Walton, Gilsland and Nether Denton; Rockcliffe and Blackford.

Brampton Deanery is situated in the north east of the Diocese of Carlisle and covers a large area from the Eden Valley in the middle of the county to the far north of the county bordering on Scotland to the north and Northumberland to the east. This is Hadrian's Wall Country. The parishes are generally small and fairly widespread, this makes the sharing of parishes for incumbents fairly difficult, as distances to be covered are obviously greater than in an urban setting. Nevertheless, the deanery is committed to evaluating its resources in its desire to see the growth of God's kingdom, despite the geographical challenges we face. As a predominantly rural deanery we will be exploring how we can encourage one another to be positive about who we are as God's people, despite often being small in number. There continues to be a focus on vocation, ministry and training, not least in determining how clergy and laity can be enabled to develop confidence in mission and outreach.



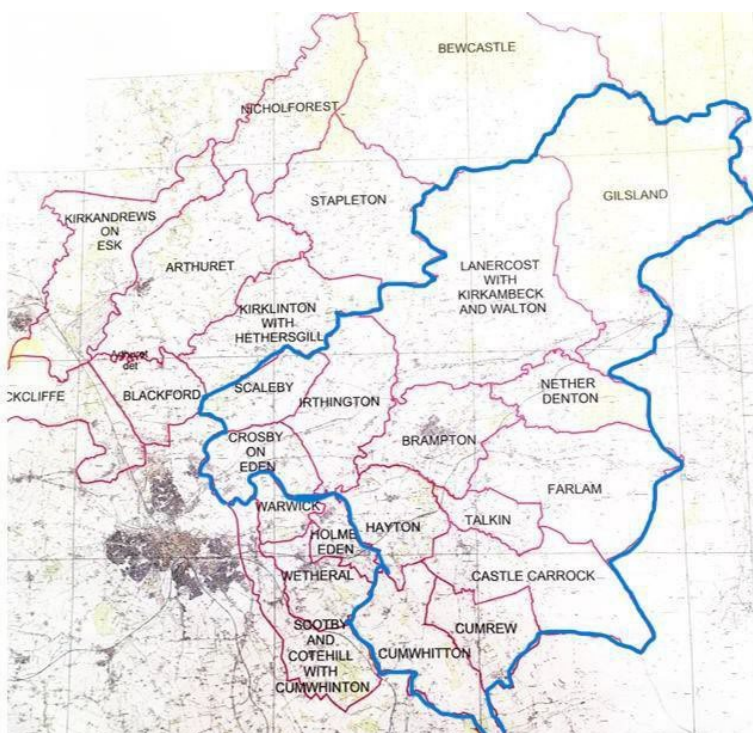
The Three Rivers Mission Community

Who are we?

We are 17 congregations sharing and exploring our Christian faith together. Developing what it means to be a Mission Community in our town and villages around the Irthing, Gelt and Eden Rivers in North Cumbria

LOCATION

The Mission Community is currently made up of the Benefice of Eden Gelt and Irthing with the Benefice of Lanercost, incorporating the Methodist Congregations of Brampton, Gilsland and Walton. Comprising 14 Anglican Churches and 2 Methodist, and Network Youth Church.. Apart from the Market Town of Brampton, they are all small rural parishes in the North East of the Diocese. It consists of the area between the Pennines to the East and the Scottish border to the North. The main road links are the A69 between Carlisle and Hexham, giving access to Northumberland, Newcastle and the East coast, and the A689 to Carlisle, and beyond to the West coast. The M6 is quickly reached giving access to Penrith and Kendal going south and Gretna going North.



HISTORY OF THE MISSION COMMUNITY

The Eden, Gelt and Irthing Team Ministry was formed in 2001, and named after the three rivers which flow through the parishes. The Lanercost Benefice was formed in 1999. Canon Patricia Rogers joined as Team Rector July 2023, and as Mission Community Leader of the larger Mission Community. Also tasked with exploring and enabling a Deanery Mission Community to develop. Team Vicar, Canon Edward Johnsen joined the Team in 2006 and in 2019 took on the role of Rural Dean. Rev Angela Hughes came in 2018 as House for Duty priest. During the Covid pandemic the Benefices launched as a Mission Community, but never really functioned as such and are now working towards developing sufficiently to be 'commissioned' as one.



There are 16 Church buildings in the team in regular use, with a further two redundant Churches where services are held annually.

Currently each parish runs its own business and has its own PCC/Council and there is a Mission Community Council with up to two representatives from each Parish and Methodist Church. As we move to appoint a part time Administrator we are also in the process of making a CIO (Charitable Incorporated Organisation) that will handle much of the common administrative matters and the common finances.

In February 2024 it was decided by a consensus to call ourselves the 3 Rivers Mission Community – a new identity as we go forward together.

THE MINISTRY TEAM

The Ministry Team meets regularly and currently consists of :-

- Team Rector - Mission Community Leader
- Team Vicar (who is also Rural Dean)
- One Licensed Reader
- House for Duty Priest
- Methodist Minister
- 6 Retired Clergy with Permission to Officiate
- Network Youth Church Leader
- *YOU – to be licensed as Associate Priest (with incumbent status)*

There is also an Emeritus Lay Reader; who will occasionally help with services, as well as a growing number of lay people who exercise a variety of gifts including leading worship and pastoral ministry. We are seeking to further develop the use of these gifts and encourage the participation of more lay people in all areas of ministry. A Pastoral Visiting Team is being planned, and a course to train Worship Leaders.

The wider Ministry team consisting of the Methodist Minister, Network Youth Church Leader, House for Duty priest, Rector and Vicar meet monthly for prayer and coordination of ministry. All those licensed (PTOs and Reader) meet every two months for fellowship, support and updates. The Rector and Vicar meet on a Monday for Prayer and discussion of business.

There is Morning Prayer on four mornings a week and Evening Prayer on two evenings in various Churches around the Team and Communion on a Wednesday in three venues, which clergy and laity attend according to circumstances. None of the parishes has passed either Resolution A or B from the Priests (Ordination of Women) Measure 1994.

Across our Churches we give to many agencies and missions both home and abroad, including the Foodbank, Christian Aid, CMS, World Vision, USPG, and Carlisle Key.

WHAT THE MISSION COMMUNITY HAS TO OFFER

- A widespread rural ministry with all its joys and challenges
- A ministry in a beautiful part of North Cumbria
- Colleagues who are open and supportive of one another
- Opportunities to minister among a wide variety of individuals from different backgrounds
- Pastoral opportunities through funerals, baptisms and weddings
- Opportunities to participate in worship of many styles.
- Opportunities to work ecumenically within the area
- Opportunities to help develop ministry within the primary schools, senior schools, and Network Youth Church, including leading assemblies, and supporting staff
- To have involvement with the local communities at social and community activities
- To be part of an exciting development of the Mission Community strategy in this area within the Diocesan vision of 'God for All
- Opportunities to try out new ideas and to be able to use your gifts across the Deanery
- Encouragement to continually develop your personal and spiritual life



Hadrian's Wall towards Lanercost

Our hopes for the new Ministry Enabler

- We are looking for someone who will have a deep personal Christian faith, be able to expound scripture and help people grow in their faith.
- Someone who will be able to work collaboratively with all the clergy, ministers, pastors and lay people within our Ecumenical Team
- Initially to support the Team Rector in their role in exploring the possibilities of a wider Mission Community within the Deanery.
- That you will be able to enjoy worshipping in a variety of styles, including contemporary and BCP.
- That you will fully embrace and be excited by the Diocesan ecumenical 'God for All' initiative which describes the vision for helping everyone in Cumbria discover more of God and God's purpose for their lives.
- To help establish and grow Mission Community as it develops in the Deanery
- To have a desire to work with and develop the gifts of laypeople in each of our churches.
- That you will have particular gifts which you will be able to offer over the wider Deanery area
- That you are someone who loves working in and with the people of a rural area.
- It is essential to be a car driver



Talkin Tarn

LIFE IN THE MISSION COMMUNITY

The combined population is around 10,000. The main industries located within the mission community are agriculture and tourism related but many people travel to work outside the area.

There are many hotels as well as a large number of places offering Bed and Breakfast in addition to several holiday cottages. Lanercost Priory and St Martin's Brampton are tourist attractions in their own right with thousands of visitors a year.

There are five Church Primary Schools and four Community Primary schools as well as a large Secondary School in Brampton. Clergy have close involvement in the Church schools and all of the Community Schools. The Network Youth Leader goes into the High School most days and takes the lead in youth work in Brampton



Brampton Moot Hall at Christmas

THE VICARAGE

A Vicarage is available in Rockcliffe. This is not situated in the Three Rivers Mission



Community as currently configured but is within the area designated for the possible new Deanery Mission Community.

There is a good sized study downstairs accessible from the entrance hall and WC, a kitchen diner, utility Lounge, and Dining room. Upstairs there is a bathroom, separate WC and 4 double bedrooms There is an enclosed well kept garden, garage and an external store. As the new Mission Community becomes a reality it may be that the person holding this post could relocate elsewhere in the Deanery.

CHURCH LIFE IN THE MISSION COMMUNITY

There is a brief overview of each parish included later in the Profile. Through the process of Mission Action Planning (MAPping) The churches and congregations are beginning to build closer links with each other through mutual support and encouragement and the sharing of resources. There is a joint service on the 5th Sunday of the month which rotates around the Team area. We are about to embark upon a shared Lent course taking place in three different locations. Shared activities such as the Good Friday Walk of Witness and Lent Lunches have participation from all the denominations in the area. Confirmation preparation is organised across the MC area and we have plans to do this in the future with baptisms and wedding preparation.

There is also an Independent Free Church in Brampton who join in with Holiday Clubs, Easter and Christmas activities. The URC congregation closed some while ago, but the building remains and the hall (the Green Door) is leased for Youth Work headed up by the Network Youth Leader

There is a Mission Community Council who meet together at least 4 times a year. Churchwardens have just started to meet together and this will be a regular feature as we go forward. Treasurers also meet so that items of common interest can be discussed.

While each parish highly values its own Church buildings and services, there is a recognition that times change, and the traditional patterns may not be sustainable in the long term. Therefore we will be looking for people to undertake training to lead worship in order that each church, if they wish, will

be able to offer worship on a Sunday. As we explore Mission Community we are looking at new ways of 'being Church', ways that will enable growth in all the congregations, and strengthen the Church for the challenges ahead, while not losing the heritage we have received in each place.



MEDIA

There are several parish newsletters and a secular newsletter for Brampton which all carry Church news. Currently the Churches are individually responsible for updating 'A Church Near You'.

We are looking at having a Mission Community website that will feature all the parishes, and a weekly news sheet circulated to every congregation highlighting all activities across the Mission Community.

FINANCE

Each PCC is responsible for its own finances and individual parish accounts are available on request. With the appointment of a Team Administrator we are moving towards having all Clergy expenses paid centrally from a team expenses account, into which each parish pays a proportionate sum. This in a large part is already happening. Fees will also be administered on a team basis freeing up both clergy and church treasurers for other Missional tasks.

The Team Offer for 2023 is £130,891
 Team Ministry costs for 2024 will be £156,234

STATISTICS

2023 Statistics for the Anglican Parishes	Brampton	Castle Carrock	Crosby on Eden	Cumrew	Cumwitton	Farlam	Gisland	Hayton	Irthington	Lanercost and Walton	Nether Denton	Scaleby	Talkin	TOTAL
Usual Sunday Attendance	35	9	14	8	11	11	8	19	27	25	10	12	14	203
Electoral Roll	81	24	59	14	24	24	15	39	56	84	31	61	44	556
Baptisms	3	1	0	0	0	1	1	5	3	4	1	4	2	25
Weddings	0	0	0	1	2	1	1	0	1	1	0	0	0	7
Funerals	11	1	3	2	3	0	4	5	4	4	0	2	1	49

THE PARISH OF BRAMPTON

Brampton is a rural market town with a population of c 4,700. It is the only town in the Mission Community and has excellent local facilities. It is a tourist destination with its own Tourist Information Office. There is a Primary School and also William Howard Secondary School that takes pupils from a wide area.

The Church Building: St Martin

Built in 1878 to replace an earlier one on the same site. It is a unique example of the work of the Pre-Raphaelites and designated as a Grade 1 listed building, housing a unique set of stained glass windows designed by Sir Edward Burne-Jones and manufactured by William Morris. This attracts many tourists.

Worship: Services are held each Sunday with a congregation of c.40 but hosts civic services when the building can be full. There is a mid-week Communion and a weekly home group. It is currently starting a major project to enable it to become a fully accessible building. Many events are held in the building.



'The Green Door' - a centre for youth work run by the Network Youth Worker, is situated in Brampton in the Hall of the old URC Church. Volunteers are drawn from several churches in the area. Another centre for youth work has been started in the north of the Deanery in Longtown. Network Youth Church runs 3 weekly groups in Brampton and a monthly 'Food and Faith'

'The Green Door' is also used to host large meetings in the Mission Community.

Key action points from recent MAPping Expand current monthly service at retirement home to other homes. Have a second Bible study group. Bereavement pastoral care. Increase social activities to engage more widely with the community.

BORDERS METHODIST CHURCH, BRAMPTON

A community-based church with disabled access throughout, including meeting rooms, toilets and lift. Well used by the local community for many activities including a food larder that is open to the whole community once a week, when coffee and cake are served to encourage people to get together.



Worship: There is a service every Sunday as well as a midweek prayer service on a Wednesday. In addition to this there is a toddlers' group once a week in term time.

The Church members join in and help organise the Good Friday Walk of witness and other ecumenical events.

THE PARISH OF CASTLE CARROCK

The village of Castle Carrock has a population of just over 330 with a County Primary school and a Village Hall which is well used by local community groups and hosts an outreach Post Office, as well as a Pub serving food. At its centre is the Village Green (The Marr) on which community events such as the carnival are held.



The Church Building: St Peter

Dates back to 1828. Extensive work has been undertaken over recent years to make the building watertight along with major repairs under the timber floor, with extra disabled and pushchair access.

Worship: There are services twice a month with a regular congregation of 8, but can be filled for special services. It is open daily for prayer in the summer months and at weekends in the winter.

Key action points from recent MAPping To build on relationships with school and families. To ensure better communication between church and community.

THE PARISH OF CROSBY ON EDEN

Crosby-on-Eden is an old established rural village with mixed housing of old and new, The parish also includes several other hamlets. The population is c.823. with residents being both rural and urban workers. There is a village pub and a parish hall which is well used. Also a Church Primary school and a separately run independent Nursery.

The Church Building: St. John the Evangelist

The medieval church was rebuilt in 1854, and is adjacent to the school with which it has close links. A project to build an accessible toilet and a small kitchen is about to begin, with plans to have the building open every day to welcome the many walkers that pass through the area.

Worship: There are services twice a month with a regular congregation of c15 people. The school regularly have services in Church and assemblies are led by clergy weekly.

A good number of fundraising events take place which involve the whole community.

Key action points from recent MAPping Making the Building accessible to all, Reaching out and involving the community, Building stronger links with the school



THE PARISH OF CUMREW

Cumrew is a small rural parish with c 100 people. Employment in the village is predominantly agricultural with many commuting outside the area. There are few local amenities, with the exception of the local Inn which hosts some church fundraising events..



The Church Building: St Mary

Was rebuilt in 1890 and stands on the site of an earlier church dating from 1291. It is open every day of the year.

Worship: The monthly worship service has a regular attendance of 7 but this is greatly increased at Harvest, Christmas and Easter.

The Church is well supported by the community at social and fundraising events

Key action points from recent MAPping: To grow the life of prayer in and through the church. To draw families and all ages into church life. To foster the exploration of Christian faith

THE PARISH OF CUMWHITTON

Cumwhitton, includes several hamlets and outlying farms with a population of c270, and is essentially a farming community There is a village hall which hosts well-attended, Church run, monthly coffee mornings. There is also a pub which hosts fundraising and other community efforts.

The Church Building : St Mary

Built in the 12th Century. In recent years a lot of work has been done on renovations with much money raised by the local community

Worship: Fortnightly services are held with a regular congregation of 11 with larger attendance at Christmas, Easter, Harvest and special services.



Key action points from recent MAPping Better communication. New services e.g, Pet service, outdoor services. Build on 'Bring a Friend to Church'

THE PARISH OF FARLAM

Farlam is an extensive fellside parish including many hamlets. The population of this area is c. 669. Agriculture predominates and there is more social housing than is usually found in a rural parish. There is a community shop, housing a weekly post office and a library link : A public house, a garage and a village hall used by local clubs and organisations,

The Church Building: St Thomas a Becket

It was built in 1870, and has toilets and a basic kitchen. A Restoration Group takes the lead in maintaining and repairing the fabric of the church helped by the Fundraising activities of annual events.

Worship: There are services twice a month with an average attendance of 12. Relations with Hallbankgate School are excellent

Key action points from recent MAPping: – Explore different kinds of services. Equip laity to lead services. Bible Study / Courses to foster spiritual growth.



PARISH OF GILSLAND

Gilsland has a population of 890 plus outlying farms with much of the village in Northumberland. There is a well used Village Hall, a cafe, a Methodist Chapel and a Church Primary School visited weekly by clergy.



The Church Building: St Mary Magdalene

Is about ¾ mile outside the village near to the once thriving Gilsland Spa Hotel. It is a conveniently small building with an active churchyard. It is kept unlocked during daylight hours and is greatly appreciated by the visitors who come.

Worship: There are services twice a month. The small congregation has grown considerably in the past year. Special services such as Taize, Carols by Candlelight and the Lambing service are popular.

Key action points from recent MAPping Using Churchyard as a Mission tool. House groups and courses. Engage visitors when they come to Gilsland. Rewilding Churchyard

BORDERS METHODIST CHURCH, GILSLAND

The chapel was built in 1869. In 2002 a kitchen, cloakroom and toilet were added and the old school room made into a meeting room. The congregation is very small but loyal.

Worship: There are services twice a month, and a coffee meeting every Thursday.

THE PARISH OF HAYTON

Hayton is one of the larger rural parishes with a population of c.950. Consisting of a large village with several smaller villages and hamlets surrounding it. There is a Church of England primary school, garage, and a pub. There is a very active community life in the village.



The Church Building: St Mary Magdalene

The grade 2 listed building dates from 1780 and replaced an earlier medieval one
Worship :Services are held every Sunday with a congregation of 20+ but which swells to over 100 at some festival services. There is an excellent relationship with the school with regular assemblies in Church. There is a Church sponsored community choir.

Key action points from recent MAPping: – To strengthen the link between church and school. To improve access and facilities in church. To systemise pastoral care.

THE PARISH OF IRTHINGTON

Irthington parish is a rural area with four small villages one of which has a good village hall which is used by organisations from a wider area. There is Primary school which hosts an outreach post office 2 half days a week, and a village Inn. Carlisle Airport lies within the parish (although commercial flights no longer run from here)

The Church Building: St Kentigern's

A building project is underway to have an accessible toilet and a small kitchen. The Church will be open during daylight hours when work has been completed.



Worship Services are held every week with a regular congregation of c.25. The congregation is normally of the older age group, although children from the school join for Festival services.

Key action points from recent MAPping To find more ways to engage with the local community. To encourage more interaction with the school

THE PARISH OF LANERCOST with KIRKCAMBECK and WALTON

Lanercost with Kirkcambbeck

A sparsely inhabited rural parish. Population of c.778, and apart from Walton comprises small villages and hamlets spread across 34 sq miles. There are church primary schools at Lanercost and Lees Hill with close links to the churches.

Lanercost Priory is a 12th century Augustinian priory, the remains of which house the village hall and the church



Church Building: St Mary Magdalene

Grade 1 listed. Set in the nave of the original priory church, looking out over the ruined chancel. The church (and the remainder of the site) are a popular visitor attraction – the ruins are under the custodianship of English Heritage.

Worship Services are held every Sunday, with a regular congregation of up to 20, and there is a weekly mid-week communion service

Key action points from recent MAPping: Strengthen our mission and ministry to visitors, increased engagement with the local community, To increase engagement with schools.

Walton is on the Hadrian's Wall Path. Within the parish there are approximately 260 residents.

There is a village hall, tearoom and a microbrewery and bar. Tourism and farming are the main stays of the community.

Church Building: St Mary's

The latest church was built in 1869.

Worship: There is a service held twice a month, with an average congregation of 8, although like elsewhere in the Team there are higher numbers at Christmas and Easter. On the first Sunday the service alternates between Anglican and Methodist.



Key action points from recent MAPping : Extend work with school, continue rewilding of churchyard and further develop community events.

THE PARISH OF NETHER DENTON

Nether Denton is a scattered rural parish comprising of outlying farms, small hamlets and the village of Low Row. Population is c.415. The Taylor Institute, village Hall is situated in Low Row with a nearby Service Station on the A69



Church Building: St Cuthbert

The present Church dates from 1868, situated on an isolated mound on the site of an unexcavated Roman Fort pre-dating Hadrian's Wall and sits on the Stanegate, Roman Road. It is always open and has an accessible toilet.

Worship: There is a service twice a month, followed by refreshments. It has a proactive PCC involving the community in many events.

Key action points from recent MAPping: Expand social activity to involve more of the parish community to join us for worship at all the Services, especially the younger members.

THE PARISH OF SCALEBY



Scaleby is a rural parish of c360 people consisting of 5 hamlets. Those not working in the village farming or in related industry in the village are likely to work in Carlisle or Brampton and Longtown.

There is no shop or pub but there is a village hall that is well used for social activities.

Church Building: All Saints

There is a service held twice a month with an average congregation of 12 with much larger numbers at Christmas, Easter and Remembrance etc. and like many other farming areas is full for funerals.

THE PARISH OF TALKIN

Talkin is essentially a fellside area with a population of c130. Some new houses have been recently built. There are also some holiday homes. It has a refurbished Village Hall used for many community activities and functions. There is also a Village Pub.

Church Building:

It is a Grade 2 independent proprietary chapel, built by a local benefactor. There is a Memorial Garden, designed and constructed by the village community. It is open everyday

Worship: Services are held every Sunday attendance of 14 but like other rural communities sees this swell to 45/50 for special occasions. There is a church sponsored community choir.

Key action points from recent MAPping Encourage greater participation of young people and younger adults in church life. Look to use Village Hall for outreach events Widen the use of the Church building.

