

Welcome  
to the  
Parishes  
of  
The Beacon  
Team  
Mission  
Community



St Oswald's, Burneside



St John The Baptist, Skelsmergh



St Thomas's, Selside



St George's, Kendal

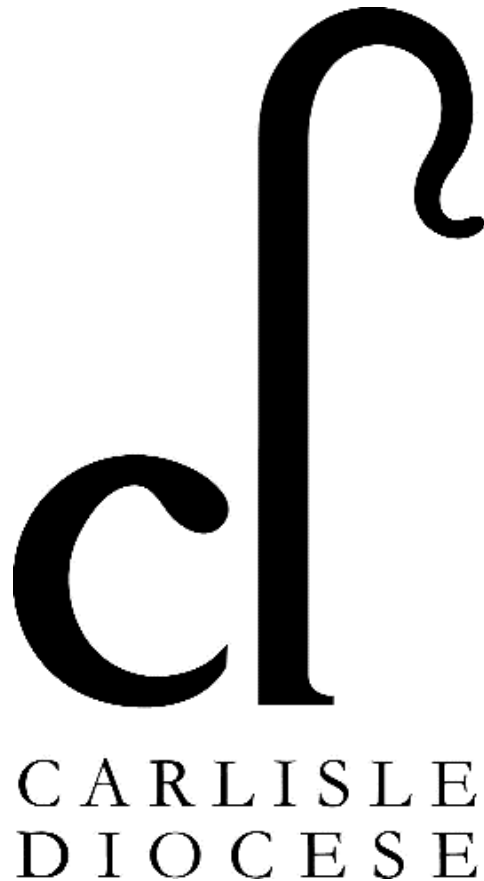


St John The Evangelist, Grayrigg



St Mary's, Longsleddale

## Bishop Of Penrith's Message



The Diocese of Carlisle is committed to the God for All vision. Launched in 2015, it is underpinned by a commitment across four denominations in Cumbria (the Church of England, Methodist Church, The Salvation Army and the URC) to see God's Kingdom flourish across the county. The vision is based on four values: Follow Daily (helping each other to follow Jesus more closely); Care Deeply (listening to our communities to serve them and to challenge injustice); Speak Boldly (sharing our faith in Jesus in everyday ways); and Tread Gently (seeking to sustain and renew the life of the earth). Mission Communities are the way in which the Church in Cumbria seeks to live out the God for All vision. They are deeply collaborative groupings of churches- between denominations, between clergy and laity, and between different communities- working together to proclaim afresh the gospel to each generation, faithful to its tune but improvising together to create new melodies for our place and time.

Bishop Rob

## About Us

The Beacon Team Mission Community covers the Anglican Parishes of St George Kendal, St Oswald Burneside with St Mary Longsleddale, St John the Baptist Skelsmergh, St John the Evangelist Grayrigg and St Thomas Selside.

As our name suggests, the team is committed to mission, and is constantly seeking new ways to reach out into our communities. Each Church has a long history of being a focal point and a place of witness within its own location, and many generations of families have connections to our churches. Since coming together as a Mission Community, we have begun to see the benefits of shared ministry and we are committed to facing the challenges of the future together. We greatly desire to be a blessing to our town and the villages of which we are a part.

For the past three years, the Beacon team has formed a strong link with the local Methodist Churches, joining together for the Alpha course and for the eight-week Bible Society course. There is a Beacon Team Bible Group, hosting Bible Study series during Lent and it is open to other churches.

St George's together with Grayrigg and Sandylands Cornerstone Church share a parish magazine, as do Selside, Skelsmergh and Longsleddale.

Annually there are Pulpit Exchanges for the Week of Prayer for Christian Unity. Other events include a walk of witness through Kendal on Good Friday and a Sunrise Service at Kendal Castle on Easter morning,

## Home and Overseas Missions and Charities

As a Team we help finance a child in Ethiopia to attend school, and sponsor our CMS link. We also support the Bishop's Harvest appeal, annual Christian Aid collections, Manna House and the Kings Food Bank, and individual parishioners have Charity boxes for the Children's Society. Occasional retiring collections are taken in aid of national or international disaster funds.



## The Ministry Team

We are blessed with a very committed team of Ministers.

At present, we have an Associate Priest, a licensed Lay Reader, and seven Licenced Worship leaders.

Two of these Worship Leaders are currently training as Lay Readers, and will be Licensed (God willing) in November 2024. Alongside them, is a retired priest who holds PTO and celebrates Holy Communion monthly.

We also pride ourselves in having many lay people who are involved in non-licensed ministry. The laity serve in administering the chalice, reading, leading intercessions and praying for healing with and for those in need.

Supporting our Ministry Team, we have a Team Administrator, based in the Team Office at St George's, and currently working fifteen hours a week. We have a Beacon Team notice sheet/worship sheet each week which is made available for Sunday worship.

## Our Ministry Team





### Longsleddale

A beautiful, narrow valley; covered in bluebells in the spring. This is Postman Pat's valley of Greendale!!

The church is towards the middle of the valley.

### Burneside

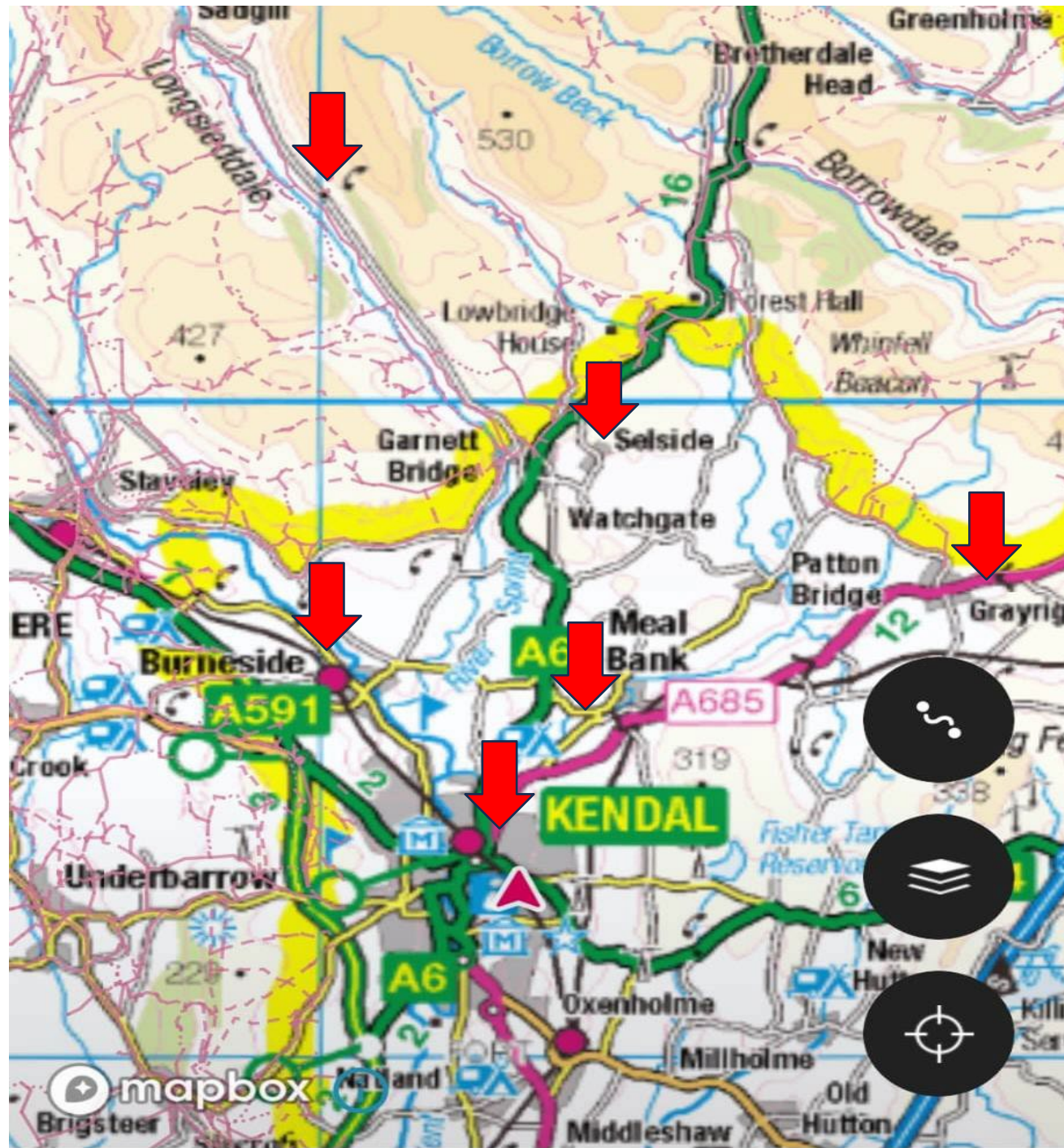
An expanding village on the outskirts of Kendal. Has its own railway station on branch line to Windermere and Oxenholme.

Famous for Croppers Paper mill providing all paper for The British Legion Poppies.

### Kendal

An expanding, old market town with railway station on the branch line to Oxenholme West Coast Mainline. Easy access to the M6 corridor.

Famous for Kendal Mint Cake, K shoes and snuff!



### Selside

A decidedly rural parish.

The area is best described as magnificent farming scenery.

There is sheep and cattle farming, egg production alongside diversification activities, and holiday cottages.

### Grayrigg

A small, close knit community village,

The sheep definitely outnumber the people here, and the views are breathtaking, however, it is in easy reach of the M6 and Kendal.

### Skelsmergh/Mealbank

A few scattered hamlets set in stunning, peaceful agricultural land, just off the A6.

Kendal is only a 10-minute drive away, so everything is easily accessible.

## Strengths and Opportunities

Strengths	Opportunities
Strong fellowship	Further links with our Methodist churches
Lay involvement	Developing activities with three church schools
Choice of vicarage	Further work with the community Hub
Churches in generally good repair	Expanding worship styles
Support for many charities and overseas projects, including sponsorship of our CMS link	
Lots of social activities	

## Safeguarding

Hello. My name is Heather Wilson and I am the PSO for the Beacon Team Mission Community.

Safeguarding is given the highest priority here. All who lead worship, and most of our PCC members, have undergone the appropriate Diocesan Safeguarding Training for their respective positions.

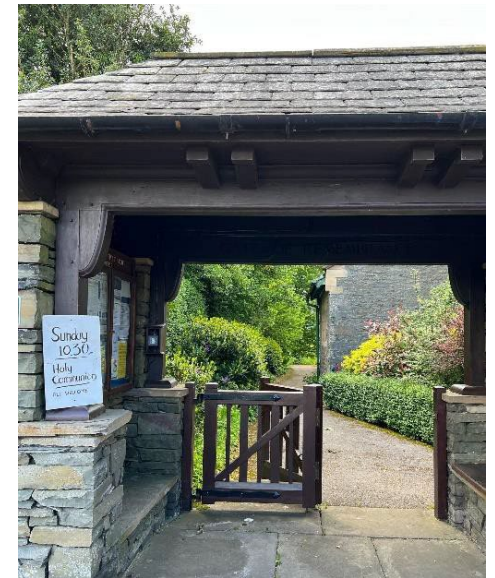
I and one worship leader are also certified by the Diocese to run and validate training. We have run three combined Foundation level training sessions this year, all of which have been very successful, and have engaged the participants in being aware of signs of abuse and understanding their responsibility to act if they suspect something is amiss. I am in regular contact with the DSO.



## Our Vision



- To make Christ known in our communities
- To be a blessing to our communities
- To grow disciples
- To help the church to flourish as individual churches and as a team.
- To encourage a wider sense of belonging and fellowship



## **The New Incumbent**

Our new Priest in Charge will have experience of Parish leadership and take overall pastoral responsibility for the six churches of the Team, whilst helping us develop and strengthen our links with each other, and with our Methodist friends; and on occasions with the local Roman Catholic Church.

### **We are looking to welcome a Priest in Charge who:**

- will seek to share God's love for us through sacrament, prayer and preaching.
  - is compassionate with good communication skills.
- is a good listener, able to discern the views and needs of the people they serve.
- will work to progress the team spirit which already exists, and lead us forward.
  - is a Team Player, able to work collaboratively.
  - will work with the congregations to develop lay ministry.
  - is keen to develop fresh ways of reaching the local communities.
- will take a prominent role in the schools, as a member of the governors, and hold weekly assemblies.



## Our Commitment to You

As a diverse range of churches, we recognise the challenges of ministering to us all. We will offer all possible support towards seeking a good work/life balance.

### In return, the post offers:

- supportive and prayerful congregations.
- a committed team of lay and ordained colleagues.
- cheerful, welcoming communities.
- a choice of house and location in/near a friendly market town with a wide range of facilities and excellent transport links on the edge of the Lake District.

### The Vicarage

The new incumbent will have a choice of vicarage.

3 Firbank, Kendal, Cumbria, LA9 6EG

4-bedroom brick-built house in St George's Parish. It has a large study, ample sized sitting room and dining room and spacious kitchen. One bedroom is ensuite. Access to the well kept garden is either down the steps along the side of the house or from French Windows. Situated in a quiet cul-de-sac, not far from the centre of town.



Skelsmergh Vicarage, Kendal, LA9 6NU

5- bedroom stone built, three storey house next to Skelsmergh church. Located in countryside, more or less in the centre of the benefice. It has two large sitting rooms and a reception room. The bedrooms are large with plenty of storage space. One bedroom has a built-in wash basin.



## Detailed Description of the Benefice

**Location** - Our benefice is both town and a large area of countryside. Geographically about half of the benefice lies within the Lake District National Park, however, almost all the population lives outside the National Park, principally in Kendal. Kendal is 7 miles north west of junction 36 on the M6. We have easy access by train to the West Coast mainline, which links Glasgow to London. It is just 2 hours 45 minutes to London. We have stunning views of the Howgill Fells. Morecambe Bay lies to our south and is only 10 miles away, and the Yorkshire Dales National Park boundary only a few miles to our east.

**Housing** - There is a real cross section of housing types across our parishes. Kendal town and Burneside have everything from old stone cottages to newly built housing developments and every type of accommodation in between. There is both private and social housing. The rural villages are mainly well-kept stone cottages, farm houses and converted barns. Most of these are still lived in, but a number are holiday lets.

**Education** - The benefice is blessed with three Church Primary Schools, St Oswald's Burneside, Selside, and Grayrigg. Alongside our Church Schools there is a wide variety of other education on offer here. St George's parish is home to two state primary schools, a large secondary school, a school for those with learning and/or physical disabilities, and one campus of the further education college. All have all been rated Good by Ofsted.

**Local Services** - The area has an excellent range of facilities for both performing arts and sport. Social amenities include The Brewery Arts Centre, housing a theatre and two cinema screens and playing host to the annual Kendal Mountain Film Festival, and Kendal Leisure Centre, which stages a number of touring orchestra concerts and nationally known comedians. Amateur theatre companies perform at Kendal Town Hall and The Bryce Institute, Burneside. The area has a number of successful youth and adult organisations, including choirs, theatre groups, uniformed organisations and specialist interest groups. Sporting venues include Kendal Rugby Club, Kendal Town Football, Burneside Cricket, Netherfield and Kendal Cricket Clubs, hockey for men and women, a dojo, a renowned climbing wall, Carus Green Golf Club and Kendal swimming club. The leisure centre has a 25m pool and a multi-gym and courts for different sports. Kendal town centre boasts a range of high street and independent shops and eateries, 6 supermarkets and an out-of-town retail park. Burneside has a post office, bakery, pub, local store, and fish and chip shop. Westmorland General Hospital offers a number of clinical services and is part of Morecambe Bay Hospital Trust.

### Typical Service Pattern per month

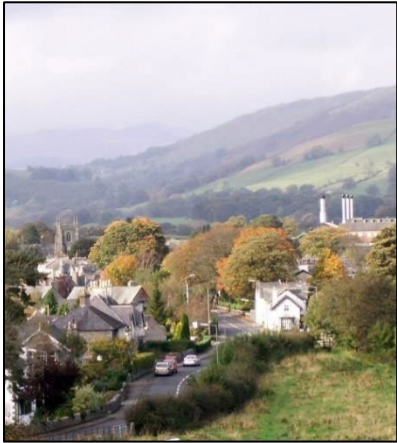
	<b>Burneside</b>	<b>Grayrigg</b>	<b>Kendal St George</b>	<b>Selside</b>	<b>Skelsmergh</b>	<b>Longsleddale</b>
1 <sup>st</sup> Sunday	Evening Worship 6pm	BCP Holy Communion 9.30am Morning Worship 11am	Holy Communion 11am	Morning Worship 9.30am	Morning Worship 11am	Abbey Service 10.30am
2 <sup>nd</sup> Sunday	Morning Worship 11am	Morning Worship 9.30am	Morning Worship 11am	Holy Communion 9.30am	With Selside	
3 <sup>rd</sup> Sunday	Holy Communion 11am	Holy Communion 9.30am	Holy Communion 9.30am	Celtic Evening Worship 6pm	Holy Communion 11am	
4 <sup>th</sup> Sunday	Holy Communion 11am	Evening Worship 6.30pm	Morning Worship 11am	Morning Worship 11am	With Burneside	
5 <sup>th</sup> Sunday	Team Service 10.30am	Team Service 10.30am	Team Service 10.30am	Team Service 10.30am	Team Service 10.30am	Team Service 10.30am
Wednesdays	Holy Communion BCP 9.30am					

Morning and Evening Worship services are usually led by one of the lay worship leaders.

We have Compline on Monday evening, and Celtic evening prayer on Friday, via Zoom.



## St Oswald's, Burneside



St Oswald's Church stands at the centre of the village of Burneside. The present building dates from 1881 although there has been a Church on this site since 1602. When the present Church was opened it had three aisles able to accommodate 300 worshippers. The Wilkinson organ is situated at the east end of the church. In 1983 the east end of the north aisle was formed into a Lady Chapel, which is used every Wednesday and on Sundays during the winter months. In the late 1980's the remainder of the north aisle was screened off (with folding screens) to form a meeting room, these may be folded back for large congregations.

Alongside the Sunday services there is a short prayer meeting held in the Chapel on Tuesdays at 6pm. The Church and the Residents association hold a Christingle service in November, followed by the switching on of the Christmas tree lights at

the village green.

It is a rural parish which borders the Lake District National Park. It has a population of just under 1900 people. The population across the parish shows a wide range of age and social grouping. Local farmland is used predominantly for the raising of sheep. In contrast James Cropper plc's Papermill and Headquarters are based in the centre of the village. This world-renowned company provides high-class fibre products, and paper for Remembrance Day Poppies



The use of St Oswald's Church as a community building has increased. It hosts an Outreach Post Office three mornings a week. The church toilet is designated a public convenience and is available daily, much used by walkers on the Dales Way which passes through the parish. The Parish Council houses a community fridge in the church, which is stocked twice a week and helps to prevent food waste. The church is the designated place of safety for the village and has Wi-Fi. A defibrillator is attached to an outside wall for public use. The meeting room is used regularly for meetings, such as the Mothers Union, Parish Council, an after-school tea and toys for children and parents. During the winter we provided a warm space and monthly soup lunches. A pick and mix afternoon is held once a month for anyone who wishes to have a chat over a cup of tea or take part in crafts or board games. The village Heritage group have storage space for their archives and organise exhibitions from time to time. We deliver a monthly newsletter and use the Burneside Community face book page for updates to publish weekly the names from the St Oswald's Book of Remembrance. This is greatly appreciated by the village community.

## St Mary's, Longsleddale

**The Place** - Longsleddale is a typical Lakeland upland farming valley in the heart of the World Heritage site that is the Lake District National Park. It has spectacular scenery and wildlife that is much appreciated by visitors and locals alike. Superficially little appears to have changed over the last two hundred years. It consists of a house every quarter of a mile or so, along a six-mile single track dead-end road. The local community have done much to enhance what services we have with fibre connection to all premises, our own public toilets and three water turbines that generate sufficient surplus of exported green energy and a much-loved church.

**The People** - Unlike many other Lakeland villages, most of our homes are in permanent or semi-permanent occupation with a strong sense of community purpose. Over the last thirty years the number of active farms has halved so changing the character of the community bringing in more wealthy, active, retired people.

There is regular e-mail contact with residents on church matters, but our main means of contact is through an award-winning monthly magazine namely the Church & Community News, covering Skelsmergh, Selside and Longsleddale. It is much appreciated and distributed monthly to over 90% of households within the three parishes. The Vicar's letter is a main feature each month and the magazine is a major contribution to community cohesion.

**The Church.** - St. Mary's is an attractive rural Lakeland Church. It was built in 1863 along with the Vicarage and school (now the Community Hall). The building is in good order; having been re-roofed fourteen years ago along with other repairs. In 2022 the DAC inspected the Church and gave permission for internal and external repairs; these were completed in July 2023. Four years ago, the church was facing closure, but substantial community resistance led to an unusual solution. A small group of individuals, supported by Burneside PCC and the Incumbent, now continue it as a Festival Church. In addition to seven festival services a year, it is used monthly by a Fresh expressions worship group and for baptisms, funerals, and weddings. The threat of closure spurred the community into action with increased contributions both financially and practically. In co-operation with the Church's Conservation Trust, Longsleddale is the only church in Cumbria promoting 'Champing'. Visitors stay overnight in the church for a fee. This has brought an income to our community, as well as introducing many visitors to our valley. Our efforts have also been covered by BBC local television. The church is now also on a sound financial footing with 1.8 years of annual operating expenses in reserve.



## St George's Kendal

St George's is the town church of the Beacon Team Mission Community, and is set in the midst of green open space by the river Kent. The parish occupies the north-east quadrant of Kendal, with a population of approximately 5000. It is one of three Anglican churches in the town, which is now growing through a range of industry, retail and housing developments. It's likely that more people work in the parish than live in the parish. The residential areas are a mix of private and social housing and there are attractive green spaces for recreation.

Worship is ordered but far from stuffy, and we try to be welcoming without being overwhelming. We want people to feel they can join an existing group, or just come to worship on a Sunday. We are open-minded and exploring in our faith and appreciate meaningful worship and thought-provoking sermons.

Our church community come from a range of Anglican backgrounds. The majority of our congregation are older people who have been faithful members of the church for many years, but there are also a number of more active people, and a new family. At St George's there is a strong sense of fellowship. We also have the pleasure of regularly welcoming visitors.



The building is in generally good order with much hard work being done, by church members and friends, to improve the internal décor. As with many old church buildings, heating and maintenance present ongoing issues.

The nave is vast, and houses a Grade 1 listed Wilkinson organ which regularly attracts visiting organ scholars. We have played host to The King's Men choristers from Cambridge a number of times. The church is regularly used as a venue by local choirs and other concert performers who particularly appreciate the very fine acoustics. The calm atmosphere of the nave and adjoining chapel offer a peaceful space for private prayer and quiet reflection.

Hospitality is key feature of St George's lifestyle. A warm carpeted meeting room and a fully equipped kitchen are often in use, particularly for a weekly community lunch. There is an upper hall and stage.

St George's with Grayrigg Mothers' Union meet monthly for fellowship and talks.

Our facilities are used by a number of non-church local groups. During term time our building is used by a very popular Dance Company, a pensioners group and a badminton club. Weekly, we host the local Alcoholics Anonymous branch.

After flooding in 2015 St George's played a significant role in supporting the local community.



## St John the Evangelist, Grayrigg

The Parish of Grayrigg covers a sparsely populated area where agriculture predominates, but it is in easy reach of Kendal and the M6. Grayrigg church became a member of the Beacon Team in 2007, and within that has continued to have weekly worship and joint services with the other Team Churches. The ecclesiastical parish of Grayrigg (consisting of the townships of Grayrigg, Whinfell, Lambrigg, Docker and Dillicar) has a total adult population of 688 (Census 2011 data).

The small village of Grayrigg, some 5 miles north-east of Kendal on the A685 is the main centre of population, the remainder of the parish consists of scattered farmsteads and other dwellings. This is essentially an agricultural community with Church, primary school, village hall and alms houses. The new incumbent will become a trustee of the Mary Rowlandson Alms-houses.

In addition to the working farms, several people have various jobs in Kendal and further afield, while others are retired. There are some second homes and holiday accommodation. The population is spread over a wide age range.



The church of St John the Evangelist was rebuilt in 1837/38, the interior of the church was renovated in 1909/10. It consists of a chancel, nave, south porch and embattled western tower containing one bell. It holds some 186 sittings and has been well maintained. The parish registers date from 1730 and are deposited in the Cumbria record office. There are no other licensed places of worship in the Parish.

The church receives great support from the wider community despite a small congregation. On Good Friday there is a community walk to the top of Whinfell Beacon and a short service is held on the summit. The primary school has a good relationship with the church.

Many members of the congregation contribute to worship and pastoral care through intercessions, reading, being sides-people, cleaning, helping at the weekly St. Georges Community Hub, and volunteering at Westmorland General Hospital. Although the latter was suspended during Covid, people are willing to help again when it resumes.

Christmas Fairs and Plant Sales take place regularly at Grayrigg and go a long way to raise funds for the upkeep of the Church. A flourishing Parent and Toddler Group, the Ladybirds, was begun in 1992 and has links with the Church. There are many other village organisations including, Young Farmers, Table Tennis Club, a fitness group, an annual Agricultural Show and the Grayrigg Carol Singers Concert Party. There is scope for work with younger members of the community and further encouragement of lay involvement in the life of the Church.

## St Thomas's Selside



Our parish is decidedly rural! Unlike many villages, Selside does not have an identifiable village centre. The church stands alone, bounded on its sides by the graveyard, fields and a country lane. The church primary school is nearly a mile away and the Memorial (community) Hall another mile away to the north. However at community events there is an almost tangible sense of social cohesion among the people.

Although our congregation has declined in numbers over the years, there is a strong desire in the remaining congregation to ensure there is no further decline. We regard the church as an integral part of the community, and do our best to keep the church functioning. Festival services generally attract greater numbers and reflect the high value the church holds in the local community.

To this end, we provide hospitality at the end of each service, to extend fellowship in an unstructured manner. It is an opportunity to further support each other and offer a welcome to any visitors or occasional attendees. This fellowship is one of the most important aspects of our church life because it provides for outreach, support, church development, spiritual growth, sharing opportunities and more.

Our ministry to each other and those in the wider community extends beyond the church services. The established networks between the congregation and the wider community ensure that we are aware of each other's needs and we support each other effectively; this is often reflected in our intercessions.

Sometimes we share our worship with our school and to accommodate them the worship might be on a weekday. Our worship is important to us, and our styles are varied. We collaborate with the minister to construct and design worship for special occasions such as our 'Light Up a Life Service.' Members of the congregation often assist the Worship Leader by reading lessons or writing intercessions.

We are 'bronze' members of Eco Church: this reflects a commonly held attitude amongst our members, that we care for creation and the beauty we are lucky enough to live in.

Our church is Grade 2 listed building, built in 1838, with a tower added in 1894. We have an absolutely stunning east window which beautifully reflects our setting between the Lake District Fells and the Howgills. The church seats about 100 people and there is a small vestry at the rear. We have a small 'Wilkinson' organ which, although in working order, is receiving attention. A graveyard is situated on two sides of the church.

## St John the Baptist, Skelsmergh

Skelsmergh & Scalthwaiterigg Parish is on the northern outskirts of Kendal surrounded by agricultural land and a few scattered hamlets. The parish has a population of about 333, last measured at the 2021 census. Some properties are second homes.

Skelsmergh Church was built in 1871 by the parishioners and stands prominently by the A6, off Helme Lane.

On the other side of the lane is the Community Hall. The modernisation of this was funded and organised by local people, and is a regularly used venue for activities including wedding receptions, coffee mornings, indoor bowling, and keep fit classes.

It has been leased to a local Hall Committee from 2002 to 2030. It operates mostly independently of the church and operates at a profit.

The church building itself is in good shape, with a simple interior capable of accommodating 100 without recourse to the Lady Chapel. The organ is kept in working order. The building remains open throughout the day, so that it can be used by anyone.

We have volunteers from our ranks for all day to day running of the church including the PCC. We also have a band of dedicated friends of the church who help out when we ask.



Although attendance is light, we have a very loyal congregation of mainly elderly people, who have historic connections with the area and the church. Our location is popular for Weddings and Baptisms.

Ecumenical links with other denominations organised by the Beacon Team have been accepted as an essential way forward.

There are coffee mornings in the Community Hall organised by church members and other fund-raisers throughout the year.



## Our Church Schools

### St Oswald's CE Primary School



There are approximately 100 primary and pre-school age children on roll, with the primary children divided into four classes. Two members of Burneside PCC are school governors and take an active role in the life of the school. The school attend Church several times a year for special services such as, Christmas, Easter, and the leavers service. School artwork, recognising the church seasons or important events, is displayed in Church and is greatly appreciated by the congregation and visitors. There are a variety of after school clubs including, breakfast, after school care for working parents and a cookery club. Open the Book' is regularly presented to the school in worship by volunteers.

### Selside Endowed CE Primary School

"Selside is a very special place to learn, and we see each day as a learning adventure. Situated just off the A6, we have the most amazing grounds, including a wild life area and stream, a large playing field and an outdoor classroom. Our environment greatly contributes to our children's sense of well-being and provides endless opportunities for learning. All children are treated as individuals and taught in small class groups. This approach allows children to enjoy learning and achieve success. We believe that children thrive in this small-scale family environment where they can develop a sense of both personal and communal responsibility. We enjoy involving parents and the wider community in the life of the school. We work closely with the church and families." June Lowther Headteacher



### Grayrigg CE School

"Here at Grayrigg CE Primary School, we are very excited to welcome a new Vicar into our family. We know, having three schools is a big job as well as all the other jobs a Vicar does but we hope you will bring together the Beacon Team schools as you will with the churches so our Beacon family can work together." Kirsty Cooper Headteacher



Some quotes from the Ethos Leaders in year 5 and 6, to let you know what they would like in a new Vicar.

"to love us  
whatever our  
faith"

"We want someone who  
comes and does Collective  
Worship"

"understands that we  
might sometimes be a bit  
untraditional and quirky"

"to help us raise  
our voices against  
injustice"

"know our favourite words are  
flourishing, belonging, justice,  
Ubuntu and Umuganda and their  
meanings."

## Other Education Establishments in the Parishes

### The Queen Katherine School

“Pupils, including students in the sixth form, are happy and proud to belong to this school. They appreciate the wide range of subjects that they can study. They also enjoy the varied opportunities that the wider curriculum provides for them to develop personally and socially. Staff know pupils well. Pupils are supported effectively to meet the high expectations that adults have of their achievement and behaviour. Pupils and students in the sixth form achieve well across a range of subjects. This is because leaders have focused on the development of each pupil as an individual.”

Ofsted Inspection report: 31 March 2022

**Stramongate Primary** “The School has forged a strong partnership with the Church over many years. Involvement, primarily through Jean Radley Assistant Priest, has taken many forms from being a listening ear in terms of staff wellbeing, being a hugely effective Chair of Governors and now a present Member of the School’s governance team. Also, Jean is a regular visitor to school, leading assemblies and actively teaching and supporting our RE curriculum. Our link with St George’s has been cemented during challenging community times such as Covid-19, the Storm Desmond floods and more recently the cost-of-living crisis. Stramongate look forward to continuing our link with Church. Like the Church, we are very much focused on serving the community and forging effective partnerships.”

Matt Beresford

Headteacher

### Castle Park Primary

“This school continues to be good.

The leadership team has maintained the good quality of education in the school since the last inspection. Castle Park is a vibrant and happy learning community. You and your leadership team are aspirational for the school. You have provided an inclusive and welcoming environment where all are encouraged to discover their talents and achieve their best. Pupils leave the school very well prepared for their next stage of education.”

(Ofsted short inspection 9 January 2019)

**Kendal College** “provides education and training for approximately 3,400 learners. Just over one third of learners are aged 16 to 19 and are on full-time courses, just over 600 are apprentices, and the remainder are adult learners. The college provides courses from entry level to level 5 in a range of subject areas. The largest subject areas are: health and social care; science, technology, engineering and mathematics (STEM); hospitality and catering; creative and performing arts; and construction. The vast majority of learners attend the main college campus. Those on creative arts courses study at the arts and media campus in the centre of town.”

(Ofsted interim visit: 22 October 2020)

### Sandgate School

“Everyone receives a friendly welcome when they arrive at Sandgate school. Pupils, including children in the early years, develop and grow in the happy and nurturing environment that leaders have created. Pupils form positive relationships with caring staff. This helps pupils to feel safe in school. Pupils’ smiles show how much they enjoy playing and learning with their friends. Parents and carers appreciate the many opportunities and support that leaders provide for their children.”

(Ofsted Inspection report: 21 June 2023)

## Organisation and finance

Each Church currently has its own PCC, with a representative of Longsleddale being a part of Burneside PCC. Each Church is responsible for its own mission and finances, with each Church contributing to a joint Team Offer to the Diocese and a Beacon Team account for expenses incurred by the Team.

### **Latest Electoral Roll Data**

St Georges's Kendal 58

Burneside 46

Grayrigg 25

Selside 25

Skelsmergh 20

Longsleddale 18

### **Parish share Offers 2023**

St Georges's Kendal £21000

Burneside £18,600

Grayrigg £12,500

Selside £3,300

Skelsmergh £6,000

Longsleddale £3,700



## REGULAR CHURCH ACTIVITIES

### Mother's Union

The Beacon Team has two branches of the Mothers' Union. St George's and Grayrigg MU amalgamated in 2012, whilst Burneside, Skelsmergh, Selside and Longsleddale are also amalgamated.

*"Fellowship, prayer and enjoyment are at the heart of our meetings. We enjoy a variety of speakers but also have members meetings. Our link branches, St Luke's Orell (near Wigan) and Bolton (near Appleby) visited in the summer and we are in regular contact. We welcome visitors. We also take part in Deanery, Diocesan and National projects if appropriate."* (Mary Atkinson President)



Mother's Union members preparing the 'Reception' following the Stramongate School Year 5 'Wedding'



**An after-School tea and toys** for children and parents at Burneside.

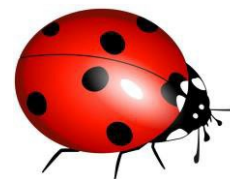
**Chatter and Natter:** a monthly get-together for a chat and morning coffee at St George's

**Community Hub Lunch** weekly lunch at St George's, open to everyone. Attended and served by a number of volunteers from the local community.

**Monthly soup lunches** at Burneside and Grayrigg.

**Winter Warm Spaces** at Burneside and St George's

**Ladybirds** A flourishing Parent and Toddler Group, begun in 1992 and has links with Grayrigg Church.



## Summary and looking forward

The Beacon Team is a community where it is safe to try and fail; it is a community open to new ideas, where success is celebrated. We are a community of support and encouragement.

Like all Churches, the Beacon Team churches were badly affected by Covid and the subsequent lockdown. Sadly, some of our members have not returned to the fold, and our numbers are depleted. A new Incumbent would be joining the team at a time when confidence is returning and there are opportunities and enthusiasm for fresh ideas.

Being part of a team is proving to be a faith enhancing experience for many of us, and we hope to build on this in the future. We are always willing to listen and respond to new opportunities for ministry and outreach.



Congregational photograph  
Team Service October 2023



Beacon Team  
Passover Meal 2023