

Curate Profile

HARRINGTON, DISTINGTON AND WESTFIELD



www.godforall.org.uk



Diocese of Carlisle

CONTEXT - MINISTRY IN THE DIOCESE OF CARLISLE

The Diocese of Carlisle is committed to the God for All vision. Launched in 2015, it is underpinned by a commitment across four denominations in Cumbria to grow God's Kingdom through the development of ecumenical Mission Communities. The vision is based on four values: Follow Daily (helping each other to follow Jesus more closely); Care Deeply (listening to our communities to serve them and to challenge injustice); Speak Boldly (sharing our faith in Jesus in everyday ways); and Tread Gently (seeking to sustain and renew the life of the earth).

Carlisle Diocese includes 351 church buildings and 105 schools, and is led by the Bishop of Carlisle, supported by the Rt Rev. Rob Saner-Haigh, suffragan Bishop of Penrith. The See of Carlisle is currently in vacancy with a new appointment expected in the summer of 2024. Though we cover a large region, Cumbria only has a population of 500,000. In turn, this makes us a friendly Diocese where relationships are often strong.

Mission Communities are the way in which the Church in Cumbria seeks to live out this vision. They are deeply collaborative: traditional ministries and forms of church, working intimately alongside innovative and pioneering expressions. They are collaborative between denominations, between clergy and laity, and between different communities. The ability to work collaboratively and ecumenically, as well as the ability to encourage all believers to discover their calling and use their gifts in ministry is essential to a thriving ministry in a Mission Community context. Harrington, Distington and Westfield belong to the Workington Mission Community, sitting at the southern end of it.



Rt Rev Rob Saner-Haigh,
Bishop of Penrith



St Mary on the Hill, Harrington



Church of the Holy Spirit, Distington



St Mary's, Westfield

WHERE ARE WE?

Harrington is on the west coast of Cumbria, and Distington is slightly inland from Harrington. Both villages are on the south side of Workington. The parish of Harrington includes High Harrington and Salterbeck, whilst the parish of Distington includes Pica and Gilgarran. Both have areas of affluence and deprivation.

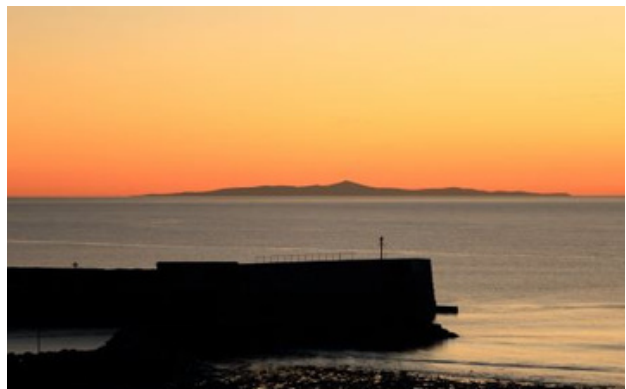
There is a regular train service from Harrington Station, north to Carlisle and south to Barrow-In-Furness, a regular bus service between Harrington and Distington and of course, there is easy access to the Lake District National Park.

Perhaps unusually for a post-industrial area, we have a very strong sense of community and this post would suit someone who enjoys being at the heart of a community. The communities in the main, are people who have remained local all their lives. We are a resilient people, who have seen major industries close down in the area in recent history and a great deal of adjustment has been accommodated. The current main employer in the area is Sellafield Ltd, who are responsible for decommissioning the Nuclear installation there. Our communities are very friendly and welcoming. Harrington has a growing community with many new housing developments emerging and Distington has a village feel with a strong community spirit. People who come to us from outside the local area often fall deeply in love with us and don't want to leave.

Westfield is a post-industrial area, immediately south of Workington, with a population of around 6,000, a high deprivation index and (by Cumbrian standards) a high population density. In recent years, Housing Associations have been using demolition and new-build to accommodate increasing numbers of young families in low cost housing, and to provide elderly people with bungalows or apartments. At present Westfield is a separate benefice but pastoral reorganisation is currently being considered, to enable effective working together. A new Pioneering Priest in Charge, Rev Sharon Murphy, was licensed to Westfield in July 2023. It is expected that your ministry would be conducted across all three parishes, as part of the emerging team, alongside Rev Sharon and the Rector of Harrington and Distington, Rev Dom de Mattos, who will be your training minister.



View across Distington

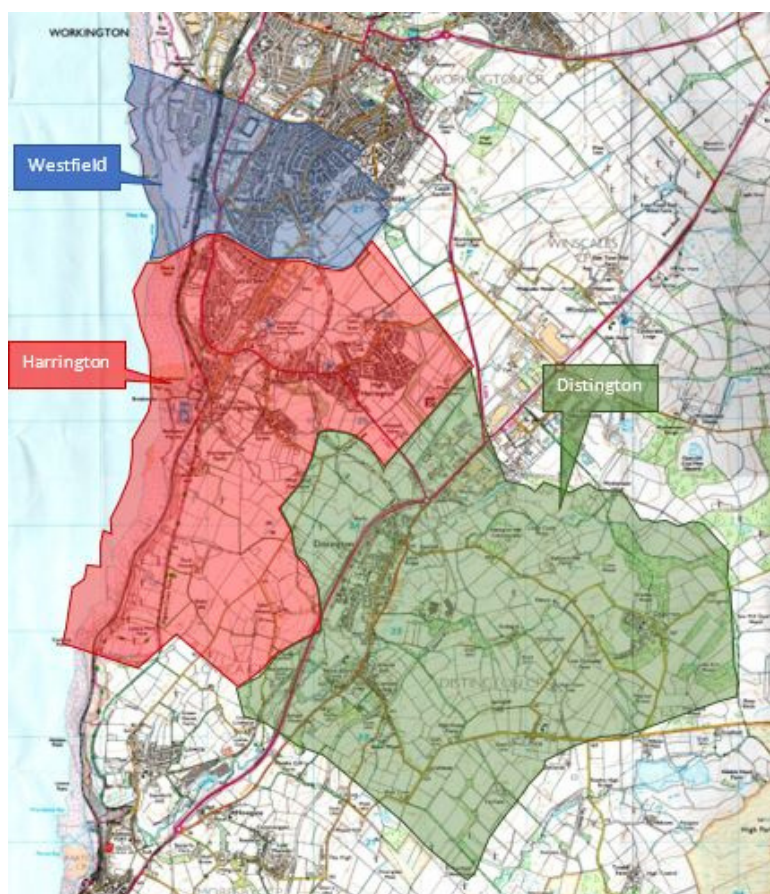


Harrington Harbour at sunset

PARISH BOUNDARIES AND DEMOGRAPHICS



General location of Distington



Harrington, Distington and Westfield approx. parish boundaries

	Harrington		Distington		Westfield	
Population (2018)	6019		2320		6505	
Households	2458		1025		2943	
Deprivation index (where 12307 is least deprived parish)	1276		1593		299	
Area (square miles)	3.8		5.0		1.2	
0-4 year olds	6.0%	361	5.6%	130	6.9%	449
5 – 17 year olds	14.6%	879	12.8%	297	16.0%	1041
18 – 29 year olds	13.8%	831	13.2%	306	16.3%	1060
30 – 44 year olds	18.2%	1095	17.5%	406	17.5%	1138
45 – 64 year olds	28.2%	1697	28.6%	664	25.6%	1665
65+ year olds	19.2%	1157	22.2%	515	17.7%	1152

Harrington, Distington and Westfield population demographics

OUR WORSHIP, MISSION AND COMMUNITY LINKS



Refreshments after Communion in
Harrington Church Hall



Massy Mary's



Renew Wellbeing Cafe

We have a variety of Sunday services and those at St Mary's Harrington are live-streamed. In addition, as you can see from the photographs, we have a number of creative services and outreach activities that enhance our mission to the communities.

At Harrington & Distington, we have established very good links with local schools and a college. At Westfield, the two Church Halls are very well equipped and are in constant use by community groups. Links with Victoria Infant and Nursery School, Westfield Nursery and Primary School and Moorclose Sixth form Centre need to be re-established. We have a very active, 'Churches Together', group for Workington & District. Historically we have had good relationships with the Scout Association, including Beavers, Cubs, Scouts and Explorers. There are six parade services each year, with each section of the association leading two of them. There are also three local Residential Care Homes in Harrington & Distington where regular services of Holy Communion are held.

Occasional offices are a very important part of our outreach in all three parishes. Confirmation services are held annually and Harrington & Distington have recently passed resolutions to allow children to take communion before confirmation. Remembrance Services at Harrington & Distington are important civic and community events. Christmas and Easter cards are delivered by the Church to each house in Harrington & Distington, and both churches are particularly well attended at the Christmas Eve Crib services and the Christingle services. Attendance at Westfield is lower, with the need to re-grow much of our mission and outreach from the beginning, which is why a Pioneer Priest in Charge has been appointed. Within recent memory, however, Westfield was extremely active in the local community with Sunday Schools, a youth group and a strong programme of outreach. Although the current congregation is small and largely elderly, we are looking forward to re-establishing outreach again.



Line Dancing at Westfield Church Hall



Warm Welcome Cafe at St Mary's Church
Hall, Harrington

THE MISSION COMMUNITY

Harrington, Distinguon and Westfield belong to the Workington Mission Community, sitting at the southern end of it. Our newly appointed incumbent, Dom de Mattos, is expected to take up the post of Mission Community Leader when he arrives in November 2022. The Mission Community also includes St John's and St Michael's, Workington and the parishes of Camerton and Seaton.

The Mission Community was launched shortly before the disruptions of Covid and the disruption has meant that, for all practical purposes, the Mission Community is just beginning its journey of working together. Building collaboration is our first priority, so the starting point is for the benefice of Harrington & Distinguon and the benefice of Westfield to start working closely together as a single team. Your role will be pivotal to that team-building as you work with the Team Rector (who will be your training incumbent) and the prospective pioneer appointment at Westfield.

At the same time, the parishes of St John's and St Michael's, Workington, are working to become a single benefice and to put in place a mission plan that will allow them to play a full part in the life of the Mission Community.

The Mission Community also benefits from the oversight of our Network Youth Church leader, Yvette Ladds, but the youth church locally is under-resourced, so a significant mission priority for the Mission Community will be to establish more locally-grown youth work. As part of this, St John's and St Michael's are looking to appoint a parish youth worker.

We will also be exploring ways to work more collaboratively with the Methodist Churches in Workington, Seaton and Harrington, and the URC Church in Workington.

You will be arriving at an exciting time in the development of the Mission Community and the ability to work collaboratively, creatively and ecumenically will be key.



WHAT WE ARE LOOKING FOR

A CURATE WHO WOULD BE INVOLVED IN BOTH SUPPORTING PARISH MINISTRY AND ENGAGING IN INNOVATIVE MISSION

This curacy offers not just the broad range of ministerial experience necessary to fulfill the training objectives at IME2, but a chance to stretch the wings and learn to fly.

The purpose of curacy is:

- To allow mistakes to be made in a safe context
- To fill the gap between training and experience
- To allow for opportunities to grow fully into priesthood and form a sense of “self”,
- To develop a clear understanding of distinctions between diaconal and priestly ministry and how diaconal ministry should be carried through into priesthood

The curacy will specifically provide experience of planning for and conducting traditional and contemporary services and occasional offices, including the pastoral support that goes with them, pastoral care, civic and ecumenical engagement, experimentation with prayer and mission within the God for All framework. Our Curate will be encouraged to be diligent about setting aside their study time and safeguarding their day off. The Training Minister will ensure that quality time is set aside for supervision and open discussion.

Our curate will be encouraged to learn to operate within a busy ministerial team and to learn to take on leadership responsibility. We seek to equip and develop in our curate a potential to become a leader of mission communities, with the management and leadership skills to encourage and equip others for ministry.

We are looking for someone who has the confidence to try new things and to step outside their comfort zone, someone who is ready to learn and is willing to be honest about their struggles. Our curate will have a heart for the community and a passion for prayer. Enthusiasm, optimism and a sense of humour will go a long way.

YOUR TRAINING MINISTER

Rev Dom de Mattos

Dom has twenty-five years' experience of ministry, first within an active ministry team as a licensed Reader then as an assistant curate in the Diocese of Rochester. At the same time, he led a management team as the managing director of an engineering consultancy employing twenty-six people. His experience both of practical team ministry and secular leadership places him in an ideal position to mentor others in both leadership and management.

Dom is a great believer in encouraging others to explore their ministry and to find the shape that is unique to them. He equips and encourages them to take risks and to step out in faith, always ready to give support and back-up if things don't quite go to plan. He empowers them to make their own decisions within the framework of an overall vision and enables them to grow in faith and confidence in their ministry.

Dom has worshipped within both the charismatic evangelical tradition and the liberal catholic tradition, giving him a wide appreciation of different styles of worship. He has a liberal theology, with an evangelistic heart and a conviction that God makes a difference in the world. Prayer is at the heart of his ministry. He strongly believes that God speaks to us as we meditate on the bible and seek enlightenment through prayer, making it God's living word for us today. All God's people need the Holy Spirit to hear what he is saying to them, so that his word is always relevant in every generation.

Dom has a degree in Civil Engineering from Southampton University, as well as a degree in Theology, Ministry and Mission from Durham University. He is married with two daughters and became a grandfather in December. He writes speculative fiction as hobby and belongs to a writers' group based in Kent.

Dom took up the post of Rector of Harrington and Distington on 25th November 2022.



Rev Dom de Mattos, Rector



Rev de Mattos with his wife and the Bishop of Tonbridge

THE REST OF THE TEAM

The team consists of:

Rector

Pioneer Priest in Charge, the **Rev'd Sharon Murphy** who joined the Diocese from a Bishop's Mission in Derby and started at St Mary's Westfield in July 2023. Sharon is also licensed as Associate Priest at Harrington and Distington.

Part time associate minister, the **Rev'd Alison Riley**, who is also Network Youth Church Minister for Calder Deanery.

Reader, **Richard Wilkinson**, who is also a Chaplain at West Cumberland Hospital and Whitehaven Rugby Club. He is currently exploring the possibility of ordination.

Ordinand, **Ruth Illman**, who will be ordained at Petertide 2024 and will undertake a part time curacy within the united benefices.

3 x Hard working PCCs

For our strong tradition in music -

- 2 x Organists
- 2 x Church choirs
- 2 x Occasional guitarists at Harrington

'The Tuesday Gang', a group of volunteer parishioners who carry out maintenance of Harrington church, hall and grounds, and who help out at the other churches on an occasional basis

Teams of volunteer parishioners who clean, make teas & coffees, read, lead intercessions, run toddler groups and assist in the preparation of services and functions

It is envisioned that there will be a collaborative approach across the Mission Community and we are looking to establish a Pioneer Hub across the west of the county, which they and you would be invited to join.



Rev'd Sharon Murphy



Rev'd Alison Riley - Part time Associate Minister



Richard Wilkinson,
Reader

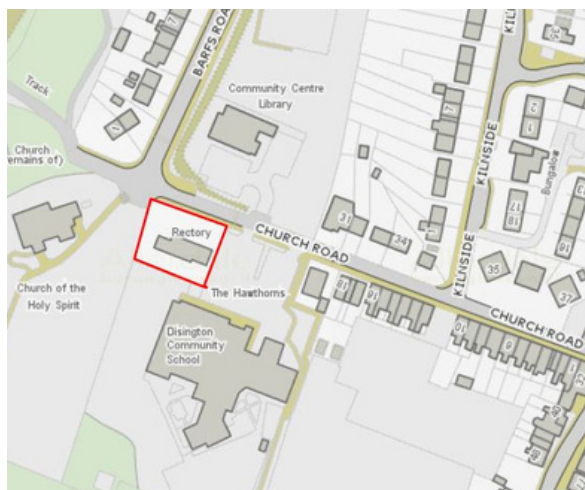


Ruth Illman, Ordinand

CURATE'S HOUSING



You will be housed in the The Rectory, Church Road, Distington CA14 5TE. The Rectory is an attractive four bedroomed house with a dedicated study and enclosed garden, situated at the heart of the community between Holy Spirit Church and Distington Primary School. Floor plans are available on request.





- <https://www.stmarys-harrington-and-holyspirit-distington.co>
- <https://www.facebook.com/stmarywestfield/>
- <https://www.carlisle-diocese.org.uk/>
- <https://www.godforall.org.uk/>



Looking north from Harrington Harbour

HARRINGTON, DISTINGTON
AND WESTFIELD

WOULD YOU LIKE TO ARRANGE A VISIT?

Contact:

Diocesan Director of Ordinands
Rev Canon Peter Clement

Email: peter.clement@carlisediocese.org.uk

Tel: 07823 415815

