

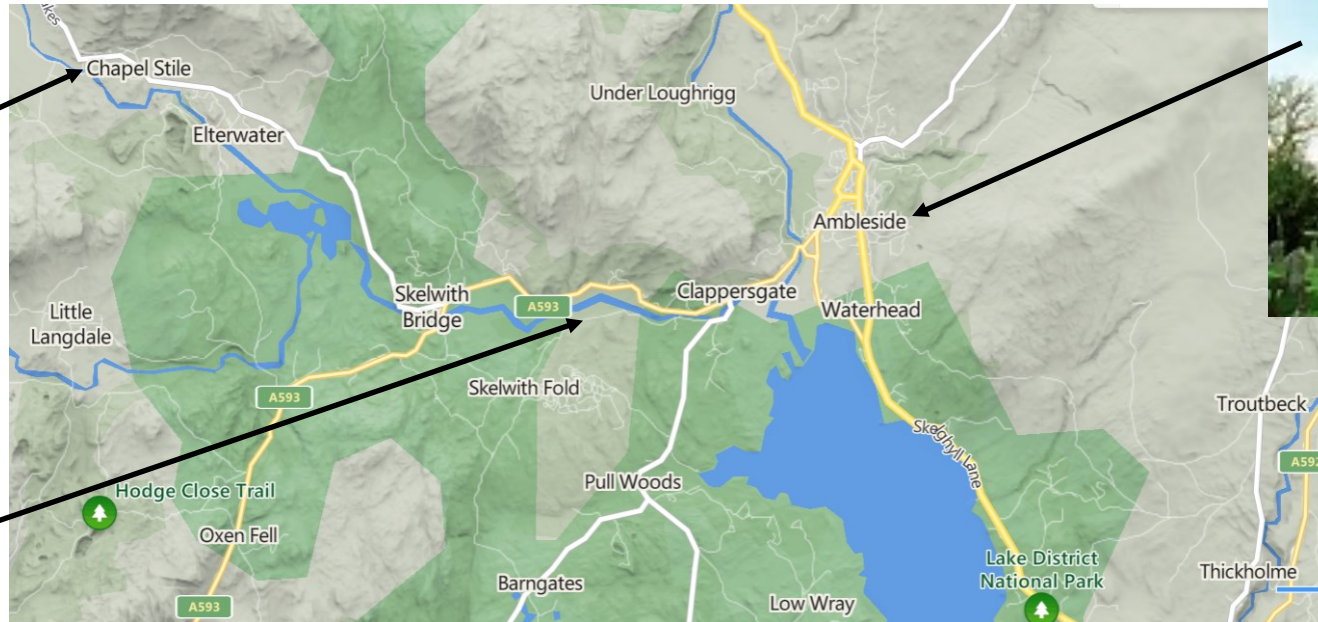
The Loughrigg Team Ministry Benefice



Holy Trinity Church, Langdale



Holy Trinity Church, Brathay



St Mary's Church,
Ambleside

The Loughrigg Benefice encompasses three parishes in the heart of the Lake District National Park. This beautiful location is ideal for a variety of outdoor activities, including walking, water sports, mountain biking and cycling.

The three churches are distinct and different in character and more detail about their individual natures will be outlined in the parish profiles. Though the churches are separate in location and we are different congregations we work well together for mission, and have common hopes and aspirations for the communities in which we serve. Being part of the same developing Mission Community means that there are plenty of occasions when we can get together for joint services and events throughout the year.

The Loughrigg Team

The new Team Rector will have primary responsibility for the 3 parishes of St. Mary's Ambleside, Holy Trinity Brathay and Holy Trinity Langdale.

Our current ministers are Rev. Nick Hallam (Self-supporting Team Vicar who also ministers in the Hawkshead Benefice), Rev. Jane Natrass (Self-supporting Curate) and Rev. George Wrigley (Retired priest with PTO).

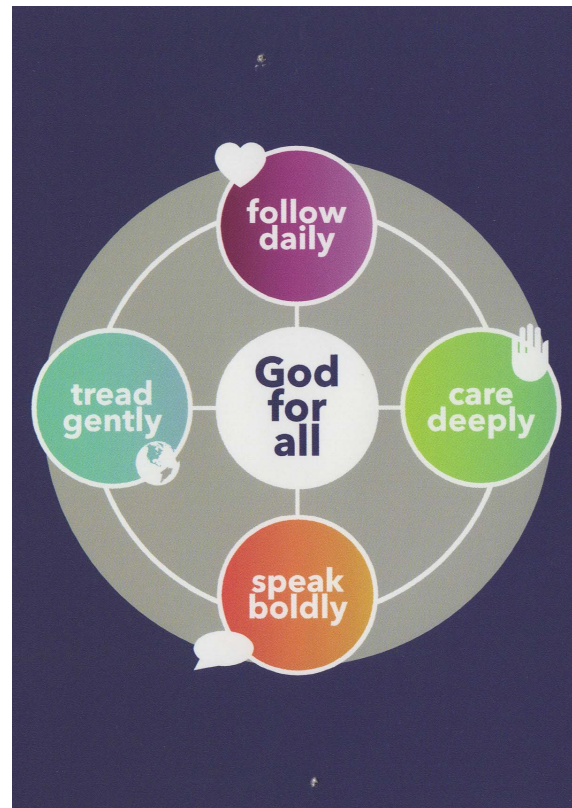
Central Lakes Mission Community and Ecumenical Partnership

St. Mary's is in a formal Local Ecumenical Partnership with Ambleside Methodist church and is part of a wider Central Lakes Mission Community.

<https://www.carlisle-diocese.org.uk/central-lakes/>

Contents Page

- ⇒ Our hopes for the new Rector
- ⇒ St Mary's Church, Ambleside Profile
- ⇒ Holy Trinity Church, Brathay Profile
- ⇒ Holy Trinity Church, Langdale Profile
- ⇒ Ambleside Vicarage
- ⇒ Central Lakes Mission Community
- ⇒ Financial accounts (separate appendix)



Living Lord,
as we offer to you
our common life, refresh our vision
that we may know your will
and seek to follow in all your ways.
May we **follow daily** as your disciples,
care deeply for one another in
community,
speak boldly your gospel words of love,
and **tread gently** as faithful stewards of
your goodness.
We ask this in the power of your holy
name,
as Creator, Redeemer and Sustainer
of our lives,
today and for ever.
Amen

Our hopes for the new Rector

Overall our hopes are that the new Rector will have a deep personal Christian faith and a pastoral heart and will provide:

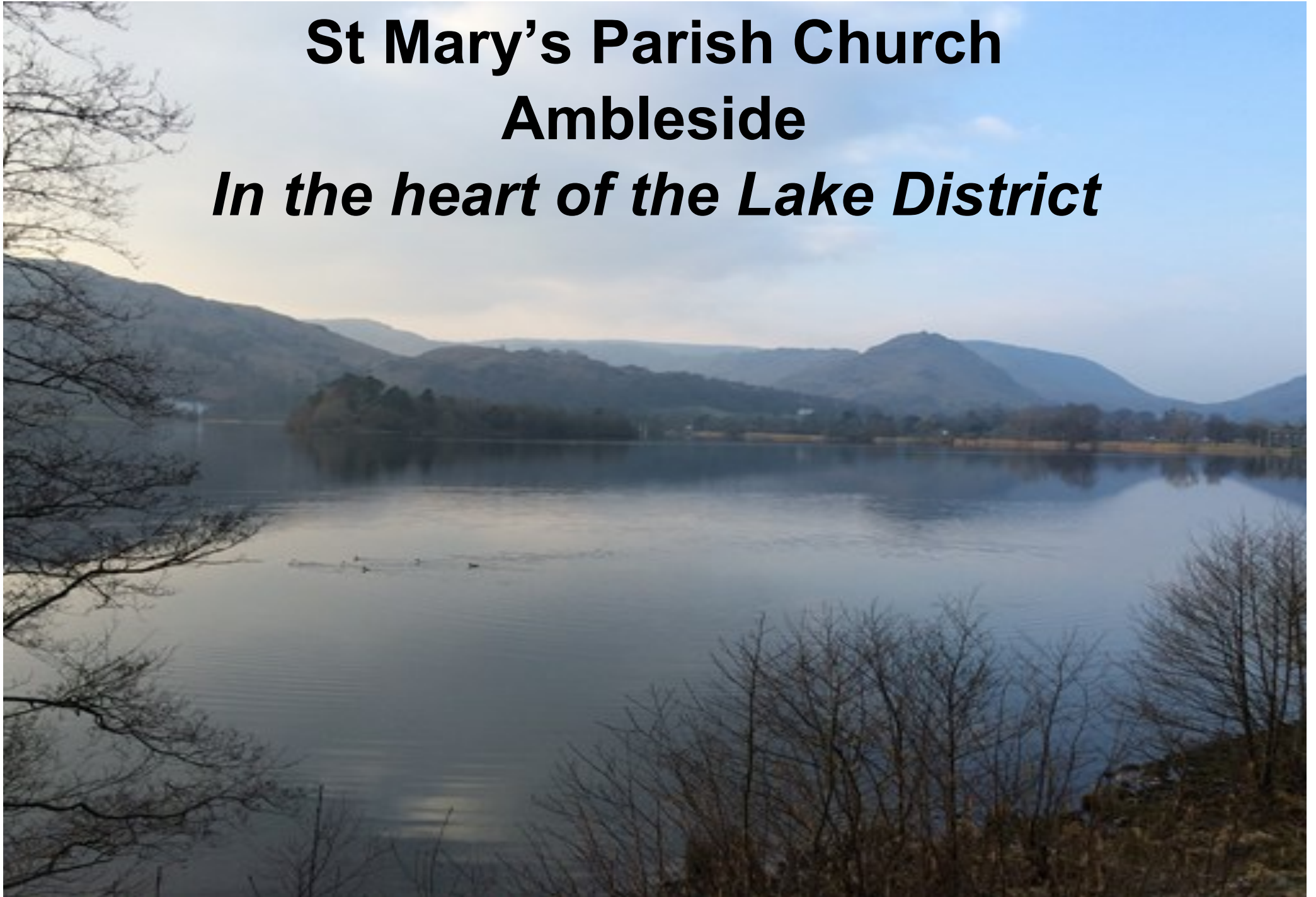
- vision and leadership for mission
- teaching to deepen our spirituality
- worship (in a variety of styles, including contemporary and BCP) to help us grow as communities of faith so that we are enabled and equipped to live the Gospel and to serve God and our communities.

We affirm the diocesan ecumenical 'God for All' initiative which describes the vision for helping everyone in Cumbria discover more of God and God's purpose for their lives. In order to help put this initiative into practice, we are part of a developing local Mission Community and also a group called Churches Together in Ambleside District (CTAD). Ecumenical ways of working are important to us in the Loughrigg Benefice.

Therefore, our further hopes are that the new Rector will:

- be willing to work collaboratively with other clergy and lay colleagues within the Loughrigg Benefice, CTAD and the wider Mission Community
- be able to enjoy ministry in this very rural area in and around the vibrant town of Ambleside, with a mix of local people and a great many visitors during the year. It is essential to be a car driver.
- have a desire to work with and develop the gifts of the willing laypersons in each parish

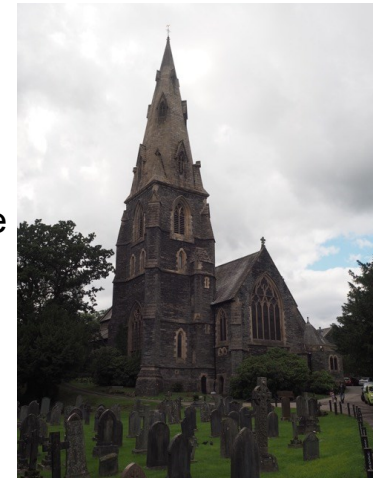
St Mary's Parish Church
Ambleside
In the heart of the Lake District





Thank you for looking at our Parish Profile. In this we aim to give you a sense of:

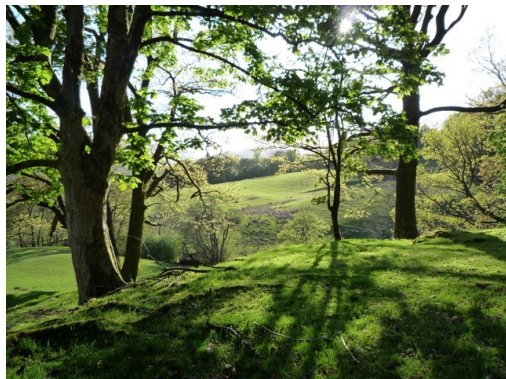
- ◇ What it's like being here in Ambleside
- ◇ The kind of church we are and something of where we are at and our aspirations
- ◇ Some of the other responsibilities that come with the job



We all love living in this beautiful part of the world with lots of opportunities to explore the mountains, rivers and lakes.

Every season is so different and we think the season in our church life will bring joy, challenges and hope.

Set within the Lake District National Park and World Heritage Site, Ambleside is a small town with a population of about 3000 – this swells to 11,000 in the summer.



Many businesses are linked to tourism. In the past this has brought into the area many itinerant international workers often on low wages. At present many businesses are struggling to recruit staff.



Cumbria University has a campus based in Ambleside specialising in Outdoor Studies: Conservation: Forestry: Tourism and Geography. The former Rector acted as the honorary University Chaplain.

A Medical Centre is based in the village.



There is a variety of accommodation including many linked with hospitality, 3 small housing estates, 1 sheltered housing scheme and many private houses. There are 4 developments for those aged over 55. Many of the privately owned houses are second homes.

Within the grounds of St. Mary's church we have Ambleside Parish Centre. Originally funded through various grants and donations including the Anglican and Methodist church, the Parish Centre is a separate Limited Company and both the Anglican and Methodist churches have a considerable involvement through its management, financing and volunteers. It is involved in several community projects.

At St. Mary's we have several trained counsellors who work from the Parish Centre in a charity called Cedar Counselling Cumbria.



Ambleside C of E Primary School is adjacent to the church and has links to St. Mary's with the Rector and parishioners involved as governors and with school activities. It is anticipated that the new Rector will build on this relationship.

The Rector has responsibilities to be on the Kelsick Trust, Ambleside Welfare Committee and the Parish Centre Board.

The Vicarage is a 5 minute walk from the church. It is a detached 4 bedroom property with a large rear garden, a double garage and off road parking for several cars.



There are good bus links through the village with the nearest rail station in Windermere (5 miles).

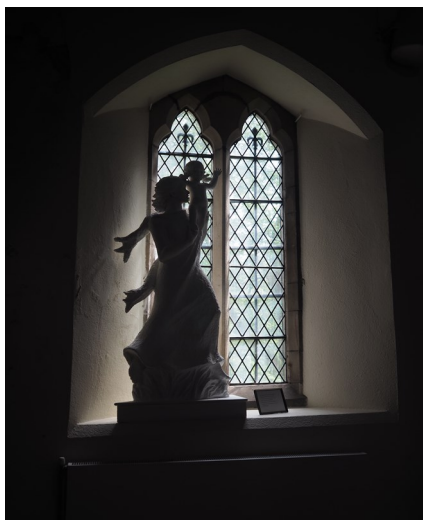
St. Mary's Ambleside

The church was built in 1854 in a striking Gothic style made of local stone. The tower contains a ring of eight bells, which are in regular use. An unusual feature is a large mural from 1944 depicting the Rushbearing Ceremony which takes place on an annual basis and attracts many local families.

The church was re-ordered in 2010 to give a more contemporary and flexible space seating up to 350 people. The average Sunday attendance is normally between 40-70 but the church can be full on special occasions such as the Rushbearing, Christingle and normal festival services. The church is open daily to visitors for prayer and viewing.

St. Mary's is presently responsible for a graveyard of the former Parish Church of St Anne's on Kirkstone Road, Ambleside, which is in the process of being closed for burials. The former Church was converted into private dwellings in the 1980s.

St. Mary's Church has been Open Evangelical in tradition. It is regarded by many local people as "their church".





We see ourselves as a welcoming church with hospitality being an integral part of our ministry. This is linked to a significant number of visitors each Sunday – some of these look on St. Mary's as a valuable part of their Christian life.

Many of those looking around the church come from abroad and special effort is made to make available a variety of publications about our faith in different languages.

We have a very committed core of Christians and about 46 people worship regularly. This number is augmented by visitors, many of whom are in the area on holiday.

In worship style, St. Mary's occupies a middle ground within the Anglican framework using Common Worship.

There is a desire to see family involvement though we are aware that this has diminished over recent years.



St. Mary's Ambleside, Holy Trinity Brathay and Holy Trinity Langdale have open graveyards and therefore there are often funeral services that include burials.

St. Mary's practises open baptism with a Baptism Policy which:

- ◇ Fosters integrity of the parents, godparents and congregation in a baptism using the Baptism liturgy.
- ◇ Significantly facilitates the active engagement of the church with the village families and fosters a spirit of love and spiritual concern for all babies and children in the parish.
- ◇ Encourages and nurtures the faith of those involved in this sacrament.

We welcome the marriage of those in the parish and from elsewhere who are able to fulfil current requirements regarding local links. We are open to the marriage of divorcees at the discretion of the clergy.



We are keen to continue exploring:

1. Prayer Ministry as part of our morning worship and a wider part of church life.
2. New patterns of worship e.g. Walking Church and contemporary forms of worship.

St. Mary's partners with Network Youth Ministries and holds a monthly youth group, led by Chris Mason the Network Youth Leader.

The Parish magazine of Ambleside and Brathay is distributed to every household in the two parishes and provides the community with information about local events and church news.



Priorities for St. Mary's

We are a people who look forward with anticipation for change and growth. We are not content with the status quo where many in our town feel little connection with St. Mary's beyond baptism, marriage and funerals. We hope our new Rector will be willing to walk this journey of change and growth with us, so that our church becomes a more relevant place in encountering God through our Christian faith and respond to the needs we see among us.



At present we have several midweek groups including two study groups - both held via zoom, a weekly prayer group and a meet-up where we hope to develop more opportunities for sharing our faith, bible study, prayer and prayer for healing.

We hope to encourage people of Ambleside to see St. Mary's as part of their life journey in Baptism, Thanksgiving, Marriage and Funerals to show the love of Christ to all who come our way.



The Pastoral Team is a vital part of our outreach, and needs the support and encouragement of the Rector.



We look forward to greater local family involvement along with young people and students. We have a desire to explore how to engage with this section of our community and seek new expressions of church that will draw families to the Christian faith.

We see the importance of working with the Parish Centre and Primary School – encouraging and building on the links between the church and these close neighbours.

We embrace local events – Rushbearing, Christingle and the Christmas Lights celebration – these are special for the wider community and we see this as an opportunity to celebrate and be a witness to our faith.

We encourage the use of the church building for organisations e.g. Lake District Summer Music Festival.

Holy Trinity Church Brathay



“There is no situation out of the Alps, nor among them, more beautiful than that where this building is placed”

*Wordsworth’s reflections on the church at Brathay,
written in a letter to his friend Mr Kenyon in 1837*

A warm welcome to

BRATHAY PARISH PROFILE

Our mission statement is supported by the day-to-day activities of the Parish and its Parishioners.

Holy Trinity was built in 1836 under the patronage of Giles Redmayne of Brathay Hall. The hilltop site was recommended by William Wordsworth who said of it *'There is no situation out of the alps, nor among them, more beautiful than where this building is placed'*.

Later additions were made in 1905, and in 2011 a major restoration of the Church took place thanks to a very generous benefactor.

The parish is small, comprising mainly of retired and semi-retired people and second homeowners, with many properties let for holidays. There is also a neighbouring caravan site and Brathay Hall which is a professional development centre.



The present congregation comes from the surrounding villages and is boosted Spring through to Autumn by visitors to the area and residents of the caravan site. They attend Brathay as they appreciate the traditional services of The Book of Common Prayer and the King James Bible. We are a friendly caring church based on traditional values. We are corporate members of the Prayer Book Society. We have an open baptism policy and divorcees can marry at the discretion of the incumbent.

Members of the congregation are generally keen to be involved in the running of the Church, as Churchwardens, sides people, assisting at communion, reading lessons, leading intercessions, flower arranging, and caring for the fabric of the building.

Holy Trinity has a strong musical tradition. The choir is much appreciated. As well as a newly restored organ, the church has a Boston Steinway piano. The Church is sometimes used for concerts - some organised by members of the congregation to raise money for our mission partners and others by outside organisations.

The hymn '*O Perfect Love*' was composed for a wedding held at Brathay.

The bells were cast by Thomas Mears of Whitechapel, London. Due to COVID, and then necessary work being done on the tower, the bells have not been rung for some time. They used to be rung every Sunday and visiting groups of bell ringers were very welcome. The work now complete, it is hoped that the bell ringers can return on a regular basis.



The Church Grounds are part of a Woodland management scheme which actively inspects the trees regularly. We have an abundance of wildlife and the 37 different types of grasses. The bird population includes robins, wrens and nuthatches and on the adjacent river dippers, kingfishers and otters can be seen. Just over the edge of the Church property can be found one of the only two known specimens of a crinkly leaved beech

tree to found in this country. This tree has recently been propagated by a Dutch company who have included the name of Brathay in the Latin name of the tree.



Many comments in the visitors' book refer to the peaceful atmosphere of the Church and surrounding area.

The Church Hall was renovated in 2011 thanks to the benefactor. In the past it has been used for a variety of purposes, such as baptism, wedding, and funeral receptions and people hire the hall for private events. Parish away days, meetings and marriage preparation courses have all been held in the hall.



Since Covid the hire of the hall had fallen off. However, we now have two regular monthly bookings and individual bookings are picking up as we head into Spring.

There is a video link with the Church, and this is useful for large congregations and musical events. Audio Visual equipment is available, and DVDs can be played on a

large screen, making the Hall most suitable for presentations and Film Shows. We now have full internet access at the Church Hall which we believe will enhance the letting potential once more.



We have a weekly Coffee Morning, and this is well attended by locals and visitors. We hold our PCC meetings in the hall and we regularly hold parish fundraising and social events including the harvest supper, summer barbecue and Christmas lunch.



The Church Cottage adjoining the hall is let on a long-term tenancy, the rent going towards the running costs of the hall.

Community and Mission is an important part of our Parish ethos and those who are able regularly join in with events in the wider community.

These include the Community Choir; Pilgrimage Walks; Fundraising for Mission; Walk of Witness; CTAD Film Club, Easter Passion Play; Coffee Mornings and BBQs; Week of Christian Unity, 5th Sunday Service and Zoom prayer and Bible meetings.

Looking to the future

The congregation of Brathay are aware that the Church of England needs to attract young people and families. However, we also consider the needs of our elderly friends who feel that the more gentle and familiar words and phrases of the Book of Common Prayer help them to practise their lifelong Christian faith. So this is one of the many reasons why we feel it is important to continue offering our traditional style of service.



We not only meeting together in worship but also providing a warm, social hub where young and old can come together to enjoy communion, share their lifetime experiences, and encourage residents and visitors alike to become part of our church family.

We ask that a new team rector will respect this and lead us in worship with understanding of our needs and with love and enthusiasm.

LANGDALE PARISH PROFILE



The parish of Langdale is in the centre of the Lake District National Park and consists in the main of the Great and Little Langdale valleys.

The area has become very popular with visitors over the years so tourism plays an important role and farming is still important.

This is a very rural area and there are four centres of population with a mixture of permanently occupied properties, second homes and holiday lets.

The main village in the parish is Chapel Stile in Great Langdale, where Holy Trinity Church and Langdale School are situated. In the village are also the Langdale Co-op, with a café above, an inn and a part time Post Office hosted in the village hall. Further up the valley, there are a number of small-tenanted hill farms owned

by the national Trust, a camp site and a couple of hotels.

Elterwater village is situated near the entrance of the valley. Much of the village is taken up with second homes and holiday lets. It has a small cafe, an inn and a bowling club. Between Elterwater and Chapel Stile is the Langdale Timeshare complex, including the Langdale Hotel.

On the edge of the parish is Skelwith Bridge, a small community, with a hotel, a number of houses, a chalet park and a tea room/gift shop called Chesters.

The parallel valley of Little Langdale has a mixture of NT tenanted hill farms, permanently occupied properties, second homes and holiday lets.

Holy Trinity Church

Holy Trinity in Chapel Stile was built on the site of earlier chapels and consecrated in 1858, becoming the parish church of Langdale when the parish was created in 1863. It is built and roofed with locally quarried slate and stands in an imposing position above the village. The church has pleasing proportions and is in good repair. The church has wooden



pews and a two-manual pipe organ. Most of the windows are by London makers, but the one depicting St Francis was designed and manufactured in the valley and is much admired.

Services in church are held twice a month at the moment; one service of the word and one Holy Communion service. We currently have 35 people on the Electoral Roll, both resident and non-resident. Attendance at services is around 20 or less and this number includes church family members and visitors.

The tower of the church houses a peal of six bells. An Ellacombe ringing frame was installed enabling one person to ring when full circle-ringing is not possible. At the moment it is set up for the Ellacombe ringing. The tower also houses a James Harrison tower clock of significant historical importance.

There have been considerable improvements made to the church's facilities over recent years, including changes made to the porch and entrance to allow step-free access to the church and the addition of a small kitchenette, and toilet facilities suitable for use by all.



Little Langdale Chapel

There have been no services held at Little Langdale since late 2019 when the monthly Café-style church for young families ended for the winter break. COVID and other factors have meant that the chapel has not been used since.

The building was used as a lecture room with a caretaker's flat below in 1865 and is not licensed, but permission for Divine Service to be held was given by the Bishop the following year. The lecture room came into use also as a school room in 1872 and this joint use continued until a new school was built in 1904. Services have continued over the years since then and the flat below is rented from the PCC for permanent occupation. The PCC is responsible for the upkeep and maintenance of the property. There are developing hopes and plans to use the Little Langdale chapel as a place to provide drinks and refreshments, perhaps monthly at first, and also to display local crafts.

Church Schools in the parish

Langdale CE Primary School (aided) is situated in Chapel Stile. There are 33 pupils on roll at present and the school was judged a good school by OFSTED in November 2021. There is a regular school assembly with the Team Rector and the children also come up to Langdale Church for key services during the year. The children have also joined with those from Ambleside Primary School at St. Mary's, Ambleside for Experience Harvest and the cathedral prayer labyrinth.

Ambleside Vicarage



The Vicarage was built in the grounds of the original Victorian vicarage to St Mary's in the 1980's and fronts the residential area of Millans Park. A bright, modern home with four bedrooms set out on two floors over an integral garage.

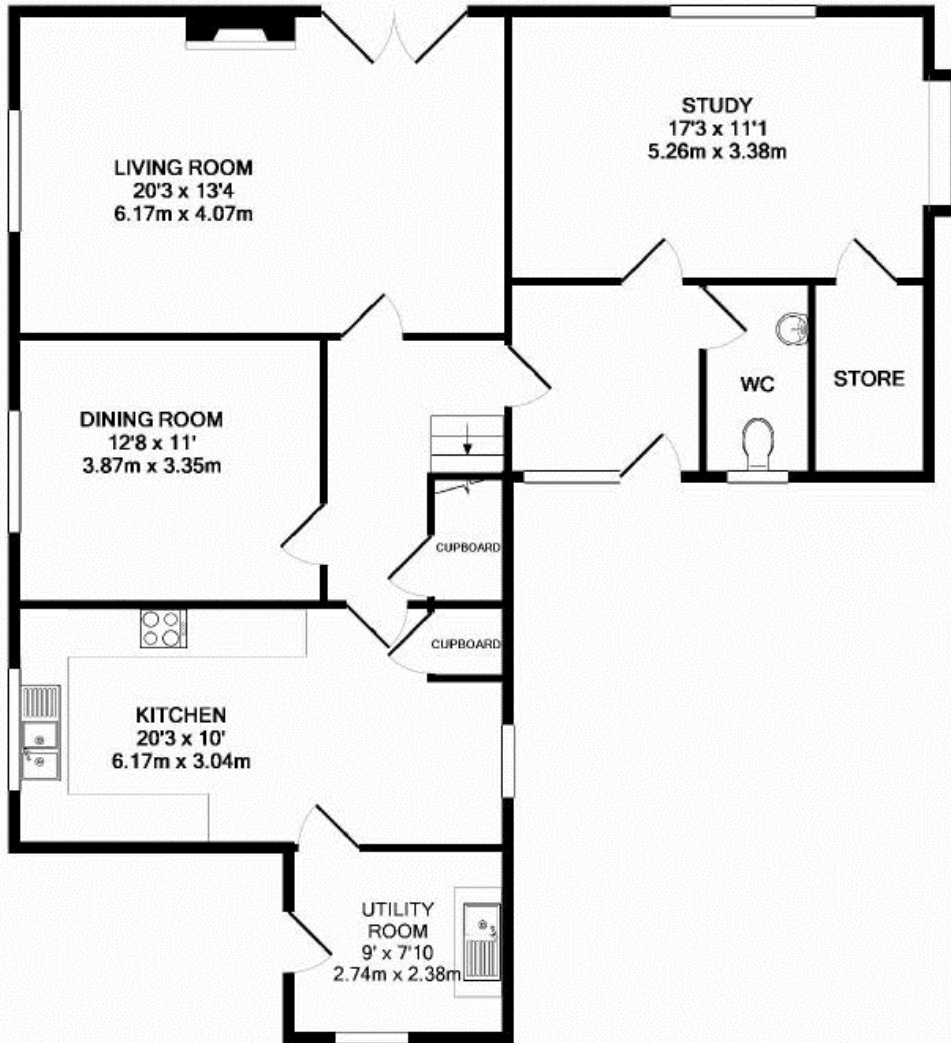
Situation

Millans Park is an established and well regarded residential area just off the centre of Ambleside. Glimpses of the surrounding fells through the mature trees provides a real Lakeland feel to the location. Within a couple of hundred yards walk there is St Mary's Church and the adjacent primary school, Rothay Park, sports facilities, tennis courts, cinema and service shops.

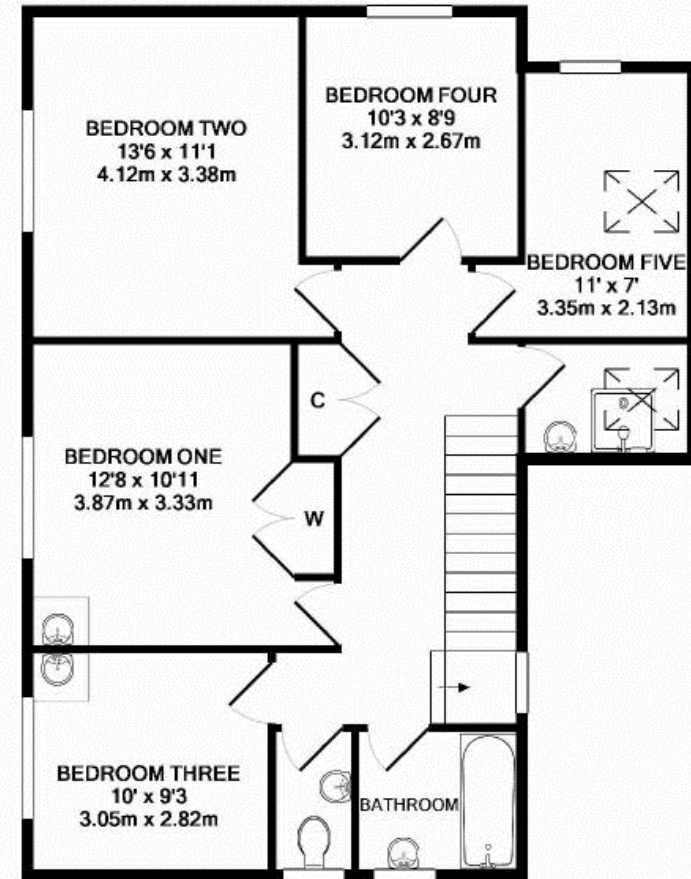
Description

The house itself sits on a generous natural garden plot with rock outcrops and good screening from mature shrubs and trees. The house has modern fitments throughout, double glazing and gas fired central heating system.





GROUND FLOOR
APPROX. FLOOR
AREA 1101 SQ.FT.
(102.3 SQ.M.)



1ST FLOOR
APPROX. FLOOR
AREA 830 SQ.FT.
(77.1 SQ.M.)

TOTAL APPROX. FLOOR AREA 1931 SQ.FT. (179.4 SQ.M.)

Whilst every attempt has been made to ensure the accuracy of the floor plan contained here, measurements of doors, windows, rooms and any other items are approximate and no responsibility is taken for any error, omission, or mis-statement. This plan is for illustrative purposes only and should be used as such by any prospective purchaser. The services, systems and appliances shown have not been tested and no guarantee as to their operability or efficiency can be given

Made with Metropix ©2011

Central Lakes Mission Community



A group enjoying walk 4 of the Pilgrimage Project

The Loughrigg Team Ministry is part of the ecumenical Central Lakes Mission Community, which also comprises of areas around Hawkshead and Grasmere. Colleagues include John Dixon (Vicar of Hawkshead, Sawrey, Rusland and Satterthwaite), David Wilmot (Rector of Grasmere and Rydal and chaplain to Rydal Hall), Nick Hallam (self-supporting minister, licensed to both the Loughrigg Team and the Hawkshead Benefice) Grace Cauldwell (Methodist Superintendent Minister) and Matt Hirst (Minister, Hawkshead Hill Baptist Chapel). We also have two curates joining us in the summer. There will also be opportunity to work alongside other Christian groups as part of Churches Together in Ambleside.

As well as providing friendly and supportive colleagues, the Mission Community has given us opportunities to do things, which none of the individual churches would have been able to do by themselves. For example, we have been able to explore different styles of worship from Contemporary Worship to Choral Evensong; we put on a very successful Passion Play; there is a Mission Community choir; and the church buildings are all linked together by a series of reflective walks, comprising our Pilgrimage Project (see [here](#) for details).

Rydal Hall (see [here](#)) is part of the Mission Community and provides a very good venue for events.



The 2022 Passion Play

Windermere Deanery

The Mission Community is part of Windermere Deanery, which among other things, provides a small but friendly and supportive clergy chapter, which meets monthly. Sometimes we have a guest with us and sometimes we use the time for fellowship.