



DIOCESE OF CARLISLE

PRIEST-IN-CHARGE,
BENEFICE OF ST MARY THE VIRGIN,
WALNEY ISLAND & BENEFICE OF
ST JOHN, BARROW-IN-FURNESS
& **EVANGELISM ENABLER,**
BARROW MISSION COMMUNITY

2022

St Mary's
WALNEY ISLAND

BARROW
MISSION
COMMUNITY

**God
for All**

Contents

Why Barrow?	3
Will you join the adventure?	4
Evangelism Enabler	5
Parish Profile - St Mary the Virgin, Walney Island	6
Welcome to Walney	7
Life at St. Mary's	10
Our church	10
Our other buildings	11
Worship at St. Mary's	12
Our special services	12
Our congregation	13
Church organisations and events	13
Parish policies	14
Our financial position	15
Staffing	15
Our PCC	15
Carlisle Diocese	16
Our relationships with other churches	16
Parish Profile - St. John the Evangelist, Barrow Island	17
Barrow Deanery and the Barrow Mission Community	19
Housing for the incumbent	20
The person we are praying for	21





"IT'S NOT JUST THE ABUNDANT NATURAL BEAUTY OF THE AREA, OR THE LOVELY BUILDINGS, OR THE EXTRAORDINARY COASTAL LIGHT, OR THE NATURE RESERVES...

...IT'S BARROW ITSELF, THE FRIENDLIEST, MOST UNASSUMING PLACE I'VE EVER VISITED, LET ALONE LIVED IN.

I NEVER GO ANYWHERE WITHOUT SOMEONE WANTING A BRIEF CHINWAG."

- ISABEL HARDMAN,
ASSISTANT EDITOR,
'THE SPECTATOR'

WILL YOU JOIN THE ADVENTURE?

Do you want to minister amongst 'salt of the earth' people in two distinct communities, as together we seek to be 'salt and light' for Christ?

Can you build upon good foundations and continue to help us provide welcoming community, meaningful worship, and accessible Bible teaching that grows disciples?

Will you help pastor a town, not just a congregation, re-evangelising with a Christian faith that is prepared to get its hands dirty?

Do you want to grow new forms of church, but in a place where roots go deep and tradition is precious?

Can you meet us where we are, but enthuse and challenge us to new endeavours?

Will you hold out Christ as grace amongst the grit, as hope for the hurting, and as true satisfaction to those unsure as to what they are seeking?

This role of Priest-in-charge of St Mary's Walney & St John's Barrow Island and Barrow Evangelism Enabler is an exciting and imaginative role, combining the traditional parish roles of two unique localities, with the opportunity to explore new ventures and play a part in reaching the whole town of Barrow as part of a clergy and lay team.

St Mary's Walney Island and St John's Barrow Island are two parishes in the uniquely coastal-and-urban Deanery of Barrow-in-Furness, in south-west Cumbria. Together they serve around 15,000 people. There are six other parishes in the wider town of Barrow, currently resourced with four stipendiary clergy roles, two self-supporting clergy, plus a Network Youth Church Worker and a Pioneer Enabler, as well as ecumenical colleagues and lay readers and ministers.





EVANGELISM ENABLER - BARROW

Sowing the seed of the gospel and growing new forms of church across our town...

This imaginative role has three elements: Priest-in-Charge of St Mary's, Priest-in-Charge of St John's, and Evangelism Enabler, but as the Role Description indicates, all will need to be seen through a missional lens. It is estimated that across the eight Anglican parishes of the Barrow Deanery less than 500 people attend church each week - from a population of over 60,000.

Initially the two Priest-in-Charge roles will make-up 75% of the role, with the other 25% focused on serving as Evangelism Enabler for the town. This will be reviewed annually, recognising that the shape of parish ministry across the town is changing.

As Evangelism Enabler you will lead and enable delivery of outreach and evangelistic activities and events at a town-wide level. As a Mission Community we have particularly identified the area of Ormsgill (parish of St Francis) in Barrow as ripe for a new form of missional church community.



**"A welcoming church sharing the love of
Jesus to make Him known."**



DIOCESE OF CARLISLE

Priest in Charge, St. Mary the Virgin, Walney

Our Parish Profile 2022

Welcome to Walney

Walney Parish is unique. The island is a beautiful place, urban in the centre, but peaceful at the North and South Ends with glorious scenery of the Lake District mountains and sweeping open vistas over Morecambe Bay.



Walney Island is a residential suburb of Barrow-in-Furness connected to the mainland by Jubilee Bridge. The Parish is bounded by the shores of the Island which is 11 miles long and a mile wide. Most of the population live in Vickerstown, the central part of the island, where there is a variety of housing built at the turn of the last century to house shipyard workers. Nowadays the shipyard employs about 9,500 workers building submarines and has a steady order book for the foreseeable future.



There are two old villages - North Scale in the north of the island and Biggar Village in the south while a residential mobile home site is situated on the west of the island at Earnse Bay.

The population is about 12,000. The people of Walney are extremely loyal to their island and church and justifiably proud of what they have.



Walney has a comprehensive school with about 480 pupils. In addition, there are two state primary schools, one state junior school and one state infant school on the island together with St Columba's Roman Catholic primary school. George Hastwell Special School caters for pupils from Walney and the surrounding area. Walney Central Nursery and two other schools have nursery provision. Although there are no Church of England schools on Walney, St. Mary's has well-established links with the Island schools and we frequently welcome visits from them.

Walney also has a public library, two community centres and a medical centre, and a sprinkling of shops including a small Co-op with a Post Office and a small Tesco.

We are fortunate in having a frequent bus service over the bridge to Barrow where there are more shops, several large supermarkets and other services including a larger library, cafés and restaurants, a cinema and The Forum Theatre. Trains from Barrow Railway Station connect with Carlisle, Lancaster and Manchester.

Recently, Barrow has secured government re-development funding which will help to upgrade the town centre and provide new opportunities and facilities for the Barrow community.

Four pubs can be found on Walney, all of which serve food. Two are in Vickerstown and one each in North Scale and Biggar.



A large expanse of grass stretches along the coast at Biggar Bank with a small playground and an active community run Hub and café. Vickerstown has a public park with a children's playground.

The North End of the island is a nature reserve which has sand dunes, a natterjack toad colony and wonderful beaches. BAE Systems use a small private airfield in the north of the island where small aircraft arrive and depart once or twice a day. At weekends the airfield is home to a gliding club.

The South End of the island is grazing farmland with a large holiday caravan site with many static vans.

The southernmost end of the island is an internationally renowned nature reserve and bird sanctuary with sign-posted walks past the Lighthouse where a large grey seal colony (the only one in Cumbria) can be found on the shore. This area is a Site of Special Scientific Interest.



Leisure activities on Walney include an 18-hole golf course, crown green bowling clubs, boating and fishing clubs, a cricket club, football and rugby clubs and a riding school in Biggar village. Walney, with its superb variety of beaches, is a great place to walk.

Over the bridge in Barrow, football and rugby clubs, a large public park, a number of interesting Victorian buildings and the astonishing Furness Abbey are to be found



Walney is on the edge of the Lake District with its renowned hills, mountains and lakes to enjoy. Coniston and Windermere are about 25 miles away.



A recently produced video has been made to celebrate Barrow and Walney. It gives a good impression of this part of the world and can be found on YouTube at:

<https://www.youtube.com/watch?v=tQRH41v07FM>

Life at St. Mary's

Our church

Following a church 'Away Day', we looked again at our mission on Walney. After much prayer and discussion we revised our Mission Statement and Values which summarise what we are about.

We aim to be:

'A welcoming church sharing the love of Jesus to make Him known'.

To achieve this we will:

- **Be Jesus-centred**
- **Grow Disciples**
- **Serve Others**
- **Promote Partnerships**
- **Care for God's creation**

We are fortunate in having a beautiful church to worship in.

The earliest recorded reference to a church building on the island is shown on Saxon's Map of Lancashire dated 1577. It was not until 1876 that a church is mentioned as St Mary's.

In 1850 the Vestry met and considered "what steps should be taken respecting the falling fabric of the said chapel". A public subscription opened to raise funds to rebuild and enlarge the said place of public worship. The new chapel to seat 185 was opened in February 1853.

With the building of Vickerstown, and the population increasing, from 500 to 5000 in the first few years of the 1900s, a much larger church was needed. In 1907 the foundation stone was laid. The partly built church was dedicated in 1908. The old chapel was used for a time until it was taken down. In 1930 the church in its present format was finally completed.

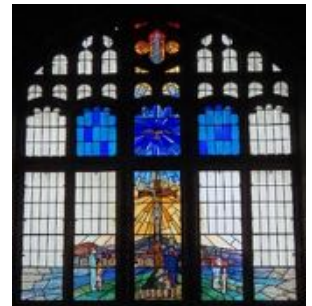
The present church seats approximately 250 people and is in good condition overall although it is a constant struggle to keep it in good repair. We had a Quinquennial inspection in 2021.

We have a good sound system and data projection facilities.

Before Covid we had a weekly Parish Evening which provided an opportunity for parishioners to make contact with us about any request or to seek information. We hope to reinstate this in due course.

We communicate with the community in a variety of ways including our weekly Notice Sheet, our church website, a Facebook group of 300+ members, YouTube and *A Church Near You*.

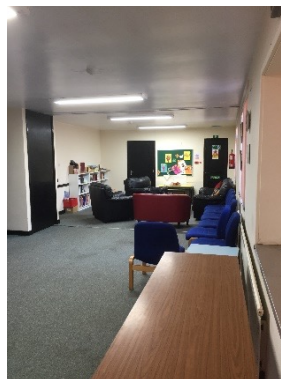
The churchyard has been closed for new burials for many years



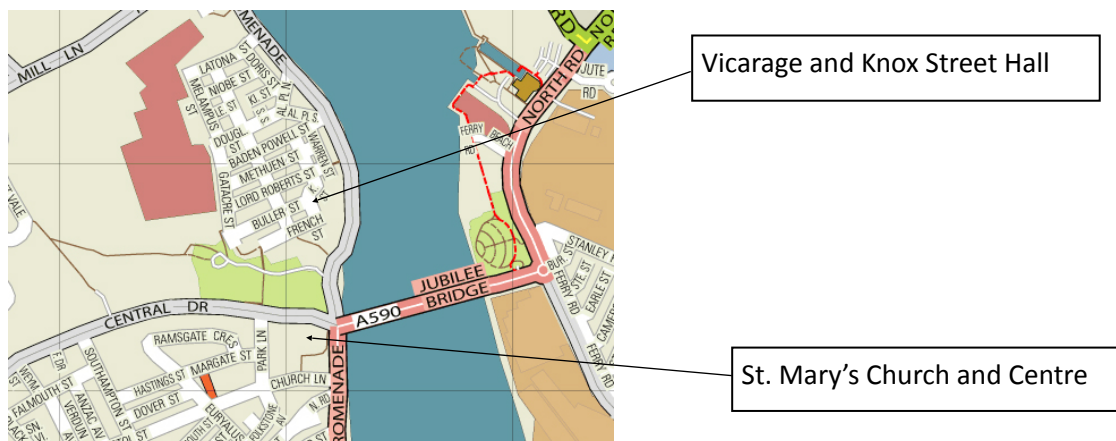
The churchyard has been closed for new burials for many years and, although the Local Authority has responsibility for its maintenance, church members work hard to keep it looking attractive. St. Mary's has a well-maintained Garden of Remembrance into which ashes may be interred.

Our other buildings

We are very fortunate to own **St. Mary's Centre**, built in 1981, adjacent to the church and car park which is the hub of church life for church and community activities. It consists of a large hall, a smaller but substantial meeting room which can be divided and good kitchen facilities. The Centre is used for church meetings and is also available for community groups and individual hire. In the photograph below, the hall is set out for a wedding reception.



Knox Street Hall, close to the vicarage, is another property owned by St. Mary's and is used by the joint Walney churches' Beavers, Cubs and Scouts groups. A small group of dedicated people carried out the task of obtaining funding and put in many hours of hard work to refurbish the hall which is now also available for wider use by the community. The adjacent and much smaller Lower Knox Street Hall, which is no longer in use, is currently is being sold to aid parish funds.



Worship at St. Mary's

The parish can best be described as 'middle of the road' in tradition with Parish Communion as the main act of worship on Sundays. The pattern of services has changed in recent times partly because our vicar was also appointed Priest in Charge of St. John's, Barrow Island, and partly because of the Coronavirus pandemic and the interregnum. This has meant that we have had to be flexible and creative in our pattern of worship. One positive outcome has been the increased involvement of lay members of the congregation in leading worship.

A small Sunday School used to meet during the 9.30am service in the Choir Vestry. We currently have very few children and one of our aspirations is to attract more young people into church.

On the second Sunday in the month there used to be an All-age Service with uniformed organisations attending. If this was to be re-started it would be an opportunity for growth.

The congregation meets after church for coffee and a chat in the Centre. This is a good opportunity to welcome new people, meet up with old friends and support each other.

We have a Pastoral Team led by our Local Lay Minister for Pastoral Care. The Team also undertakes pastoral visiting and keeps in touch with people by phone. In addition, one other person is licensed to administer Home Communion.

Whilst the church was closed during the pandemic, we recorded some on-line services with various members of the congregation participating.

We have many requests for baptisms and there is obvious potential to grow our church family. At the moment, baptisms take place on the first two Sunday afternoons each month. Baptism families are invited to our weekly Toddlers Group.

Before the interregnum we used to run a popular monthly Messy Church. This is an obvious area for development as we know that families would support it.

We also have a number of weddings and funerals each year.

Our special services

On Ash Wednesday we have Parish Communion with Imposition of Ashes.

On Palm Sunday, an ecumenical procession from Walney Library to St. Mary's takes place before the morning service.

We have a reflective service on Good Friday and joyful celebration services on Easter Day and at Pentecost.

In July we hold a Sea Sunday service and in October our Harvest Service.



We have an All Souls Service on the nearest Sunday.

Our Christingle Service is hugely popular to the extent that in 2019 we had to hold two! This illustrates the support we have from the wider community.

Several of the schools hold their Nativity Service in St. Mary's.

This year we are holding a special service and afternoon tea for baptism families and God Parents.

We are looking forward to developing our worship and the range of our services with our new vicar.



Our congregation

We are a warm and welcoming church community. While many (but not all) of us are elderly, we are all young at heart! We would love to have more families worshipping with us and look forward to finding opportunities to encourage young people into our church family.

The majority of our congregation live on Walney but several members of our church family travel from Barrow and beyond.

We have an average congregation of about 45.

The number on the Electoral Roll is 75.

Parish demographic data is available on the Church of England website. The deprivation rank for Walney Parish is 2,359 where 1 is most deprived and 12,382 is least deprived



Church organisations and events

We have a monthly Prayer Group, Advent and Lent courses, and meet occasionally for Bible Study sometimes with the local Methodist Church. Toddlers Group meets weekly. A variety of fundraising and social activities take place including Coffee Mornings, Christian Aid Ploughman's Lunch and the popular annual 'Tunes and Spoons' event.

The Barrow Mission Community holds a weekly prayer meeting.

In association with other denominations, beavers, cubs, scouts, rainbows, brownies, guides and rangers are all very active. Some groups meet in Knox Street Hall and some in St. Mary's Centre.

Parish policies

Baptism

St. Mary's has an open policy for infant baptism. There is a Baptism Working Group who have produced a booklet of information for parents and who run Baptism Preparation Evenings for parents and God Parents. We are re-instating keeping in touch with baptism families by sending cards on the anniversary of their child's baptism.

Confirmation

Confirmation of children is normally for those aged 12-15.



Marriage of the Divorced

In the past the vicar has considered each case individually and has in most cases offered remarriage after divorce.

Safeguarding

The welfare of children, young people and vulnerable adults is an absolute priority for our church. Safeguarding shows God's love in action and in churches demonstrates safety and security, where abuse and mistreatment of others is not tolerated. The PCC has a full safeguarding policy and appropriate procedures are in place.

Priests (Ordination of Women) Measure 1993

The PCC has not passed any resolution under the above Measure and would welcome enquiries and applications from all.

Our financial position

Total annual income in 2021 was £55,828 (Restricted funds £10,614 and General Funds £45,214.)

Annual Income from Direct Giving including tax refund of covenants was £37,667.

The Diocesan Parish Offer paid in full for 2021 was £26,550. We originally offered £22,950 but increased this during the year to £26,550.

We pay clergy expenses in full each month. Postage, stationery and telephone are reimbursed.

The parish supports charities as the need arises and in particular 'Christian Aid' and 'The Children's Society'. The PCC is currently reviewing the church's charitable giving.

Staffing

We have a paid cleaner for St. Mary's Centre.

Jonathan Elvy is our Licensed Lay Reader and Marie Jeffrey is our Local Lay Minister.

The church is cleaned on a voluntary basis by Monica Pugh.

Our PCC

The PCC meets bi-monthly.

Our Churchwardens are Maureen Dale and Rhona Teale.

Roger Burns is PCC Secretary and David Hollis is Church Treasurer:.

The Standing Committee plans the PCC agendas and enables business to be transacted between meetings if necessary.

In addition, the PCC has established several sub-groups including:

Finance, Buildings and Property, Worship, Baptism, Communications, and Social.



Carlisle Diocese

Our vision is:

To release the whole people of God for the whole mission of God for the transformation of Cumbria in the name of Jesus.

We have 240 parishes across Cumbria, embracing areas from the heart of urban Barrow in the south Lakes up to rural Bewcastle in the 'debatable' Border lands.

Our churches range from beautiful historic Norman buildings to modern, purpose-built places of worship.

Cumbria is the first ecumenical county to be formed in England.

Our joint **God for All** strategy, which has recently been refreshed, demonstrates a united commitment for innovative mission, social justice, effective discipleship and the provision of church schools and academies; all to serve our communities and grow God's Kingdom.



The Diocese is led by the Bishop of Carlisle, the Rt. Rev. James Newcombe and supported by the Suffragan Bishop of Penrith, a post which is soon to be announced.

Our relationships with other churches

There are good relationships with all the churches of various denominations on Walney and some shared activities including an Ecumenical Choir.

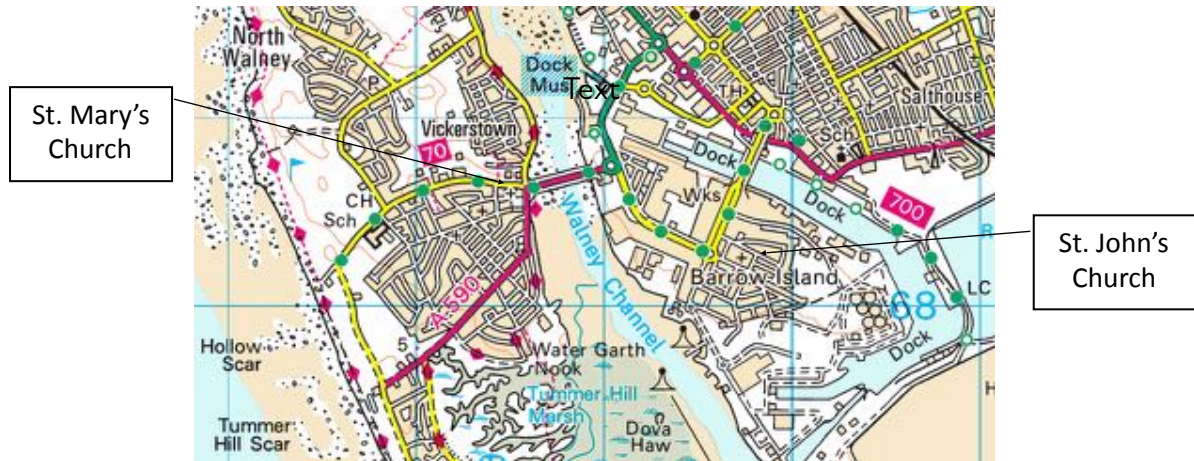
St. Mary's has a particularly long-standing relationship with the Vickerstown Methodist Church on Walney. We had a joint Covenant Service in 2022 and have shared other services and events including Lent courses and Bible studies.



St. John the Evangelist Church on Barrow Island is our nearest church across the bridge and in 2018 our vicar additionally became their Priest in Charge. Although St. Mary's and St. John's remain distinct parishes, the two churches have endeavoured to support each other and occasional joint services and events have been held. We have a joint Sunday service when there is a fifth Sunday in the month.

St. John the Evangelist Parish Profile

The benefice of St. John the Evangelist is a parish situated between the mainland of Barrow-in-Furness and Walney Island.



The community

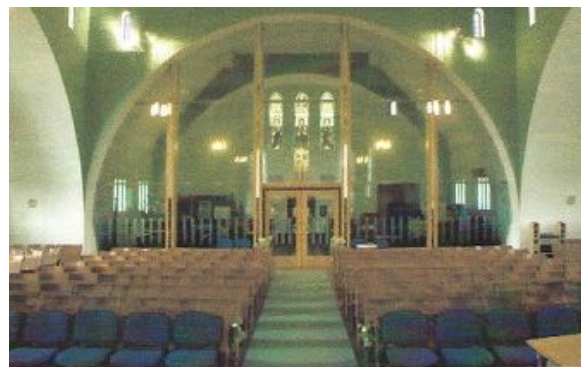
St. John's is a traditional industrial, working-class parish known as Barrow Island, separated from Walney Island and the town but connected by two main road bridges. The Island is occupied in large part by BAE Systems submarine shipyard and Barrow Docks.

The residential areas accommodate a population of approximately 3,000 in tenement blocks, terraced houses and semi-detached houses. There is a very strong sense of community. The people of Barrow Island have known, and in some cases still experience, hard lives. But they do respond with good will to a priest who shows genuine concern for the whole Parish as well as the Church and congregation.

There is a variety of shops and four pubs on the Island and the residents have easy access to the many allotments and recreation areas.

Many of the people on Barrow Island have always lived there. Young couples set up home here and only move as their financial circumstances improve. Many who move still regard St. John's as their church.

St. John's is the only church on The Island. It is a Grade II listed building built in 1935. It is spacious, light and atmospheric. There is a lady chapel in the south transept. The building underwent extensive renovation in 2003 (costing £400,000). There is seating for 240+.



A large recreational/social area has been created by the erection of a permanent glass screen in the nave. This has its own refreshment facility and counter. The area can be used for extra seating when required. There is a well equipped kitchen.

The church has an effective amplification system including an induction loop. The acoustics of the church are remarkable. The organ (James Davis 1802) was refurbished in 1993 and is played for all services by the parish organist who also trains the small choir. The church has disabled access. The number on the Electoral Roll is 25.

Our services

Our Sunday services at 11.00am follow the same pattern as St. Mary's Walney. We use Common Worship for both Parish Eucharist and Morning Prayer and we use *Hymns Old and New*. We hold a said Holy Communion service on Wednesday mornings.

The Parish has no lay readers, non-stipendiary ministers or retired clergy attached. Members of the congregation read lessons and assist with chalice and communion by extension at services or take out home communion.

Our financial position

Total annual income in 2021 was £20,322 Annual Income from Direct Giving including tax refund of covenants was £9,489.

The Diocesan Parish Offer paid in full for 2021 was £9,600.

The parish support for missions and charities was £1,807. We meet clergy expenses.

Many fundraising and social events are held. These are well supported by the congregation and local community. The main groups attached to the church are the monthly Afternoon Tea Club and weekly Craft Circle.

An important part of the budget has always been supporting charities including The Children's Society, Leprosy Mission, Furness Homeless, Local Food Bank and Mission to Seamen (we are a strong maritime community).

Parish policies

Baptism

St. John's has an open policy for infant baptism.

Marriage

In the past the vicar has considered each case individually and has in most cases offered remarriage after divorce.

Priests (Ordination of Women) Measure 1993

St. John's PCC has not passed any resolution under the above Measure and would welcome enquiries and applications from all.

Safeguarding

The welfare of children, young people and vulnerable adults is an absolute priority for our church. The PCC has a full safeguarding policy and appropriate procedures are in place.

The Barrow Deanery and Barrow Mission Community

We are constituent churches within the Barrow Deanery which is one of eleven deaneries in the Diocese of Carlisle. It is the smallest geographically (being comprised of the whole town of Barrow and Walney Island), but the second largest numerically with a population of approximately 70,000. It consists of eight functioning parish churches, including St Mary's Walney and St John's Barrow Island.

At present there are four stipendiary clergy posts, as well as a Network Youth Minister, a Pioneer Enabler, and this vacancy. The Assistant Rural Dean is Rev. Jack Knill-Jones (Team Rector of the North Barrow Team: St Francis and St James) and Barrow Deanery works in collaboration with the geographically much larger Furness Deanery with its 28 churches stretching from Rampside in the south to Coniston in the north.



Along with churches from other partner denominations, together we form the Barrow Mission Community (BMC), a network of 15 churches seeking to work together and think more strategically about how we use our resources for mission, as part of the Cumbria-wide God For All initiative. Our current priorities are increasing our focus on everyday evangelism, praying and listening to God and our communities, deepening discipleship, engaging in social action and ensuring creation care. These resonate well with the Diocesan refreshed God for All strategy.

BMC is led by two joint leaders Rev Robin Ham (an ordained Anglican minister and priest-in-charge of St Paul's Barrow) and Rev Martin Cooper (Pastor of Abbey Road Baptist Church).

From 1st July 2021, Rev Aimee Lynch took up the position as Interim Team Vicar of the Benefice of South Barrow Team Ministry and Associate Priest in the Benefice of the North Barrow Team Ministry. Rev Tony Ford is Priest-in-Charge of St Mark's Barrow. Markus 'Opa' Geibel has been appointed as Pioneer Enabler from 1st September 2021 funded by the Church of England Strategic Development Funding. This role will help BMC to engage with young people and young families and is likely to focus initially on Newbarns on the northern edge of Barrow and Barrow Island.

Housing for the incumbent



St. Mary's Vicarage and the view towards Walney Channel

The vicarage, which overlooks the Promenade and Walney Channel, is in good overall condition and is in a good state of decoration throughout. It was built in 1967 and has gas fired central heating, with an open fire in the lounge.

It has 4 bedrooms, a good size kitchen, a dining room, sitting room, utility room, study and garage. There are two bathrooms upstairs and a cloakroom on the ground floor.

There is a large grassed area at the front of the vicarage which is overlooked by a veranda running along that side of the house. The garden continues at the side of the vicarage and includes a small greenhouse.



Top: The large sitting room outlook to Walney Channel

Middle right: One of the bedrooms

Middle left: The Kitchen

Bottom: The Study



The person we are praying for

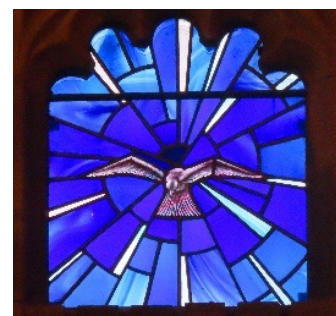
Do you want to minister amongst two friendly, island communities? Can you build upon good foundations and continue to help us to provide a welcoming community, meaningful worship and accessible Bible teaching that grows disciples?

Can you help us each to be:

‘A welcoming church sharing the love of Jesus to make Him known’.

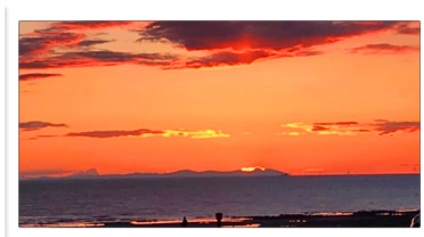
Can you help us to:

- **Be Jesus-centred**
- **Grow Disciples**
- **Serve Others**
- **Promote Partnerships**
- **Care for God’s creation**



We are two friendly, capable and loving communities of Christians looking for someone who:

- can meet us where we are but who will enthuse and challenge us to new endeavours so that we can fulfil our mission
- can prayerfully recognise, develop and use the gifts of others in mission and ministry
- will lead both modern and traditional forms of worship with passion, imagination and creativity
- is committed to sharing God’s word with Christians and non-Christians
- is an inspirational leader and effective enabler who can make the most of existing opportunities, and identify new ones, to grow disciples
- can build effective teams and encourage collaborative working
- is a good communicator, teacher and listener
- has the ability to relate to and inspire people of all ages including children, young people and families
- can help others on their spiritual journey and be a good shepherd for the people of Walney and Barrow Island
- is diplomatic and sensitive to individuals’ needs
- values pastoral care for the people of St. Mary’s and St. John’s and their wider communities
- has good personal organisational skills
- is welcoming, friendly and approachable, has a sense of humour and is full of love for God and people



Thank you for taking the time to read this profile.

If you choose to apply for the position, we look forward to meeting you!

We pray God’s hand will guide you as you read, reflect and pray.

www.walneyparishchurch.co.uk | www.barrowmissioncommunity.com

Facebook: ‘St. Mary’s Church, Walney Island’ and ‘Barrow Mission Community’