



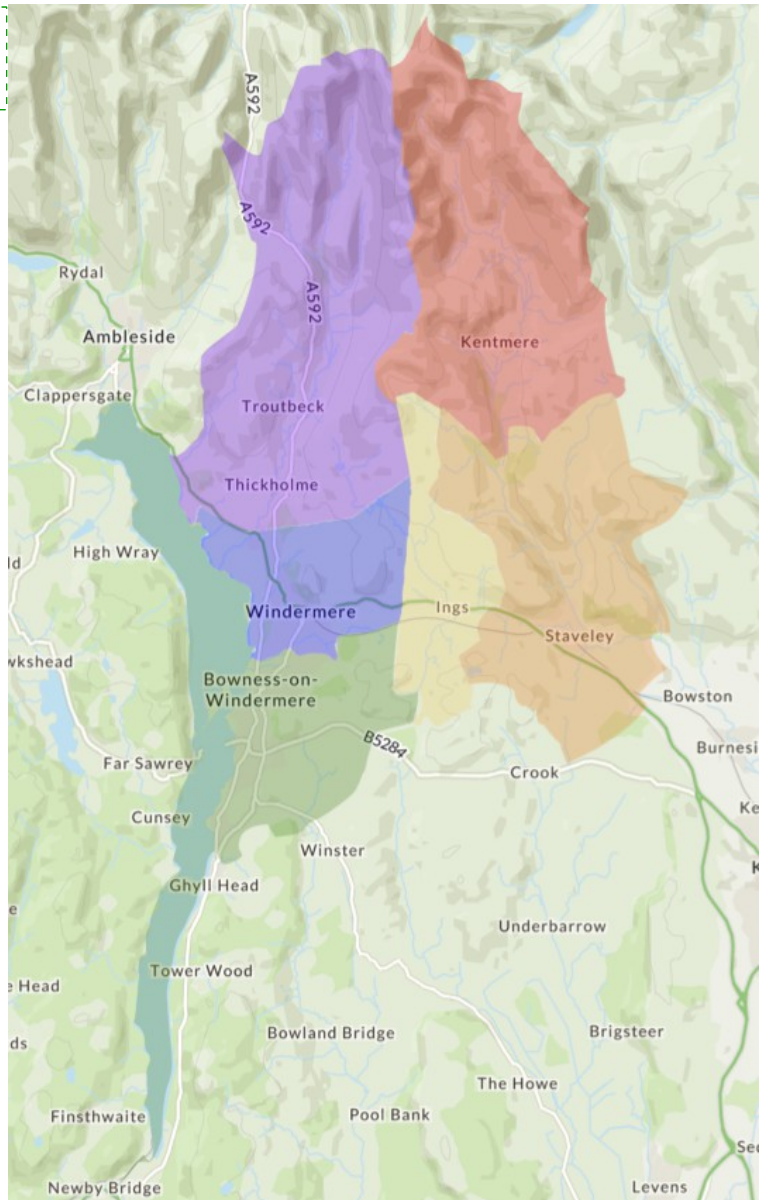
*Who we are and what we are hoping for:*

*A Profile*

## CONTENTS

*Clickable links to each section. Return link at foot of each page.*

1. [Summary](#)
2. [The vicar we're hoping for](#)
3. [The parishes](#)
  - 3.1. [Staveley](#)
  - 3.2. [Windermere and Bowness](#)
  - 3.3. [Troutbeck](#)
  - 3.4. [Bowness](#) (covered with Windermere at 3.2)
  - 3.5. [Ings](#)
  - 3.6. [Kentmere](#)
4. [Our Churches, local communities, mission \(schools etc.\) and people.](#)
  - 4.1. [St. James', Staveley](#)
  - 4.2. [St. Mary's, Windermere](#)
  - 4.3. [Jesus Church, Troutbeck](#)
  - 4.4. [St. Martin's, Bowness](#)
  - 4.5. [St. Anne's, Ings](#)
  - 4.6. [St. Cuthbert's Kentmere](#)
5. [The wider context: Diocese, Deanery and Mission Community.](#)
6. [Accounts and the church buildings](#)
  - 6.1. [St. James', Staveley](#)
  - 6.2. [St. Mary's, Windermere](#)
  - 6.3. [Jesus Church, Troutbeck](#)
  - 6.4. [St. Martin's, Bowness](#)
  - 6.5. [St. Anne's, Ings](#)
  - 6.6. [St. Cuthbert's Kentmere](#)
7. [The Vicarage.](#)



## 1 – SUMMARY

The newly formed South Lakes Team Ministry came into being on 1st November, 2021 bringing together six distinct parishes with different backgrounds, settings and traditions. Together with Carver Uniting Church (Windermere) and Windermere Methodist Church, the parishes are part of the still-being-formed South Lakes Mission Community. The process of bringing the six parishes in three former benefices together into a single team began in January 2020,. While the legalities have been gone through, the real growing together has been significantly restricted by the pandemic.

The Team Rector designate (the Revd James Richards) and Team Vicar designate (Canon Shanthi Thompson) were working well together on this process until the Team Vicar was invited to apply for and was successful in being appointed as Vicar of Holy Trinity in Kendal ("Kendal Parish Church"), taking up the post in October 2021. The Team Rector (and Mission Community Leader) has been Rector in St. Martin's parish in the new benefice since 1999, but is new to team ministry and to Mission Community. Pastoral responsibility was shared, with the Team Rector taking principal responsibility for St. Martin, Bowness; St. Anne, Ings and St. Cuthbert, Kentmere, and the Team Vicar taking pastoral responsibility for St. James, Staveley; St. Mary, Windermere and Jesus Church Troutbeck.

The team lies within the south eastern corner of the Lake District National Park – a World Heritage site – in Cumbria. It encompasses traditional villages of varying sizes, deeply rural communities and tourist 'honeypots'. Based on the 2011 census with revised information to January 2022, the official figure for the total population of the Team is about 10,500 in about 4,700 households.

The major employments of the area are tourism/hospitality related or agricultural.

## 2 – THE VICAR WE’RE HOPING FOR

The minister we are praying is called to serve with us we hope will be someone who will empathise with our beautiful area, and who will connect with our varied local communities; who can lead and inspire us; a person of strong, quiet faith, prayerful themselves and encouraging all to pray and learn what God wants of us. In this newly established team, which is becoming part of a Mission Community, you will be working collaboratively with the Team Rector, ecumenical partners and committed lay leaders within our churches. We seek to build a strong, outward focussed team and Mission Community. You will have pastoral responsibility for St. James’, Staveley, St. Mary’s, Windermere and Jesus Church, Troutbeck.

We are looking for someone who...

- is committed to building relationships: with schools; within and among our churches; and who will join in with community life
- has broad sympathy with and respects the diversity of our different churches, their communities, cultures and backgrounds
- will work with us to reach out to younger people and families
- enjoys people and is committed to pastoral care, compassionate, caring and a good listener
- is an able leader of worship, sympathetic to more traditional expectations of older members, but also challenging us to be more open and inclusive
- is a good, mindful preacher with excellent communication skills
- has good organisational skills
- is tolerant, with good humour and a sense of fun

## 3 – ABOUT THE PARISHES

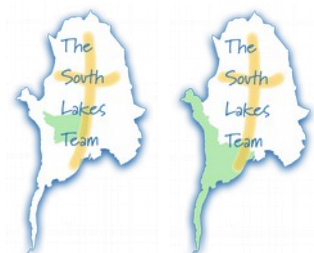
### 3.1 - STAVELEY

Staveley is a living, working community and the variety of facilities and services within the village are second to none. There are excellent transport links with regular bus services to the north and south of the county. There is also a regular train service which is linked to the west coast main line. The M6 is only 12 miles away. Staveley is a very popular village and properties for sale are often snapped up very quickly and it is a hub for walking and cycling events throughout the year. The village boasts a general store, post office, pharmacy, butcher, a local brewery, an excellent public house, cafes, a bakery, along with a number of businesses catering for outdoor leisure activities, including one of the largest bicycle shops in the country, as well as many other businesses. The very popular playground is currently being updated, and plans are in place for a BMX pumptrack to be constructed. There is a Saturday coffee morning held in the village hall which raises money each week for different organisations (including St. James’ Church) and is a much valued social event for the many people who regularly attend.



### 3.2 - WINDERMERE & BOWNESS-ON-WINDERMERE

Windermere & Bowness-on-Windermere can be found roughly at the midpoint on the east side of the longest lake in England "Windermere" (10.5 miles/17km). The town of Windermere is situated about 1 mile/1.5km above and away from the lake with Bowness-on-Windermere being the main tourist access to the lake.



Windermere (rather than Bowness at the water’s edge) takes its name from the lake. The reason behind this was simply to provide the railway station with a more appealing name. Until the



opening of the line in 1847 Windermere was known as Birthwaite. Windermere is as far into the heart of the Lake District as the railway was ever driven.

The town of Windermere was only a scattering of homes until 1847 when a railway came to the area and terminated here. The rail station was named Windermere, and the village obligingly changed its name from Birthwaite (meaning 'clearing in the birches') to match that of the station. The railroad brought hordes of holidaying Victorians to the lake. Hotels and guesthouses, built of the local stone and slate, followed. The Windermere Hotel, built in 1847 specifically for rail travellers, was ideally situated opposite the station. The town became such a popular destination that it was listed in an 1860 guidebook. Today, many of the former wealthy Victorians' homes are hotels and lodging houses.

With the railway, Windermere developed quickly around the station, with hotels, boarding houses and shops eventually spreading down the hill to merge with Bowness. Some of the finest hotels and accommodation can be found in and round Windermere along with an array of eateries from bistros, cafes, pizza parlours, Indian restaurants, Chinese, and fish & chips takeaways. Also, there are plenty of shops, ranging from crafts, gifts, clothing, outdoor shops, and supermarkets (Booths & Co-op). There are a number of drinking establishments from the quiet to the more lively ones. As well as the two Anglican parishes, Windermere and Bowness are served by Carver Uniting Church (| Methodist/URC), Windermere Methodist Church, Our Lady and St. Herbert Roman Catholic Church and the Lakes Christian Centre.

The population of St. Mary's Parish, Windermere is approximately 4,500. The area is reasonably well served by public transport (bus, train & ferry). The community as a whole could best be described as a large village or small town, but the social dynamics feel quite suburban. For much of the year there are a large number of tourists/visitors present which means for the most part this is not a typical village or town.

Bowness, on the shores of Windermere, England's largest lake (the parish includes the whole lake bed!), has a population of around 3,600. The church is located in the centre of a Conservation Area.

The community has good schools where the church has had active involvement:

The Lakes School, (Secondary), St. Martins & St. Mary's Church of England Primary School, Goodly Dale Community Primary School, Windermere School (Senior School and Junior School).

There is the best Further Education college in the country in Kendal, and a Cumbria University campus in Ambleside. We are a full employment area with a significant hospitality sector. The main issue locally is; affordable homes for local people.

Tourism is perhaps the major employment sector and there are many hotels and guest houses in evidence. Other significant employers include Booths Supermarket and Lakeland Limited which has its headquarters in the parish. The town includes a significant number of second homes and holiday lets.

The diverse nature of the community, which is typified by extremes of wealth and poverty, mean that behind the beautiful tourist centre, or the place to retire to, not everything is well. St. Mary's through a range of community links – along with our ecumenical partners – seek to make a positive contribution to community life and to offer leadership, with a Christian ethos, to the community.

### 3.3 - TROUTBECK

The parish of Troutbeck extends from the shore of Windermere to the Kirkstone Pass on the way to Ullswater. The village of Troutbeck is spread along the side of valley and consists of about 100 dwellings of which about half are holiday homes. There is a similar number of other dwellings in the parish as a whole with the same mix of permanent and holiday residents. Many of the second home owners have owned them for decades and take an active part in village life but one of the challenges facing the parish is to attract more of the visitors to the area to get involved in Church activities.



The village is a designated conservation area and retains many of the 17th and 18th century buildings. Jesus Church is situated below the village and close to the Village Institute which houses the village shop and tearoom. The parish contains the Lake District visitor centre at Brockhole, 5 hotels, 3 pubs, 1 holiday park, 1 YHA hostel and a number of Bed and Breakfast establishments as well as the Lakeland Horticultural Association gardens at Holehird. There are no schools in the parish – the nearest schools are in the adjacent parish of Windermere.



*Part of the village with Jesus Church in the foreground*

In common with other parts of the Lake District, much of the land is owned by the National Trust with highlights being the historic house of Townend – a popular visitor attraction – and Troutbeck Park Farm formerly owned by Beatrix Potter. There are 6 tenant farms in the valley – most owned by the National Trust. Despite being located beside some of the major walking routes such as High Street, Troutbeck retains a quiet unspoiled air yet is only a short distance from the facilities of Windermere.

In addition to events organised by the church, there are a wide range of village activities and these offer a convenient means for the vicar to meet more of the residents than might attend church. Indeed one of the tasks that we hope the vicar will assist with is to help ensure that village life and activities can restart after the two year gap caused by Covid. Some new residents of the village have arrived during the pandemic and are yet to be introduced to other residents and village activities.

The Village Institute is available for social events and hosts activities such as domino drives, badminton evenings and occasional plays. The Village Association concerns itself with village affairs and works with local statutory bodies and organisations such as the LDNPA, CCC, SLDC, PC and the National Trust to reflect and represent the views and concerns of residents to these organisations. Frequent contact with these organisations also means that the Association is often aware of forthcoming plans of these organisations which affect Troutbeck. The PCC is represented on village bodies – usually by the vicar or curate (when we have one) as this is seen as another good route to engage with the village as a whole.

Social events organised by the Association include the annual Duck Race in August and the Pancake Race. Troutbeck is one of the last Lakeland villages to retain the annual Mayor-making ceremony and associated trail hunt by the Coniston foxhounds.

### 3.4 - BOWNESS (COVERED WITH WINDERMERE ABOVE)

### 3.5 - INGS

Ings has a small, widely distributed rural population with more than a third being over the age of 60. This rises to over two-thirds when one considers only church membership. Ings (ecclesiastical) parish is a part of Hugill (civil) Parish which has about 400 residents, many of whom live closer to Staveley than Ings. The statistics for Hugill Parish show the age range to be:

0-4 4.3%; 5-15 10.3%; 16-24 7.7%; 25-44 20.7%; 45-60 32.5%; 60-74 4.7%; 75+ 9.8%

(The statistics for Ings (ecclesiastical) parish (2011 census corrected to Jan 2022) show 160 people in 80 households: 0-4 2.17%, 5-15 10.97%, 16-24 7.03%, 25-44 16.05%, 45-60 26.34%, 60-74 25.17%, 75+ 12.29%.)



Village life centres on three main venues: the Watermill Inn; the Parish Hall and the Grade 2\* listed Church, each of which plays a significant role in the community. There are no public, private or church schools in the St Anne's Church parish. Children in the village attend schools in Staveley, Windermere and Kendal.

The parish priest for Ings holds office as ex-officio trustee of the Bateman Trust which manages Meadowcroft Cottages - seven almshouses, the tenants of which are drawn from applicants across the area of South Lakeland.

While there are good public transport links from Ings, there can be age-related difficulties or reluctance to attend events further afield, particularly in evenings. Consequently, there is a need to provide social and cultural opportunities in the village. St Anne's Church plays a vital role in providing some of these needs. Its modernisation and upgrading enable it to continue to meet the changing and evolving needs of the future.

The Parish Hall is particularly active in supporting village life, efficiently run by a Hall Management Committee on behalf of the PCC. Many of the Committee are members of the PCC which reinforces the community focus of the Church.

There is a monthly lunch club in the hall, as well as occasions at Harvest, the AGM and so on. The Bateman Club has guest speakers at fortnightly meetings in winter. There are fundraising, community get-togethers - for quiz suppers, soup lunches, coffee mornings or afternoon teas. It is also used for after church socialising, playgroups, children's parties, band rehearsals, seated exercise classes, and the annual Summer Fayre.



The bi-monthly Ings Village Newsletter published by the Parish Hall publicises Village Events and Community News. It is delivered to all homes in the Parish, on paper or electronically, and more information can be found on the active Ings Village website: [www.ingsvillage.org.uk](http://www.ingsvillage.org.uk)

### 3.6 - KENTMERE



Kentmere is a very rural parish set in a beautiful valley 3 miles to the north east of Staveley. The parish stretches across a huge area and encompasses the whole of the Kentmere Horseshoe range of hills. Modern Kentmere is a vibrant, living community. As might be expected in a small rural area, its make up does not change on a regular basis. After some 15 years with barely any change, we now find that about one third of the residents have moved here within the last 12 years. It is still a farming area, although this now involves only 25% of the population. The remainder consists of a good balance of those who work from



home, those who travel to work outside the valley on a daily basis, and retired people. Despite its area it has a small population of around 70 adults and at present very few children of primary school age. We are encouraged, however, that there have always been sufficient school-age pupils living in the parish to warrant the provision of a school taxi. The nearest primary school is in Staveley and there are secondary schools in Kendal and Windermere. Community spirit is our strongest asset – and you can see some evidence of that at our monthly lunch club for over 50s held at Maggs Howe.





The area is a focus for many outdoor competitions such as the nationally famous Kentmere Horseshoe Race around the head of the valley and the Lakeland 100 - a hundred mile trek which passes through the village and there are numerous other similar events.

Despite its apparent remoteness it is a very busy place often almost inundated by visitors. 30 years ago they came in the summer, then at weekends in the winter, now it is all the time whatever the weather. Parking is a problem along with the narrow road into the valley. Indiscriminate parking on the grass verges damages often rare plants which the visitors claim to value. Kentmere is a very beautiful and special place but we share many of the problems faced by other remote Lakeland communities. We have a long narrow road which is our lifeline. We have satisfactory broadband reception but we have no mobile phone signal from any provider.

## 4: OUR CHURCHES, LOCAL COMMUNITIES, MISSION (SCHOOLS ETC.) AND PEOPLE

### 4.1 - ST. JAMES', STAVELEY

We seek to be a welcoming church, both for the local community and visitors alike and the building is open daily.

#### *Worship and prayer*

A service of Holy Communion is currently held on the first and third Sundays each month while the services on the other Sundays are taken by a team of Lay Leaders, all at 9.30 a.m. A service of Holy Communion once each month takes place in the village hall, and is more suited time-wise and accessibility wise to parishioners with mobility problems, but of course is open to everyone who wishes to attend. There is an active bible study group which meets regularly, either in our sister church, St. Mary's, Windermere, or on Zoom. A monthly "Cygnets" service takes place which is for pre school children and is well supported by the Blossom Trees Nursery. The new incumbent will benefit from an established support network of volunteers and an active PCC of eleven members. Staveley with Kentmere Mothers' Union is a very active branch with 32 members who support the work of the church in many ways.

We have very close and important links with Staveley School and, prior to the pandemic, services took place in church for all the major festivals. Also regular "Good Work" assemblies were held in church, where the children showcased to their parents what they had been working on and certificates were awarded. We feel it is very important that a new incumbent works with the school and continues to nurture the contacts even further.

#### *Outreach*

As with the rest of the country (and the world) Covid 19 has interrupted activities and our mission and outreach is no exception. Before the pandemic there were Messy Church services, school assemblies, home communions, Winter Warmer and Lent Lunches, Mothers' Union, coffee and Chat and Holiday Club for primary schoolchildren in the summer holidays. Some of these activities are now taking place again and we would look to our new minister to take these forward, restrictions permitting.



### 4.2 - ST MARY'S, WINDERMERE

St. Mary's is a friendly, welcoming church on the north side of Windermere town. We have an electoral roll of just over 50 with regular Sunday congregations of around 30. Visitors and tourists are welcome to come along to any of our services and events; or to take the opportunity for quiet reflection. On holiday Sundays such as at Easter or Christmas our numbers can swell to over 100.

St. Mary's would perhaps be described as 'central' however, the strength of the congregation is their ability to hold together and minister among those who come from a variety of faith experience.

## Services

Sunday Celebration 11.00 am

Morning Prayer – 1st & 3rd Sundays

Holy Communion (CW) – 2nd & 4th Sundays

Wednesday 10.00am (every other) Holy Communion (CW)

## Schools

The Parishes have extremely good relationships with our local schools (see parish information [3.2 above](#)) and they are frequent visitors to our churches. Prior to the COVID 19 pandemic our work among young people was focussed on the holding of workshops – for example on Good Friday and the beginning of Advent, which attract a large number of children and their parents.



### 4.3 - JESUS CHURCH, TROUTBECK

Jesus Church is seen as being central to village life in Troutbeck and attracts its congregation from both parish residents and non-residents. Of the 38 people on the electoral roll, 11 are residents of the parish.

Weekly services are held on Sunday at 9.30 a.m. and are in a traditional style of worship. Mattins is held on the 1st, 3rd and 5th Sunday (BCP) and Holy Communion on the 2nd and 4th Sunday (BCP and CW). The congregation is attracted by a “traditional” style of worship. There seems to be no particular preference for BCP or Common Worship Eucharists however, there is a desire to maintain BCP Matins (two each month) rather than a modern liturgy.

Attendance is usually between 25 and 35. The regular congregation is predominantly from an older demographic. Major occasions such as Christmas, Easter and Remembrance Sunday will attract congregations between 75 and 100 (pre-pandemic figures). Comments from the congregation indicate that they are drawn by a combination of the style of service and the friendly greeting shown to all who attend. The high proportion of the congregation who travel from another parish testify to the attraction of the services at Jesus Church. Coffee and refreshments are offered after the service once a month to enable those present to meet and talk.

The church is supported by a Lay Reader (who conducts some of the Mattins services), two Churchwardens, and the PCC.

For the 2019 and 2020 years there were 2 baptisms, 3-4 weddings, and 3-4 funerals held at Jesus Church.

The PCC arrange a regular series of community events such as the Harvest and Christmas suppers and the annual Carol Service which includes refreshments for all who attend. Our Parish Magazine is circulated throughout Troutbeck (not just to church-goers) and also to a surprisingly large out-of-Cumbria readership – the circulation is now over 250 - and the magazine is seen by the village as Troutbeck’s main source of community news and information.

### 4.4 - ST. MARTIN’S, BOWNESS



St Martin’s is in the heart of Bowness on Windermere and therefore attracts about 20,000 visitors each year as it is Grade 1 Listed. This brings its own challenges of roof repair, which is urgent, and upkeep of the fabric, which is necessary. Fundraising for this is always a priority and is currently an unmet need.

Our church attracts over 60 people every Sunday. We will be full for major events. We are a mainly senior congregation with a



Sunday Club for young people, a Youth Club for the older ones. We run Home Groups, a Contemplation/ Meditation group in person and online, and a Lunch Bunch for single women who live alone. Our PCC is active with about 10 members. We have two retired clergy who help occasionally, and a volunteers who run Sunday Club on Sunday mornings and a small yout group on some Sunday evenings.. We have welcomers who keep the church open throughout the Spring, Summer and Autumn, to greet our 20,000 visitors.

We run Sunday services in person and live-streamed, Holy Communion, interspersed with lay led services. We alternate organ music in services with guitar, violin and flute or clarinet. Our choir has not restarted after the pandemic. Our Team Rector is ably assisted by an administrator, churchwarden and two treasurers. The Rectory is in Bowness.

We work with Windermere food bank, Manna House, Children's Society, Fairtrade, choral groups and many more.

As the largest church in The South Lakes Churches group, and close to hotels, we are popular for weddings. Baptisms are a part of our normal Sunday worship, welcoming new children to our church.

The parishioners' quotations of the best things about St Martin's church:

- a) "as a relative newcomer was how warm and welcoming it was"
- b) "We cannot think of a church that we would sooner be at, than St Martin's."
- c) "Spiritual teaching, fellowship, support and connection, available in my local community."
- d) "It's a visible sign of God's love in the heart of Bowness"
- e) "A place of peace, love and a very close-knit family"

The 3 biggest challenges for St Martin's church

- a) Encouraging a younger group of Christians
- b) Extending our digital presence, making Hybrid Church a reality.
- c) Engaging with our community to create our Christian centre.



#### 4.5 - ST. ANNE'S, INGS

Our priority is to provide a nurturing, caring environment for all, both for Church members and for the whole Village community and to welcome and include visitors of all faiths and none. Clearly, there is need to provide spiritual support for Christians and those searching for a faith, as well the ceremonies that link people together at birth, marriage and death. We consider the church to be at the service of the community, so this includes the building as provision of space space for both worship and non-worship activities, all of which which bring people into the building. We host concerts, coffee mornings, rehearsals, meetings, e.g. chamber music and piano workshops, exhibitions and craft fairs – all of which bring welcome income, to pay for the upkeep of church fabric, thus supporting the worshipping community. Our experience over the years is that such activities draw people into the worshipping community, helping to maintain church attendance.

Acts of fundraising strengthen the community as we work together for a common good, indeed we have received considerable funding from non-church-goers in the village. We apply for grants where available and appropriate. We are fortunate to have kind, generous, enterprising and initiative-



taking church members with a broad skill base. While there is no natural mechanism of succession of church membership, newcomers to Ings in recent years have provided continuity but we recognise there is more to do to encourage more people to participate in the life of church. Our ethos to support and serve the community is paramount.

Since relaxation of the Covid protocols, use of the church has burgeoned, particularly for musical activities. Having created the versatile space, we continue to develop its usage, and work alongside the Parish Hall coordinating provision between the two venues. The church is open every day throughout the year during the hours of daylight.

We are liturgically focussed but comfortable with some informality. We recognised and embraced the need for lay-led services and particularly enjoy the thoughtful provision by three teams of two who lead services in rotation. Our regular services are at 11am followed by an important social coffee time in the hall. We have a minister-led Eucharist twice a month, the other Sundays being lay-led Morning Prayer. The congregation welcomes people from other denominations, and we participate by rota in the readings and intercessions. Likewise we provide servers, sides-persons, music (5 organists and Ings Occasionals choir), and refreshments.

We have an active and positive PCC which accomplishes much with good humour and friendship. We meet every other month or as required.

#### 4.6 - ST. CUTHBERT'S, KENTMERE

##### *Mission / community links / nurture and evangelism*

There is a very active and conscientious PCC which fulfils the mission statement of the church in a quiet but very effective manner usually by personal contact. It meets regularly. It is the sort of community where everyone knows what is going on and people with something to celebrate or problems to overcome are contacted and supported. There are no other churches within the parish and we are happy to welcome people of all denominations, or none, to our church and services. Kentmere members of the Mothers' Union join with Staveley.

##### *Worship / Services*



There are currently two regular services in Kentmere Church each month. The pattern at present is Holy Communion (Order 2) at 9.30 a.m. on the second Wednesday and Evensong (BCP) at 6.00 p.m. (4.00 p.m. in winter) on the fourth Sunday. The members of the PCC are very keen to continue with this. There are also festival services at Christmas, Mothering Sunday, Easter, a Harvest Festival and some years a Thanksgiving for Lambing which is held in one of the farm yards or sheep sheds. We also aim to have at least one concert or choral service in the church each year to take advantage of its magnificent setting and splendid natural acoustics. Prior to the pandemic we hosted regular Summer Music Schools for young musicians.



##### *Vision / opportunities / challenges*

The PCC has no plans to make any significant changes. In many ways it takes all our efforts to maintain the status quo, but we try very hard to make small improvements to what we have. We would like to make much more use of the building for events such as recitals and concerts although the venue for meetings is well catered for by the village hall (Kentmere Institute) just across the road. The church is always open and is regularly used as a refuge for people returning from the fells. Our aim is to maintain a warm, comfortable and welcoming environment. Prior to the pandemic we hosted regular summer music schools for young musicians and we are keen to use the church for more events.

### Strengths

A very active and conscientious PCC and friends fulfilling the mission of the church in a quiet but very effective manner usually by personal contact. There is a very strong community spirit across the parish. The church is well heated and we have a superb sound system installed with audio loop for people with hearing aids and we have aids for people with partial sight and appropriate toys and books for young visitors.

### Weaknesses

A small number of people involved – the population of the parish is only 70 and normal congregations rarely exceed 12 – although the church can be filled for a special service. At present there are no facilities for younger people within the community although links with nearby Staveley are well established. The church building has no water supply – thus no toilets and no kitchen – so strong links and co-operation with Kentmere Institute are necessary and well used. Unfortunately, despite valiant attempts, the approach to the church cannot be adapted for wheelchair access.

**Further information** about the church and its history can be found on the Kentmere website (<https://www.kentmere.org>).

## 5: THE WIDER CONTEXT: DIOCESE, DEANERY AND MISSION COMMUNITY.

The boundaries of the Diocese of Carlisle are more or less coterminous with the County of Cumbria. A vision for Growing *Disciples* launched across the diocese gained an ecumenical dimension and in 2015 became *God for All*. Carlisle Diocese is in covenanted partnership with the Methodist Church, the United Reformed Church, and the Salvation Army across the county. The vision is for ecumenical Mission Communities, groupings of Anglican parishes with other covenanted churches, and with other churches locally as circumstances permit, working together for the mission and ministry of the Church in their localities. In 2020 a Vision Refresh process led to four strands in the refreshed *God for All* vision: *Follow Daily, Speak Boldly, Care Deeply, Tread Gently*. This is beginning to be fleshed out in parishes across the diocese. (<https://godforall.org.uk>)

Windermere Deanery is part of the Westmorland and Furness Archdeaconry with a friendly and supportive Deanery Chapter.

Like other dioceses, Carlisle has felt the strain of the pandemic, but careful management and significant restructuring of central activities have avoided us running into deficit. The diocese runs a Parish Offer scheme where parishes are informed of the cost of ministry and invited to make a generous offer towards the cost of the ministry they receive, and where possible to support ministry elsewhere. Increasingly this is operating on a Mission Community basis rather than parish by parish.

Planning to bring six parishes from three benefices into a single South Lakes Team began in Autumn 2019, but only began to be put in place at the beginning of 2020, just before lockdown. From the beginning the intention was to avoid clergy rushing from place to place on a Sunday, and in general this has been put in place. The corollary is that there are a significant number of lay-led service across the team.

The parishes are being asked to make a Parish Offer on the basis of two stipendiary clergy serving the team, plus a share of the cost of the Deanery Network Youth Minister. Within the team the parishes have reached agreement about a fair division of the cost of ministry amongst them.

The Mission Community is only in an embryonic stage at present, but there are good friendly relationships amongst the local clergy and between the churches.



## 6: ACCOUNTS, AND CHURCH BUILDINGS, AND THE VICARAGE.

### 6.1 - ST. JAMES', STAVELEY

#### FINANCES

St James Church as in 2020 has had to face a challenging time financially due to Covid-19 restrictions in 2021. Again, the church had to be temporarily closed for services from after Christmas 2020 until Easter. Regular weekly worship did not return until after 27th June 2021. This meant that as well as a reduction in collections, that normal fundraising coffee mornings, lunches and similar events could not take place until much later in the year. This has made cash flow tight but we have survived. The overall result on the general unrestricted funds is a deficit of £17,583 which is a worse result than 2020's deficit of £-10,821. This difference is mainly driven from a significant drop in planned giving and general donations and also due to a gift aid claim for 2020/21 still needing to be achieved. General expenses actually decreased year on year with total payments of £45,142 of unrestricted funds compared to £47,365 in 2020 with savings being made in heat, light and insurance, vicar expenses and salaries.

The total of General Fund Planned Giving for the year amounted to £16,542 compared to £19,994 in 2020. This decrease of £3,452 sadly is the result of donators leaving the scheme due to death or other reasons. Increasing planned giving through a stewardship campaign is one area that will have to be thought about in 2022/23.

The largest financial outgoing and commitment the PCC has remains the Parish Offer. The agreed offer for the year was £25,812. This year saw a reapportioning of the parish offer across the 6 churches of the benefice. St James Parish Offer decreased to £25,812 from the £35,815 in 2020 which we could not fulfil in that year. In 2020 our monthly standing order had to be reduced as we could not meet the financial commitment. This year we have been able to pay it in full.

Total expenditure for the year was £47,354 which was £8,170 less than 2020. The main contributing factor was the reduction in Parish Offer compared to 2020. Savings also have been made as no major maintenance costs have been incurred.

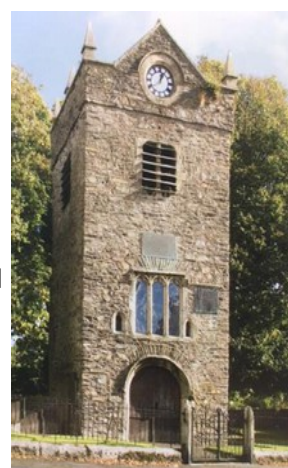
#### BUILDING



The church is a Grade 2 listed building with the renowned east window designed by William Morris and Edward Burne-Jones. The building was opened in 1865 and it replaced a much older church which was located on the main street. A tower still remains from the St. Margaret's Chapel and the graveyard is currently used for burials.

We have plans for re-ordering St. James' to make it more suited to modern life and are hoping to begin with Phase 1 in the

not too distant future. This is work on the front entrance to make it more attractive and to make it accessible for all.



### 6.2 - ST. MARY'S, WINDERMERE

#### FINANCES

In the past few years, the Applethwaite Parish Centre Trust has ensured that any deficit in the normal income and expenditure of the church finances is covered. Part of the ongoing strategic plan is to ensure that day-to-day

running of the church building and the ministry offered by clergy and laity is funded quite separately from the Trust.

### [Where Does The Money Come From?](#)

At present the vast majority of the income of St. Mary's is from the planned giving and the collections from services.

Stewardship and collection		£25556
Tax refund		£6342
PCC Fees & Collections	£3548	
Donations (100 club)		£2088
Investment income		£16
Trading and magazines		£18
Applethwaite Centre & Office	£311	
Activities	£0	
Grants & legacies		£24984
<b>TOTAL</b>		<b>£62863</b>

### [Where Does The Money Go?](#)

The Parish Offer is the largest outgoing for St. Mary's though the maintenance and running of the building is also significant.

Parish offering paid to Diocese		£25000
Services	£2898	
PCC fees	£4429	
Insurance & licences	£4449	
Building fabric	£18642	
Utilities		£4284
Management	£1187	
Charities	£320	
<b>TOTAL</b>		<b>£61209</b>

### [Ongoing Stewardship](#)

The St. Mary's Finance & Management Team conducted a stewardship campaign in 2009, the last such campaign being held five years previously. The outcome of the 2009 stewardship campaign did not eradicate the financial deficit of St. Mary's, but a number of good lessons were learned. It was apparent that the current congregation could no longer finance the ongoing running of the church building and the cost of the ministry provided by the Diocese. The only option was to grow the congregation – a part of the strategic plan and the mission statement of the church.

The stewardship approach to giving within St. Mary's is now envisaged as an ongoing exercise, and not periodical campaigns. The church members will be encouraged on a yearly basis to review their giving. This approach mirrors the Diocesan desire to back the 'Giving for Life' scheme.

### [The Applethwaite Parish Centre Trust](#)

Some 35 years ago St Mary's received a bequest from the late Major J. F. Hopkinson. It has always been understood, but not confirmed, that this gift was for the benefit of the facilities and structure of the church buildings.

When the Parish Centre was sold for more than had been originally expected the PCC decided to take the opportunity to reorganise its finances. It decided to split the capital that was left over after the re-ordering of the Church. The PCC would retain a fund for the day to day running of the parish and the balance would be put into a

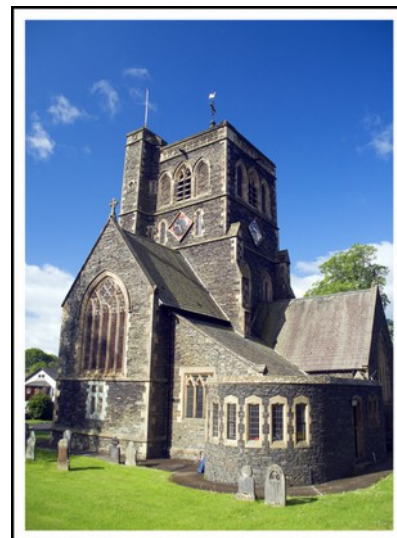
Charitable Trust, from which the annual income could be used to support specific needs of the church outside the day to day running costs.

### Details of the Trust

The Trust is registered with the Charity Commission under number 1111513 and details of the Trustees, Purposes and Annual accounts are available on the Commission's Website or by written request from the Charity Commission. The Trustees are The Vicar, Church Wardens and Treasurer of the PCC ex officio plus two independent parishioners, who are not members of the PCC.

### The Objectives of the Charity as written in the Trust Deed are:

- For the conservation, restoration, maintenance, improvement and reconstruction of the church, churchyard, grounds and associated buildings of St Mary's Church, Windermere, Cumbria including the fabric, fixtures, and fittings and for such other charitable purposes in connection with the work of the Church as the Trustees shall from time to time determine.
- For such general charitable purposes for the benefit of the inhabitants of the Parish of St Mary Windermere as the Trustees shall from time to time determine.



### BUILDING

A chapel was first on the site in 1848 and was steadily extended until finally St. Mary's was consecrated as a parish church in 1856. The architecture is Victorian in style using local stone and slate. Following a catastrophic fire in 1988 the church was restored with a lighter-wood, contemporary-styled roof. In 2006 St. Mary's celebrated the 150th anniversary of becoming a parish church and completed a major project which involved a total reordering of the church interior. This left a good mix of traditional Victorian structure with modern amenities and provided facilities for wider community use as well as a beautifully appointed and flexible worship space. St. Mary's now has facilities to host a wide range of clubs, society and community events.



St. Mary's Church has a number of smaller venues for hire including the Upper Room, Addison Room and Harrison Room. St. Mary's also provides a newly furnished fully equipped kitchen, audio-visual equipment and modern toilets with baby-changing facilities. St. Mary's is available for hosting concerts and larger events in the main section, providing seating for approximately 200+ people. The building provides easy access for the disabled, and guide-dogs are welcome.

## 6.3 - JESUS CHURCH, TROUTBECK

### FINANCES

These details are taken from the annual report for 2021

#### Treasurer's Report

Although there were no services during the first two months of 2021 because of the Covid restriction, our finances were very healthy, and the receipts and payments were in balance. This was because our regular congregation generously maintained their support and donations. The "Planned Giving" (brown envelopes and bank standing orders) was maintained (£12,298). Collections at weddings, funerals and the church box showed a marked increase (£2,453) as restrictions eased and visitors returned. One result of the pandemic is that we no longer carry cash, so we have installed a credit card reader in the church via which many visitors make a kind donation. I



would expect the cash in the wall safe to decrease correspondingly. Our Payments have only increased slightly. Overall, on all funds, receipts were £34,774, up by £778 on the previous year. Payments were £38,184, up £1,705 on the comparable figure for 2019. So there was an overall deficit of £2,410. The comparable figure for 2020 was a deficit of £2,483.

Our Parish Offer to the Diocesan Board of Finance was £15,846, being Jesus Church's accepted share (12.41 %) of the cost of the two priests shared between our six churches in the Combined Benefice.

The value of our investments increased by £35,991 (10.5%) but it should be borne in mind that annual inflation for 2021 was 5.1 %

Again there were no social events and this was reflected in both Receipts and Payments.

There were no Harvest Supper or Carol services to fund our usual donations. However, we were able to give donations to the Bishop's Harvest for the Hungry, RBL (we did hold a Remembrance Sunday service), and the Children's Society. It was felt that we could also afford to make eight £1,000 donations to various local and international charities.

The figures below come from the 2021 accounts when it should be noted that no village events took place with a corresponding reduction in income and expenditure.

### Summary of funds

	<u>Unrestricted</u>	<u>Restricted</u>	<u>Total</u>
Receipts	31,825	2,949	34,774
Payment	34,445	3,739	38,184
Surplus/Deficit for Year	-2,620	-790	-3,410
Legacies	<u>1,000</u>	<u>0</u>	<u>1,000</u>
	-1,620	-790	-2,410
Accumulated Funds 1 January			<u>368,556</u>
			366,146
Increase/ Decrease in Market Value of Investments during the year			<u>35,991</u>
Accumulated Funds 31 December 2021			402,137

### Income

#### **General (Unrestricted) Fund**

Regular Giving			
Planned Giving - Standing Orders		6,825	
Planned Giving - GA Envelopes		5,073	
Planned Giving - not GA		<u>400</u>	
			12,298
Gift Aid - Regular Services		130	
Collection - Regular Services		<u>750</u>	
	880		
Other Voluntary Receipts			
Collections - Baptisms, Weddings & Funerals		1,065	
General Donations		852	
Church box		219	
Sumup/ CollecTin		<u>317</u>	
			2,453
Gift Aid Income Tax Recovered			3,551
Receipts from Activities for Generating Funds			
Fundraising and Social Events		0	
Parish Magazine Subscriptions		<u>1,025</u>	
			1,025

Receipts from Church Activities		
Fees - Weddings	874	
Fees - Funerals	<u>1,322</u>	2,196
Receipts from Investments		
Dividends, Rathbone	8,928	
Interest, Rathbone	<u>340</u>	9,268
Unremitted Dividends B/fwd 1 January	-1,504	
Unremitted Dividends C/fwd 31 December	1,213	
CCLA Deposit account Interest	<u>5</u>	
HMRC Interest on GA Tax recovered	0	-286
Other Receipts		
Income from Trust Funds	<u>440</u>	<u>440</u>
<b>TOTAL RECEIPTS (Unrestricted funds)</b>		<b>31,825</b>
<b>Restricted Funds</b>		
Fees		2,705
Donations		230
Income Tax Recovered		<u>14</u>
<b>TOTAL RECEIPTS (Restricted funds)</b>		<b>2,949</b>

## Expenditure

### **General (Unrestricted) Fund**

Church Activities		
Parish Offering	15,864	
Share of St. Mary's Admin	242	
Clergy Expenses	<u>250</u>	16,356
Insurance	1,972	
Heating, Lighting and Water	1,450	
Cleaning	505	
Repairs & Renewals	1,696	
Printing, Stationery, & Postage	221	
Parish Magazine Postage etc	156	
Church Sundries	155	
Sundry Expenses	<u>632</u>	6,787
Charitable Donations		8,156
Costs of Generating Funds		
Rathbones Management Fee	3,146	
Fundraising and Function Costs	<u>0</u>	<u>3,146</u>
<b>Total Expenditure General (Unrestricted) Fund</b>		<b>34,445</b>

### **Restricted funds**

Churchyard Fund		
Grasscutting		2,151
Tree works		1,382
Mapping		<u>51</u>
<b>Total Expenditure (Restricted Funds)</b>		<b>3,584</b>

## BUILDING



In 1300 Troutbeck contained two royal deer parks – one at Troutbeck Park – and perhaps 50 residents. As the woodland was cleared the population grew to nearer 300 by the 15<sup>th</sup> century with a wooden chapel being built in 1506 on the site of the current church, replaced by a stone church in 1562 (the “*Church or Chappell of Troutbecke, called by the name of Jesus*”). Mills were located in the parish to deal with the crops grown in the valley. Slate quarries were established in the valley with working continuing until 1920. Today all these activities have ceased leaving the valley to the sheep, red squirrels and walkers.

The church itself was most recently extensively renovated in Victorian times and is oak beamed with stalls and communion rail composed of Jacobean woodwork. Visitors come to see, amongst other things, the Arts and Crafts window by William Morris, Ford Madox Brown and Sir Edward Burne-Jones.

The churchyard is noted for its profusion of daffodils in the spring.





## 6.4 - ST. MARTIN'S, BOWNESS

### FINANCES

Parish finances have been challenging during the pandemic when no tourists were visiting, but generally we actively support our diocese financially as well as our mission partners.

#### **THE PCC OF THE ECCLESIASTICAL PARISH OF ST MARTIN, WINDERMERE** **BALANCE SHEET AT 31st DECEMBER 2021**

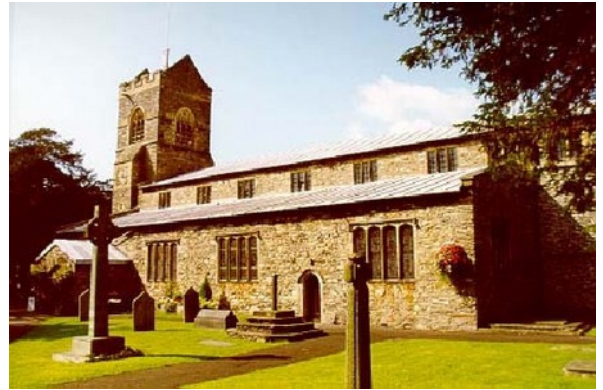
	Note	<b><u>Unrestricted Funds</u></b> <b><u>£</u></b>	<b><u>Restricted Funds</u></b> <b><u>£</u></b>	<b><u>Total Funds 2021</u></b> <b><u>£</u></b>	<b><u>Total Funds 2020</u></b> <b><u>£</u></b>
<b><u>FIXED ASSETS</u></b>					
Tangible				0	0
Investments	5	151	17540	17691	17636
		151	17540	17691	17636
<b><u>CURRENT ASSETS</u></b>	6				
Stock	6(a)	2907		2907	3999
Debtors	6(b)	5471	46	5517	3097
Short-term deposits				0	0
Cash at bank and in hand		26888	12526	39414	36015
		35266	12572	47838	43111
<b><u>CURRENT LIABILITIES</u></b>	7				
Creditors falling due within one year				0	10200
Receipts in advance	7(a)	340		340	0
Accruals	7(b)	1705	224	1929	2708
		2045	224	2269	12908
<b>Net current assets/ (liabilities)</b>		33221	12348	45569	30203
<b><u>TOTAL NET ASSETS</u></b>		<b>33372</b>	<b>29888</b>	<b>63260</b>	<b>47839</b>
<b><u>PARISH FUNDS</u></b>	8				
Unrestricted	8(a)	33372		33372	16846
Restricted	8(b)		29888	29888	30993
<b><u>TOTAL FUNDS</u></b>		<b>33372</b>	<b>29888</b>	<b>63260</b>	<b>47839</b>

**THE PCC OF THE ECCLESIASTICAL PARISH OF ST MARTIN, WINDERMERE**  
**STATEMENT OF FINANCIAL ACTIVITIES FOR THE YEAR ENDED 31st DECEMBER 2021**

	Note	Unrestricted Funds £	Restricted Funds £	Total Funds 2021 £	Total Funds 2020 £
<b>INCOMING RESOURCES</b>					
<b>Voluntary Income:</b>	2				
Planned Giving with Gift Aid		34804		34804	34739
Planned Giving without Gift Aid		1501		1501	2706
Collections with Gift Aid		954		954	483
Collections without Gift Aid		2967	224	3191	777
Boxes		3938		3938	245
SUMUP		1175		1175	0
Donations with Gift Aid	2(a)	16872		16872	11430
Donations without Gift Aid		1401		1401	3534
Gift Aid recovered	2(b)	14925		14925	11800
Compensation (re Power Outage)		420		420	0
Jenny's Books		116		116	0
Legacies		0		0	1258
Grants	2(c)	0	2280	2280	52300
		79073	2504	81577	119272
<b>Fees:</b>					
PCC fees for weddings & funerals		4089		4089	1854
Bellringers' fees donated	2(d)	590		590	0
		4679	0	4679	1854
<b>Church Activities:</b>					
Parish News advertising		40		40	250
Gift Stall		2225		2225	204
Concerts & Events	2(e)	0		0	0
		2265	0	2265	454
<b>Investments:</b>	2(f)	4	166	170	235
<b>TOTAL INCOMING RESOURCES</b>		<b>86021</b>	<b>2670</b>	<b>88691</b>	<b>121815</b>
<b>RESOURCES EXPENDED</b>					
<b>Ministry:</b>	3				
Diocesan Parish Offering	3(a)	38661		38661	50000
Clergy, Secretarial and Office Exp.	3(b)	12443		12443	13714
Altar Supplies		15		15	77
Organist		1224		1224	707
Other costs	3(c)	1232	181	1413	1299
		53575	181	53756	65797
<b>Building:</b>					
Power & Water		5214		5214	5158
Insurance	3(d)	4056		4056	4437
Renovation Project	3(e)		740	740	39502
Repairs & Maintenance	3(f)	3473	2663	6136	2369
		12743	3403	16146	51466
<b>Church Activities:</b>					
Gift Stall Purchases		1155	0	1155	103
<b>Missions:</b>	3(g)	2040	224	2264	425
<b>TOTAL RESOURCES EXPENDED</b>		<b>69513</b>	<b>3808</b>	<b>73321</b>	<b>117791</b>
Net Incoming Resources before Other Gains and Losses.		16508	-1138	15370	4024
Gains on disposal and revaluation of assets and investments	4	18	33	51	22
Net Movement in Funds		16526	-1105	15421	4046
Transfers between Funds				0	0
Balances b/fwd on 1st January 2021		16846	30993	47839	43793
Balances c/fwd on 31st December 2021		33372	29888	63260	47839

## BUILDING

Our church dates back to 1203 and was rebuilt in 1483. The font is the only remnant of the original church. The East window is mainly medieval stained glass, possibly from Cartmel Priory, and is a treasure, said to be the finest in Northwest England. It includes the coat of arms of the family of George Washington. There are many beautiful Pre-Raphaelite inspired stained glass windows around our church. There are Henry Hughes murals and a thanksgiving poem for deliverance following the Gunpowder Plot. Our millennium renovation installed a new Curwen screen in front of the tower to create a children's room, a new floor and under-floor heating, restoration of the organ and re-hanging of the eight bells.



## 6.5 - ST. ANNE'S, INGS

### FINANCES

#### FINANCIAL STATEMENT 31.12.2021

Ings PCC No.1 Account

#### RECEIPTS

2020	Income resources from donors	2021
11384.50	Planned Giving (Gift Aided)	9545.00
	Collection (G Aided)	260.00
2014.30	Collection & Other planned Giving	2138.50
4447.11	Income Tax recovered	
<b>17845.91</b>		<b>11943.50</b>
<b>Other voluntary income resources</b>		
None		
<b>Income resources to further work of the church</b>		
	DCMS rebate	2033.49
2542.00	Fees (marriages and funeral)	214.00
550.00	Use of church (GA)	320.00
	Use of church (non-GA)	1322.10
49.80	Magazine revenue	0.00
	Charitable donations (inc legacies) (GA)	413.54
	Charitable donations (inc legacies) (Non-GA)	14027.33
<b>3141.80</b>		<b>18330.46</b>
<b>Fundraising activities</b>		
558.80	Coffee mornings	0.00
211.80	Other fundraising	0.00
11470.35	Toilet / Tower Project	0.00
	Loan Account	0.00
<b>12240.95</b>		<b>0.00</b>
<b>33228.66</b>	<b>2020 TOTAL RECEIPTS</b>	<b>30273.96</b>
<b>35059.65</b>	<b>2020 TOTAL PAYMENTS</b>	<b>20581.96</b>
<b>-1830.99</b>	<b>BALANCE</b>	<b>9692.00</b>
6336.92	Add Bank at 1st. January 2021	4505.93
<b>4505.93</b>	Bank account at 31st. Dec 2021	<b>14197.93</b>

#### PAYMENTS

2020	2021	
Church Activities		
8490.00	Parish Share	8340.00
654.00	Fees (DBF)	389
29.82	Services	
200.98	CCLI	206.66
9374.80		8935.66
Running expenses		
39.06	General church	54.42
1510.44	Insurance	1543.42
238.77	Phone/stationery/sundries	235.36
1087.25	Electricity	1590.36
	Miscellaneous/Buildings	2601.14
217.00	Vicar's expenses	313.54
37.10	Water Plus	65.63
	Magazine printing	0.00
254.00	Charities-Weddings/funerals	12.43
	Transfer to Building Account	
150.00	Organists	0.00
447.50	Salaries	0.00
1000.00	Pumptrack Toilet Project	0.00
20353.73	Toilet / Tower Project	5000
25334.85		11416.3
350.00	Donations to Charities	230.00
35059.65		20581.96
		20581.96

#### CHAIRMAN :

I have examined the accounts of St Anne's Church, Ings. The Bank and Investment Accounts have been verified. In my opinion the Accounts give a true representation of the PCC's finances at 31st. December 2021.

Paul White  
Independent Examiner

The financial position is fair with no known major fabric problems to threaten this situation, but has to be managed with care, the suggested parish offer being a struggle to achieve. There is also much giving in any year in kind....baked goods, meals, food bank donations, cleaning and supplies, maintenance and care-taking, grass-cutting and gardening, church flowers. Income from the Fayre contributes to the finances of both Hall and Church, as do the concerts, music workshops, rehearsals, dances, craft fairs, and other events. Some of the charities we



support are: Manna House (supporting homeless people in Kendal); Springfield Refuge for women; The Church Army; CMS; NISCU South Lakeland; Water Aid; Toilet Twinning; Christian Aid and The Children's Society. In 2022 alone three musical events in the church have raised over £3500 for DEC Ukraine and £400 for a children's cancer charity.

## BUILDING

Ings has had a place of worship at least since 1511. A chapel on the present site of the church may have been built about 1616. In the 1650's Ings-born Rowland Wilson was a major benefactor of St Anne's and the school that is now the Parish Hall. The church in its present form was largely the generous project of another local boy Robert Bateman, in the 1740s.

During the 20th century the church building saw little change apart from restoration of the organ and removal of choir stalls. The school closed in 1972 and then reopened in October 1979 as Ings Parish Hall. The church was redecorated inside and out in 2009 to a scheme suggested by the National Trust in keeping with what may have been the original style. It has a Grade 2\* listing.



The Church is in good order after major refurbishments over the last decade. Our reordering project, completed in late Autumn 2012, was planned to create a versatile space suitable for concerts, activities, community meetings, rehearsals, dancing and much more. The unremarkable Victorian pews were sold and replaced by a careful choice of chairs, and the floor was replaced, with underfloor heating from an air-source heat pump. Sustainability inside the building includes high levels of thermal insulation, secondary glazing and draught exclusion, and the churchyard is managed as a wildflower meadow. The vestry in the north 'organ chamber' doubles as a simple kitchen. Specialist work on the bells and the tower in 2020 has ensured that the fabric of the building is sound throughout. We now have a completely refurbished and warm church, with access and a floor on one level, and comfortable, moveable seating, which with the accessible toilet extension added in 2019 means that we have a independently hireable building. It can now meet demands for space that the Parish Hall cannot provide, while maintaining the character of the building, and safeguarding its role as a Church.

## 6.6 - ST. CUTHBERT'S, KENTMERE

### STATEMENT OF ASSETS AND LIABILITIES AT 31st DECEMBER 2021

## FINANCES

	General Fund	Designated Fund (Property & Grounds)	Church Heritage Project (Completed)	Total Funds	Total Funds
	(Unrestricted)	(Unrestricted)	(Restricted)	2021	2020
	£	£	£	£	£
Cash and Bank Deposits					
Cash in hand	211			211	28
Cash at bank - current accounts					
Cumberland Buildings Society	3,662			3,662	2,892
Barclays Bank	0			0	0
Deposit accounts					
Central Board of Finance	36,750			36,750	36,730
	<u>40,623</u>	<u>0</u>	<u>0</u>	<u>40,623</u>	<u>39,650</u>
Debtors					
Parochial church fees	272	-	-	272	-
	<u>272</u>	<u>-</u>	<u>-</u>	<u>272</u>	<u>-</u>
Liabilities - unpaid expenses					
Fire protection service	-	-	-	-	85
Parochial fees due to Diocese	-	-	-	-	13
Electricity	35	-	-	35	44
Benefice joint expenses	113	-	-	113	-
Children's Society	150	-	-	150	-
	<u>298</u>	<u>-</u>	<u>-</u>	<u>298</u>	<u>142</u>

The P.C.C. is grateful to our organist and others who have waived their fees in favour of church funds

**ST CUTHBERT'S CHURCH, KENTMERE**  
**FINANCIAL STATEMENTS FOR THE YEAR ENDED 31st DECEMBER 2021**  
**RECEIPTS AND PAYMENTS ACCOUNT**

	General Fund	Designated Fund (Property & Grounds)	Church Heritage Project	Total	Total
	(Unrestricted)	(Unrestricted)	(Restricted)	2021	2020
	£	£	£	£	£
<b>RECEIPTS</b>					
Voluntary receipts:					
Planned giving under gift aid	5,934			5,934	6,187
Collections at services	366			366	80
Other voluntary giving	538			538	1,747
Legacies				0	500
Kentmere Parish Precept		435		435	435
Designated donations		870		870	100
Friends scheme		25		25	25
Gift Aid recovered	1,729	0		1,729	2,828
	8,567	1,330	0	9,897	11,902
Income from Grants					
Listed Place of Worship Scheme VAT grants	1,019			1,019	
Income from church activities					
Fees	623			623	1,493
Magazine subscriptions	5			5	178
	628				
Activities for generating funds					
Income from events	216			216	0
Other miscellaneous income	45			45	197
	261				
Income from investments					
Interest received	22	0		22	167
<b>TOTAL RECEIPTS</b>	<b>10,497</b>	<b>1,330</b>	<b>0</b>	<b>11,827</b>	<b>13,937</b>
<b>PAYMENTS</b>					
Costs of generating income					
Fund raising activities	62			62	0
Amounts to further the work of the Church					
Donations and Parish welfare	376			376	300
Church running costs					
Parish offering	5,040			5,040	6,420
Benefice joint expenses	189			189	595
Insurance	981			981	955
Electricity	326			326	502
General repairs	1,904			1,904	1,487
Churchyard maintenance	0	572		572	440
Sundry expenses	469			469	262
Major repairs & improvements	177	758		935	6,114
Heritage project	0		0	0	6,473
	9,086				
<b>TOTAL PAYMENTS</b>	<b>9,524</b>	<b>1,330</b>	<b>0</b>	<b>10,854</b>	<b>23,548</b>
Surplus/(Deficit) of receipts over payments	973	0	0	973	(9,611)
Add: Cash & bank deposits at 31st December 2020	39,650	0	0	39,650	49,261
Cash & bank deposits at 31st December 2021 as per Statement of Assets & Liabilities	40,623	0	0	40,623	39,650

## BUILDING



The ancient yew in the circular churchyard signifies a very early religious settlement and the present church built at the beginning of the 16th century may have replaced a previous one on the same site. The church has links with Bernard Gilpin, the “Apostle of the North”, who was born at Kentmere Hall in 1517. A sketch by Thomas Machell in the 1690s depicts a building of the same size and with the same features as the present building – although the tower was raised in the 1860s. No significant changes have been made in the last 100 years except the installation of electricity in 1963. By the early part of this century it became clear that the roof structure was showing signs of decay and in 2016 the roof was repaired and refurbished at a cost of £250,000. This was funded by a grant of £110,000 from the National Heritage Memorial Fund, £10,000 from the National Churches Trust and donations from other charitable organisations, businesses and private individuals. The project was awarded a Highly Commended certificate for building conservation by the Royal Institute of Chartered Surveyors.

It is a very special building which is carefully, lovingly and sensitively maintained and currently houses a splendid ‘sharing heritage’ exhibition of the history and development of the community and its church since Viking times. The churchyard is maintained as a conservation area.

## 7 - THE VICARAGE



The house is situated in Staveley next to the church on Kentmere Road. Built in the late 1970s it is a modern building on a sloping site with a large garden mainly to grass with fruit trees, shrubs, and a large rockery.

### Ground floor

Here there is an entrance porch, hallway, study, and toilet with hand basin. The attached large garage can be accessed from the hall and contains the gas boiler.

### First floor

There is a large lounge with a gas fire and surround, large windows on two sides, a dining room with sliding patio doors and a hatch linked to a spacious kitchen, with floor and wall units, a sink and space for a cooker and fridge.

A good-sized utility room leading from the kitchen has a sink and space for a washing machine and tumble dryer and a door leading into the back garden.

### Second floor

This has a landing area with a desk.

A corridor leads to 4 double bedrooms, 3 with built in wardrobes, a bathroom with a shower over the bath, a shower room, and an airing cupboard with a hot water cylinder and a hatch into the loft space.

The house has full gas central heating and the main living rooms, stairs and bedrooms are carpeted.





**Follow Daily**  
**Care Deeply**  
**Speak Boldly**  
**Tread Gently**

#### **GOD FOR ALL**

- [Mission Communities](#)
- [Resources for Mission](#)

#### **ECUMENICAL PARTNERS**

- [www.cumbriamethodistdistrict.org.uk](http://www.cumbriamethodistdistrict.org.uk)
- [www.carlisediocese.org.uk](http://www.carlisediocese.org.uk)
- [www.salvationarmy.org.uk](http://www.salvationarmy.org.uk)
- [www.nwsynod.org.uk](http://www.nwsynod.org.uk)